

Rev03
Update: Aug,08,2025**DATASHEET**

Diaphanous homolog 1 Antibody, mAb, Rabbit

Cat. No.: A04878

Overview

Specificity	This product is specific to Diaphanous homolog 1
Host Species	Rabbit
Immunogen	A synthesized peptide derived from human Diaphanous homolog 1
Species Reactivity	Human; Mouse; Rat
Conjugate	Unconjugated

Applications

Working concentrations for specific applications should be determined by the investigators. The appropriate concentrations may be affected by secondary antibody affinity, antigen concentration, the sensitivity of the method of detection, temperature, the length of the incubations, and other factors. The suitability of this antibody for applications other than those listed below has not been determined. The following concentration ranges are recommended starting points for this product.

Application	Recommended Usage
Western Blot	1:1000-1:2000
Immunohistochemistry (IHC)	1:100-1:200
Immunocytochemistry/Immunofluorescence (ICC/IF)	1:50-1:200
Immunohistochemistry Frozen (IHF)	1:50-1:200

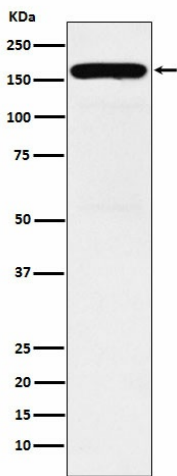
Properties

Form	Liquid
Storage Buffer	Supplied in 10mM phosphate buffered saline , pH 7.4, 150mM sodium chloride, 0.05% BSA, 0.02% sodium azide and 50% glycerol.
Storage Instructions	Store at -20°C. This product is stable for 1 year upon receipt, when handled and stored as instructed.
Purification	Affinity-chromatography
Isotype	Rabbit IgG

Clonality

Monoclonal

Examples



Western blot analysis of DIAPH1 expression in K562 cell lysate.

Background

Target Background : Actin nucleation and elongation factor required for the assembly of F-actin structures, such as actin cables and stress fibers. Binds to the barbed end of the actin filament and slows down actin polymerization and depolymerization.

Synonyms : DIAPH1; DFNA1; DIA1; DIAP1; DIAPH1; DRF1; hDIA1; LFHL1;

For research use only. Not intended for human or animal clinical trials, therapeutic or diagnostic use.

Manufacturer: Nanjing GenScript Biotech Co., Ltd. No. 28Yongxi Road, Jiangning District, Nanjing, Jiangsu, China