

Rev02
Update: Jan,06,2025

DATASHEET

MonoRab™ Anti-Evolocumab Antibody (36A11), mAb, Rabbit

Cat. No.: A02294

Overview

Specificity	This product is specific for Evolocumab.
Host Species	Rabbit
Immunogen	Evolocumab
Conjugate	Unconjugated

Applications

Working concentrations for specific applications should be determined by the investigators. The appropriate concentrations may be affected by secondary antibody affinity, antigen concentration, the sensitivity of the method of detection, temperature, the length of the incubations, and other factors. The suitability of this antibody for applications other than those listed below has not been determined. The following concentration ranges are recommended starting points for this product.

Application	Recommended Usage
Sandwich ELISA	0.5-2 µg/ml
ELISA	0.01-1 µg/ml
Competitive ELISA	1-10 µg/ml

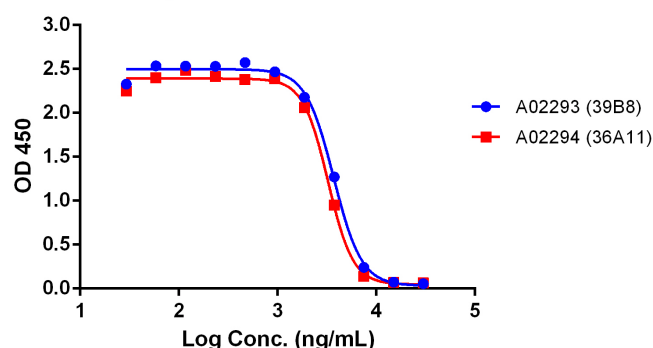
Properties

Form	Lyophilized
Storage Buffer	Lyophilized with PBS, pH 7.2, containing 0.02% sodium azide.
Reconstitution	Reconstitute the lyophilized antibody with deionized water (or equivalent) to a final concentration of 0.5 mg/mL.
Storage Instructions	The lyophilized product remains stable for up to 1 year at -20 °C from the date of receipt. Upon reconstitution, it can be stored for 2-3 weeks at 2-8 °C or for up to 12 months at -20 °C or below. Avoid repeated freezing and thawing cycles.

Purification	Protein A affinity column
Isotype	Rabbit IgG, κ
Clonality	Monoclonal
Clone ID	36A11
Note	GenScript can customize this product per customer's request including product size, buffer components, etc.

Examples

Anti-Evolocumab Antibody (39B8) or (36A11) inhibits the binding of Evolocumab to Evolocumab



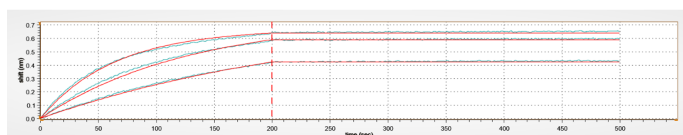
Anti-Evolocumab Antibody (39B8) or (36A11) inhibits the binding of Evolocumab to PCSK. Coating antigen: Evolocumab, 1 μ g/mL.

Human PCSK final concentration: 30 ng/mL.

Anti-Evolocumab antibody dilutions start from 30 μ g/mL.

MonoRab™ Anti-Evolocumab Antibody (39B8), mAb, Rabbit (GenScript, A02293) demonstrated inhibitory properties with an IC_{50} value of 0.37 μ g/ml and MonoRab™ Anti-Evolocumab Antibody (36A11), mAb, Rabbit (GenScript, A02294) demonstrated inhibitory properties with an IC_{50} value of 0.32 μ g/ml

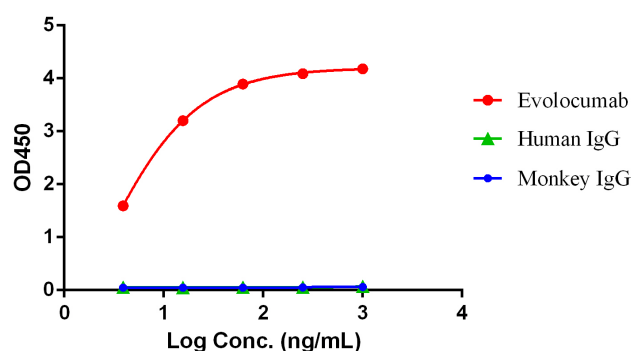
Binding affinity measurements of MonoRab™ Anti-Evolocumab Antibody (36A11), mAb, Rabbit to Evolocumab



BLI (Biolayer interferometry) binding affinity measurements of MonoRab™ Anti-Evolocumab Antibody (36A11), mAb, Rabbit (GenScript, A02294) to Evolocumab.

Evolocumab captured on HFC (Anti-Human IgG Fc) Probes can bind MonoRab™ Anti-Evolocumab Antibody (36A11), mAb, Rabbit with a dissociation constant (KD) of less than 1 pM.

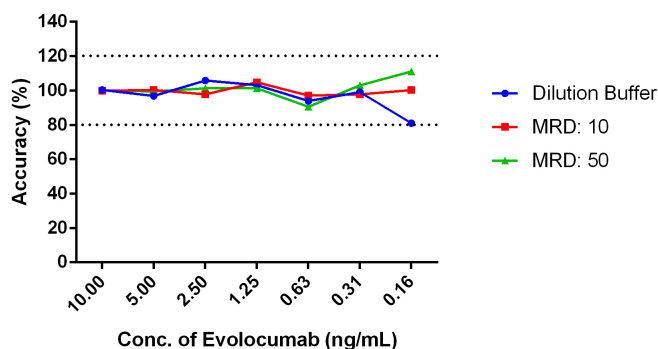
Anti-Evolocumab Antibody (36A11) binds with Evolocumab, Human IgG, and Monkey IgG



ELISA binding of MonoRab™ Anti-Evolocumab Antibody (36A11), mAb, Rabbit (GenScript, A02294) with Evolocumab, Human IgG, and Monkey IgG.

In this ELISA assay, Human IgG and monkey IgG were coated on the plates at a concentration of 4 μ g/mL, respectively. Evolocumab were coated on plates at a concentration of 1 μ g/mL. MonoRab™ Anti-Evolocumab Antibody (36A11), mAb, Rabbit (GenScript, A02294) dilution start from 1 μ g/mL.

MRD Analysis of the Detection of Evolocumab in Biological Matrix

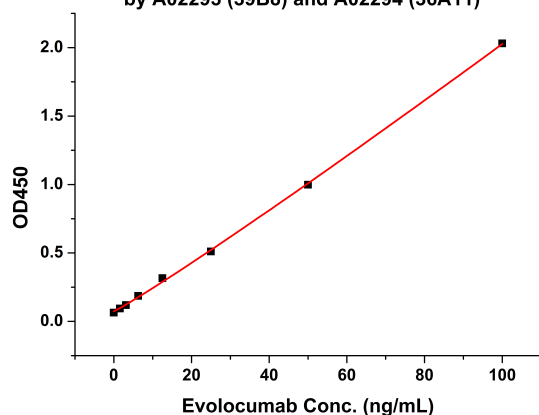


MRD Analysis of the Detection of Evolocumab in Biological Matrix.

The MRD is the minimum dilution necessary for the detection of Evolocumab in biological matrix with least interference. Samples configured with 100% FBS (Fetal Bovine Serum) were serially diluted to determine the MRD of the assay, and the test result suggested that MRD was as 1:10.

In this ELISA assay, MonoRab™ Anti-Evolocumab Antibody (39B8), mAb, Rabbit (GenScript, A02293) was coated at a concentration of 1 µg/ml, and MonoRab™ Anti-Evolocumab Antibody (36A11), mAb, Rabbit (GenScript, A02294) conjugated with Biotin was used as a detection antibody at a concentration of 0.5 µg/mL.

Standard Curve of Evolocumab Sandwich ELISA by A02293 (39B8) and A02294 (36A11)



Standard Curve of Evolocumab Sandwich ELISA by A02293 (39B8) and A02294 (36A11)

In this Sandwich ELISA assay, MonoRab™ Anti-Evolocumab Antibody (39B8), mAb, Rabbit (GenScript, A02293) was coated at a concentration of 1 µg/ml, and MonoRab™ Anti-Evolocumab Antibody (36A11), mAb, Rabbit (GenScript, A02294) conjugated with Biotin was used as a detection antibody at a concentration of 0.5 µg/mL. GenScript can provide customized conjugation service for this product per customer's request.

In this assay, a four-parameter logistic curve fitting program was used to create a standard curve with the R-Square equal to 0.99934. The typical dynamic range of the assay is 1.56 - 100 ng/mL.

Background

Target Background : Evolocumab, also known as Repatha, is a monoclonal antibody used to treat hyperlipidemia through immunotherapy. This fully human monoclonal antibody works by blocking the activity of PCSK9, a protein responsible for breaking down LDL receptors. By inhibiting PCSK9, Repatha enhances the liver's capacity to remove LDL-C, commonly referred to as "bad" cholesterol, from the bloodstream. Evolocumab is the second PCSK9 inhibitor on the market, first being alirocumab.

Synonyms : Evolocumab; Repatha; AMG 145; PCSK9 Inhibitor; AMG-145; GTPL7343

For laboratory research use only. Direct human use, including taking orally and injection and clinical use are forbidden.

Manufacturer: Nanjing GenScript Biotech Co., Ltd. No. 28Yongxi Road, Jiangning District, Nanjing, Jiangsu, China