

Rev01  
Update: Sep,25,2023**DATASHEET**

# Anti-Zolbetuximab Antibody (9C9), mAb, Mouse

Cat. No.: A02261

## Overview

<b>Specificity</b>	This product is specific for Zolbetuximab.
<b>Host Species</b>	Mouse
<b>Immunogen</b>	Zolbetuximab
<b>Conjugate</b>	Unconjugated

## Applications

Working concentrations for specific applications should be determined by the investigators. The appropriate concentrations may be affected by secondary antibody affinity, antigen concentration, the sensitivity of the method of detection, temperature, the length of the incubations, and other factors. The suitability of this antibody for applications other than those listed below has not been determined. The following concentration ranges are recommended starting points for this product.

<b>Application</b>	<b>Recommended Usage</b>
Sandwich ELISA	0.5-2 µg/ml
ELISA	0.01-1 µg/ml
Competitive ELISA	1-10 µg/ml

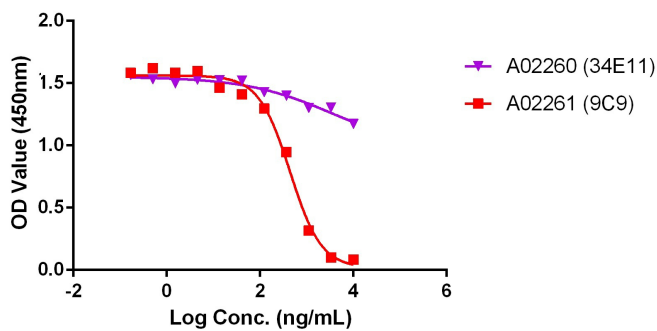
## Properties

<b>Form</b>	Lyophilized
<b>Storage Buffer</b>	Lyophilized with PBS, pH 7.2, containing 0.02% sodium azide.
<b>Reconstitution</b>	Reconstitute the lyophilized antibody with deionized water (or equivalent) to a final concentration of 0.5 mg/mL.
<b>Storage Instructions</b>	The lyophilized product remains stable for up to 1 year at -20 °C from the date of receipt. Upon reconstitution, it can be stored for 2-3 weeks at 2-8 °C or for up to 12 months at -20 °C or below. Avoid repeated freezing and thawing cycles.
<b>Purification</b>	Protein A affinity column

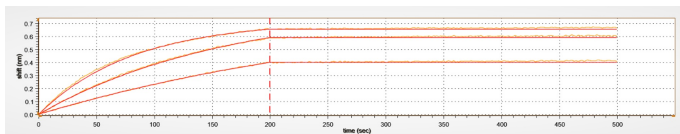
<b>Isotype</b>	Mouse IgG1, $\kappa$
<b>Clonality</b>	Monoclonal
<b>Clone ID</b>	9C9G2
<b>Note</b>	GenScript can customize this product per customer's request including product size, buffer components, etc.

## Examples

**Anti-Zolbetuximab Antibody (34E11) or (9C9) inhibits the binding of Zolbetuximab to CLDN18.2**

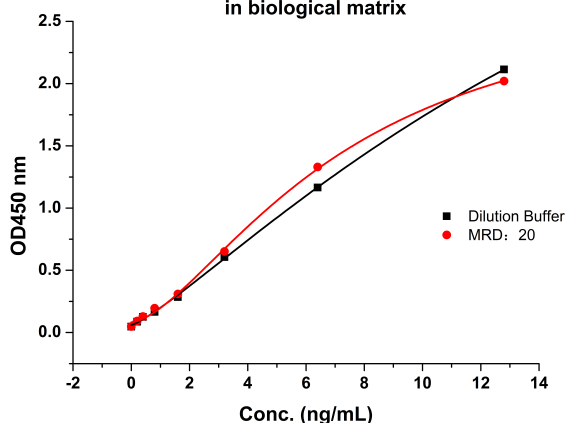


Anti-Zolbetuximab Antibody (34E11) or (9C9) inhibits the binding of Zolbetuximab to Claudin18.2 (CLDN18.2). Coating antigen: Zolbetuximab 1  $\mu\text{g/ml}$ . Claudin18.2 (GenScript, Z03504) final concentration: 1.2  $\mu\text{g/ml}$ . Anti-Zolbetuximab antibody dilutions start from 10  $\mu\text{g/ml}$ . Anti-Zolbetuximab Antibody (34E11), mAb, Mouse (GenScript, A02260) exhibited non-inhibitory properties, whereas Anti-Zolbetuximab Antibody (9C9), mAb, Mouse (GenScript, A02261) demonstrated significant inhibitory properties with an  $\text{IC}_{50}$  value of 0.44  $\mu\text{g/ml}$ .



BLI (Biolayer interferometry) binding affinity measurements of Anti-Zolbetuximab Antibody (9C9), mAb, Mouse (GenScript, A02261) to Zolbetuximab. Zolbetuximab captured on HFC (Anti-Human IgG Fc) Probes can bind Anti-Zolbetuximab Antibody (9C9), mAb, Mouse with a dissociation constant (KD) of less than 1 pM.

**MRD analysis of the detection of Zolbetuximab in biological matrix**

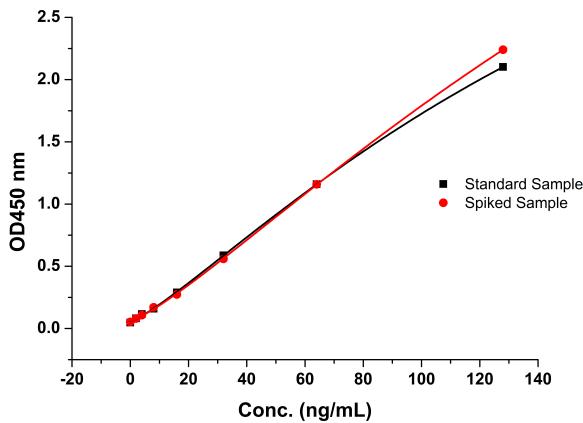


MRD analysis of the detection of Zolbetuximab in biological matrix.

The MRD is the minimum dilution necessary for the detection of Zolbetuximab in biological matrix with least interference. Serum samples from cynomolgus monkey were serially diluted to determine the MRD of this assay, and the test result suggested that MRD was as 1:20.

In this ELISA assay, Anti-Zolbetuximab Antibody (34E11), mAb, Mouse (GenScript, A02260) was coated at a concentration of 1  $\mu\text{g/ml}$ , and Anti-Zolbetuximab Antibody (9C9), mAb, Mouse (GenScript, A02261) conjugated with Biotin was used as a detection antibody at a concentration of 0.5  $\mu\text{g/ml}$ .

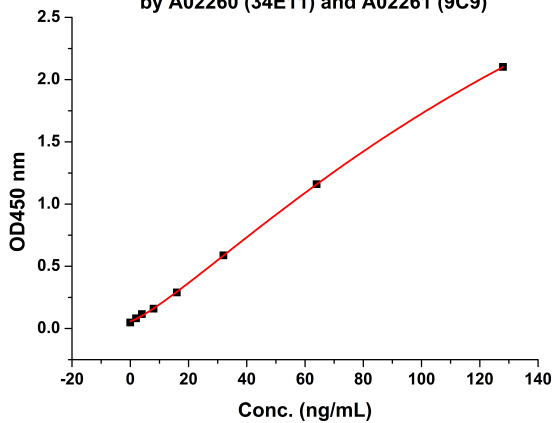
Specificity analysis of the detection of Zolbetuximab



Specificity analysis of the detection of Zolbetuximab.

Zolbetuximab standard samples at 8 concentrations were spiked with 2 µg/mL of human IgG1. The test result demonstrated that the high concentration of human IgG1 did not interfere with the detection of Zolbetuximab. In this ELISA assay, Anti-Zolbetuximab Antibody (34E11), mAb, Mouse (GenScript, A02260) was coated at a concentration of 1 µg/ml, and Anti-Zolbetuximab Antibody (9C9), mAb, Mouse (GenScript, A02261) conjugated with Biotin was used as a detection antibody at a concentration of 0.5 µg/ml.

Standard curve of Zolbetuximab sandwich ELISA by A02260 (34E11) and A02261 (9C9)



Standard curve of Zolbetuximab sandwich ELISA by A02260 (34E11) and A02261 (9C9).

In this ELISA assay, Anti-Zolbetuximab Antibody (34E11), mAb, Mouse (GenScript, A02260) was coated at a concentration of 1 µg/ml, and Anti-Zolbetuximab Antibody (9C9), mAb, Mouse (GenScript, A02261) conjugated with Biotin was used as a detection antibody at a concentration of 0.5 µg/ml.

In this ELISA assay, a four-parameter logistic curve fitting program was used to create a standard curve with the R-Square equal to 0.99984. The typical dynamic range of the assay is 2-128 ng/mL and its sensitivity of detecting Zolbetuximab is up to 2 ng/ml.

## Background

**Target Background :** Zolbetuximab, also known by its development code IMAB362, is a novel monoclonal antibody targeting Claudin-18 isoform 2 (Claudin-18.2). Currently, it is being studied for its potential in treating gastrointestinal adenocarcinomas and pancreatic tumors.

**Synonyms :** Zolbetuximab; claudiximab; GC-182; IMAB-362; IMAB362; Claudin-18.2 Inhibitor; anti-human Claudin-18.2; anti-Claudin18.2 antibody; anti-CLDN18 antibody, anti-SFTA5 antibody, anti-SFTPJ antibody

**For laboratory research use only. Direct human use, including taking orally and injection and clinical use are forbidden.**

生产商：南京金斯瑞生物科技有限公司 江苏省南京市江宁区科学园雍熙路28号

Manufacturer: Nanjing GenScript Biotech Co., Ltd. No. 28 Yongxi Road, Jiangning District, Nanjing, Jiangsu, China