

# Anti-Panitumumab Antibody (2E7), mAb, Mouse

Cat. No.: A02099

## Overview

<b>Specificity</b>	The product is specific for Panitumumab
<b>Host Species</b>	Mouse
<b>Immunogen</b>	Panitumumab
<b>Conjugate</b>	Unconjugated

## Applications

Working concentrations for specific applications should be determined by the investigators. The appropriate concentrations may be affected by secondary antibody affinity, antigen concentration, the sensitivity of the method of detection, temperature, the length of the incubations, and other factors. The suitability of this antibody for applications other than those listed below has not been determined. The following concentration ranges are recommended starting points for this product.

<b>Application</b>	<b>Recommended Usage</b>
ELISA	0.005-1 µg/ml
Competitive ELISA	1-30 µg/ml

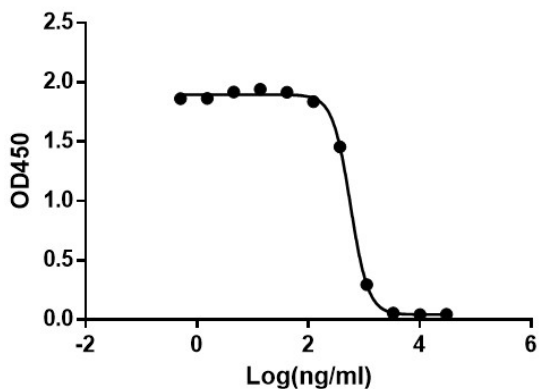
## Properties

<b>Form</b>	Lyophilized
<b>Storage Buffer</b>	This product is lyophilized with PBS, pH 7.2, containing 0.02% sodium azide.
<b>Reconstitution</b>	Reconstitute the lyophilized powder with deionized water (or equivalent) to a final concentration of 0.5 mg/ml.
<b>Storage Instructions</b>	The lyophilized product remains stable up to 1 year at -20 °C from date of receipt. Upon reconstitution, it can be stored for 2-3 weeks at 2-8 °C or for up to 12 months at -20 °C or below. Avoid repeated freezing and thawing cycles.
<b>Purification</b>	Protein A affinity column
<b>Isotype</b>	Mouse IgG1, $\kappa$

<b>Clonality</b>	Monoclonal
<b>Clone ID</b>	2E7
<b>Note</b>	GenScript can customize this product per customer's request including product size, buffer components, etc.

## Examples

**Anti-Panitumumab Antibody (2E7) blocks Panitumumab binding with Human EGFR**



Anti-Panitumumab Antibody (2E7) (GenScript, A02099-40) blocks Panitumumab binding with Human EGFR recombinant protein.

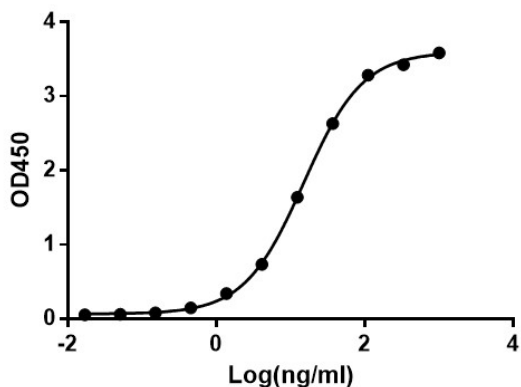
Coating antigen: Panitumumab 1 µg/ml.

EGFR final concentration: 250 ng/ml.

Anti-Panitumumab antibody dilutions start from 30 µg/ml.

IC<sub>50</sub>= 0.567 µg/ml.

**Anti-Panitumumab Antibody (2E7) binds with Panitumumab**

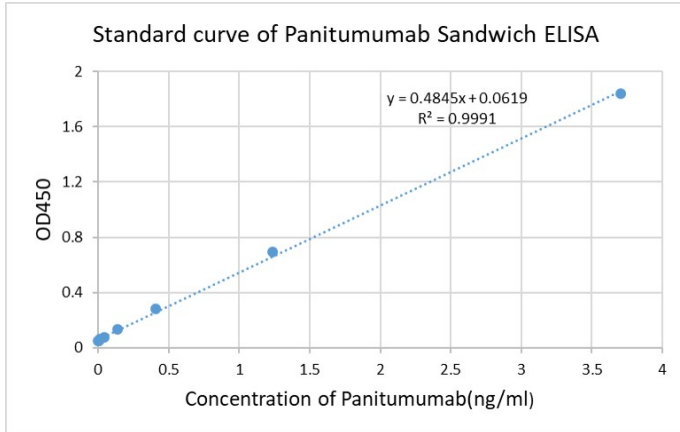


ELISA binding of Anti-Panitumumab Antibody (2E7), mAb, Mouse (GenScript, A02099-40) with Panitumumab. While the antibody does not recognize the human IgG (data not shown).

Coating antigen: Panitumumab, 1 µg/ml.

Anti-Panitumumab Antibody (2E7), mAb, Mouse (GenScript, A02099-40) dilution start from 1,000 ng/ml.

EC<sub>50</sub>= 15.05 ng/ml.



Standard curve of Panitumumab Sandwich ELISA. The Panitumumab Sandwich ELISA assay is developed by using Anti-Panitumumab Antibody (9G12), mAb, Mouse (GenScript, A02100-40) and Anti-Panitumumab Antibody (2E7), mAb, Mouse (GenScript, A02099-40) as the capture and detection antibodies, respectively.

In this ELISA assay, Anti-Panitumumab Antibody (2E7), mAb, Mouse (GenScript, A02099-40) was labeled with Biotin.

GenScript can provide customized conjugation services for this product per the customer's request.

The sensitivity of detecting Panitumumab is up to 0.09 ng/ml.

## Background

**Target Background :** Panitumumab with trade name Vectibix, is an FDA-approved drug for the treatment of patients with EGFR-expressing metastatic colorectal carcinoma with non-mutated (wild-type) KRAS after failure of fluoropyrimidine-, oxaliplatin- and irinotecan-containing chemotherapy regimens. It is a human monoclonal antibody. Panitumumab binds to the human EGF receptor (EGFR), preventing binding of activating ligands, such as the EGF and transforming growth factor- $\alpha$ . Anti-Panitumumab Antibody (2E7), mAb, Mouse is produced from a hybridoma resulting from the fusion of partner and B-lymphocytes obtained from a mouse immunized with Panitumumab.

**Synonyms :** Mouse monoclonal to Panitumumab/Vectibix

**For laboratory research use only. Direct human use, including taking orally and injection and clinical use are forbidden.**

生产商：南京金斯瑞生物科技有限公司 江苏省南京市江宁区科学园雍熙路28号

Manufacturer: Nanjing GenScript Biotech Co., Ltd. No. 28Yongxi Road, Jiangning District, Nanjing, Jiangsu, China