

Rev04
Update: Oct,19,2022**DATASHEET**

Anti-Infliximab Antibody, pAb, Rabbit

Cat. No.: A02061

Overview

Specificity	The product is specific for infliximab
Host Species	Rabbit
Immunogen	Infliximab
Conjugate	Unconjugated

Applications

Working concentrations for specific applications should be determined by the investigators. The appropriate concentrations may be affected by secondary antibody affinity, antigen concentration, the sensitivity of the method of detection, temperature, the length of the incubations, and other factors. The suitability of this antibody for applications other than those listed below has not been determined. The following concentration ranges are recommended starting points for this product.

Application	Recommended Usage
ELISA	0.001-0.1 µg/ml

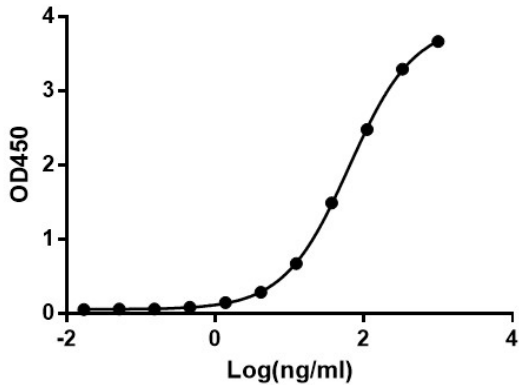
Properties

Form	Lyophilized
Storage Buffer	This product is lyophilized with PBS, pH 7.2, containing 0.02% sodium azide.
Reconstitution	Reconstitute the lyophilized powder with deionized water (or equivalent) to a final concentration of 0.5 mg/ml.
Storage Instructions	The lyophilized product remains stable up to 1 year at -20 °C from date of receipt. Upon reconstitution, it can be stored for 2-3 weeks at 2-8 °C or for up to 12 months at -20 °C or below. Avoid repeated freezing and thawing cycles.
Purification	Antigen affinity purification
Isotype	Rabbit IgG
Clonality	Polyclonal

Note GenScript can customize this product per customer's request including product size, buffer components, etc.

Examples

Anti-Infliximab Antibody, pAb, Rabbit binds with Infliximab



ELISA binding of Anti-Infliximab Antibody, pAb, Rabbit (GenScript, A02061-40) with Infliximab.

Coating antigen: Infliximab, 1 μ g/ml.

Anti-Infliximab Antibody, pAb, Rabbit (GenScript, A02061-40) dilution start from 1,000 ng/ml.

EC_{50} = 63.8 ng/ml.

Background

Target Background : Infliximab with the brand name of Remicade, is a chimeric monoclonal IgG1 antibody. It binds to TNF- α , which is a key proinflammatory cytokine involved in chronic inflammatory diseases. Infliximab functions as TNF- α blocker to disrupt the interaction of TNF- α with its receptors. GenScript Anti-Infliximab Antibody, pAb, Rabbit is produced from sera of a rabbit immunized with Infliximab.

Synonyms : Rabbit polyclonal to Infliximab/Remicade

For laboratory research use only. Direct human use, including taking orally and injection and clinical use are forbidden.