

Rev05
Update: Jun,14,2023**DATASHEET**

Anti-Ranibizumab Antibody (6C3), mAb, Mouse

Cat. No.: A02035

Overview

Specificity	The product is specific for Ranibizumab. The antibody is recommended as a capture antibody in a pharmacokinetic (PK) bridging assay with detection antibody GenScript, A02036-40, Anti-Ranibizumab Antibody (10D12), mAb, Mouse.
Host Species	Mouse
Immunogen	Ranibizumab
Conjugate	Unconjugated

Applications

Working concentrations for specific applications should be determined by the investigators. The appropriate concentrations may be affected by secondary antibody affinity, antigen concentration, the sensitivity of the method of detection, temperature, the length of the incubations, and other factors. The suitability of this antibody for applications other than those listed below has not been determined. The following concentration ranges are recommended starting points for this product.

Application	Recommended Usage
ELISA	0.01-0.1 µg/ml

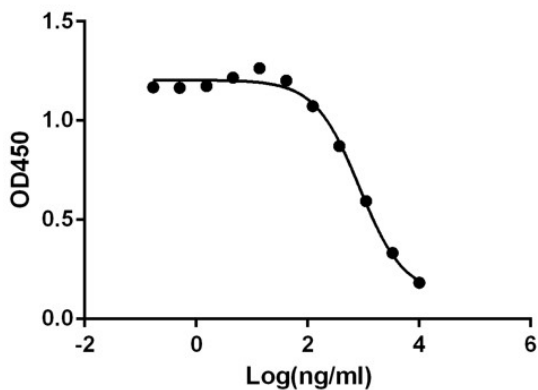
Properties

Form	Lyophilized
Storage Buffer	Lyophilized with PBS, pH 7.4, containing 0.02% sodium azide.
Reconstitution	Reconstitute the lyophilized powder with deionized water (or equivalent) to a final concentration of 0.5 mg/ml.
Storage Instructions	The lyophilized product remains stable up to 1 year at -20 °C from date of receipt. Upon reconstitution, it can be stored for 2-3 weeks at 2-8 °C or for up to 12 months at -20 °C or below. Avoid repeated freezing and thawing cycles.
Purification	Protein A affinity column
Isotype	Mouse IgG1,λ

Clonality	Monoclonal
Clone ID	6C3
Note	GenScript can customize this product per customer's request including product size, buffer components, etc.

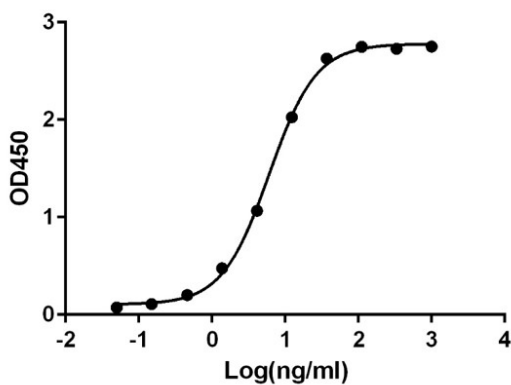
Examples

Anti-Ranibizumab Antibody(6C3) blocks Ranibizumab binding with VEGF165



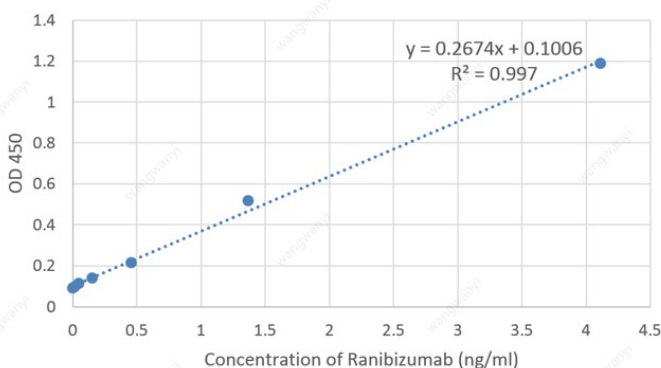
Anti-Ranibizumab Antibody (6C3), mAb, Mouse (GenScript, A02035-40) blocks Ranibizumab binding with VEGF165 (GenScript, Z03073)
 Coating antigen: VEGF165 1 µg/ml
 Ranibizumab final concentration: 100 ng/ml.
 Anti-Ranibizumab antibody dilution start from 10 µg/ml
 $IC_{50} = 0.848 \mu\text{g/ml}$

Anti-Ranibizumab Antibody(6C3) binds with Ranibizumab



ELISA binding of Anti-Ranibizumab Antibody (6C3), mAb, Mouse (GenScript, A02035-40) with Ranibizumab. While the antibody does not recognize the human IgG (data not shown).
 Coating antigen: Ranibizumab, 1 µg/ml.
 Anti-Ranibizumab Antibody (6C3), mAb, Mouse (GenScript, A02035-40) dilution start from 1,000 ng/ml.
 $EC_{50} = 6.043 \text{ ng/ml}$

Standard curve of Ranibizumab Sandwich ELISA



Standard curve of Ranibizumab Sandwich ELISA. The Ranibizumab Sandwich ELISA assay is developed by using Anti-Ranibizumab Antibody (6C3), mAb, Mouse (GenScript, A02035-40) and Anti-Ranibizumab Antibody (10D12), mAb, Mouse (GenScript, A02036-40) as the capture and detection antibodies, respectively.
 In this ELISA assay, Anti-Ranibizumab Antibody (10D12), mAb, Mouse (GenScript, A02036-40) was labeled with Biotin.
 GenScript can provide customized conjugation services for this product per the customer's request.

The sensitivity of detecting Ranibizumab is up to 0.05 ng/ml.

Background

Target Background : Ranibizumab with trade name Lucentis, is an FDA-approved drug for the treatment of patients with neovascular (Wet) age-related macular degeneration (AMD) and macular edema following retinal vein occlusion (RVO). It is a recombinant humanized IgG1 kappa isotype monoclonal antibody fragment. Ranibizumab binds to vascular endothelial growth factor A (VEGF-A) and blocks its activity. Anti-Ranibizumab Antibody (6C3), mAb, Mouse is produced from a hybridoma resulting from the fusion of partner and B-lymphocytes obtained from a mouse immunized with Ranibizumab.

Synonyms : Mouse monoclonal to Lucentis

For laboratory research use only. Direct human use, including taking orally and injection and clinical use are forbidden.

生产商：南京金斯瑞生物科技有限公司 江苏省南京市江宁区科学园雍熙路28号

Manufacturer: Nanjing GenScript Biotech Co., Ltd. No. 28Yongxi Road, Jiangning District, Nanjing, Jiangsu, China