

Rev04  
Update: Oct,19,2022

## DATASHEET

# MonoRab™ Human PD-L1 Antibody (X228), mAb, Rabbit

Cat. No.: A02012

## Overview

<b>Specificity</b>	The product is specific for human PD-L1
<b>Host Species</b>	Rabbit
<b>Immunogen</b>	Carrier protein –coupled synthetic peptide within C-terminus of human PD-L1
<b>Species Reactivity</b>	Not applicable
<b>Conjugate</b>	Unconjugated

## Applications

Working concentrations for specific applications should be determined by the investigators. The appropriate concentrations may be affected by secondary antibody affinity, antigen concentration, the sensitivity of the method of detection, temperature, the length of the incubations, and other factors. The suitability of this antibody for applications other than those listed below has not been determined. The following concentration ranges are recommended starting points for this product.

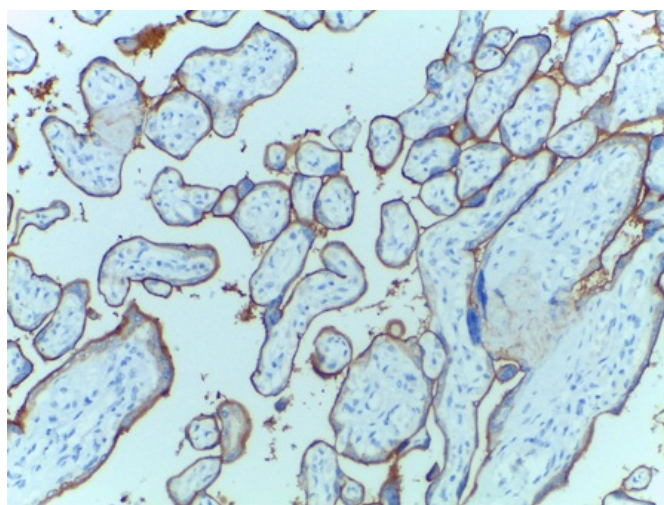
<b>Application</b>	<b>Recommended Usage</b>
Immunohistochemistry (IHC)	1-5 µg/ml

## Properties

<b>Form</b>	Lyophilized
<b>Storage Buffer</b>	Lyophilized with PBS, pH 7.4, containing 0.02% sodium azide.
<b>Reconstitution</b>	Reconstitute the lyophilized powder with deionized water (or equivalent) to a final concentration of 0.5 mg/ml.
<b>Storage Instructions</b>	The lyophilized product remains stable up to 1 year at -20 °C from date of receipt. Upon reconstitution, it can be stored for 2-3 weeks at 2-8 °C or for up to 12 months at -20 °C or below. Avoid repeated freezing and thawing cycles.
<b>Purification</b>	Protein A or G affinity column

<b>Isotype</b>	Rabbit IgG
<b>Clonality</b>	Monoclonal
<b>Clone ID</b>	X228
<b>Note</b>	GenScript can customize this product per customer's request including product size, buffer components, etc.

## Examples



Immunohistochemistry analysis of human placenta tissue slide (Paraffin embedded) using MonoRab™ Human PD-L1 Antibody (X228), mAb, Rabbit (GenScript, Cat. No. A02012-40).

## Background

**Target Background :** Programmed cell death 1 ligand 1 is one of the two ligands of PD-1. PD-L1 is expressed on macrophages, T cells, B cells, NK cells, DCs and some cancer cell surface. Binding of PD-1 with PD-L1 could result in down-regulation of the immune system by inhibiting the T-cell activation process. Thus, PD-L1 is an important immune checkpoint and popular target for therapeutic antibodies against many cancers. GenScript MonoRab™ Human PD-L1 Antibody (X228), mAb, Rabbit is produced from cell culture in vitro under conditions free from animal-derived components.

**Synonyms :** Rabbit monoclonal to CD274/B7-H/B7H1/PDCD1L1/PDL1/Programmed cell death ligand 1/hPD-L1

**For laboratory research use only. Direct human use, including taking orally and injection and clinical use are forbidden.**