

Rev04  
Update: Oct,19,2022

**DATASHEET**

# Anti-Cetuximab Antibody, pAb, Rabbit

Cat. No.: A01993

## Overview

<b>Specificity</b>	Cetuximab
<b>Host Species</b>	Rabbit
<b>Immunogen</b>	Cetuximab
<b>Conjugate</b>	Unconjugated

## Applications

Working concentrations for specific applications should be determined by the investigators. The appropriate concentrations may be affected by secondary antibody affinity, antigen concentration, the sensitivity of the method of detection, temperature, the length of the incubations, and other factors. The suitability of this antibody for applications other than those listed below has not been determined. The following concentration ranges are recommended starting points for this product.

<b>Application</b>	<b>Recommended Usage</b>
ELISA	0.01-0.1 µg/ml

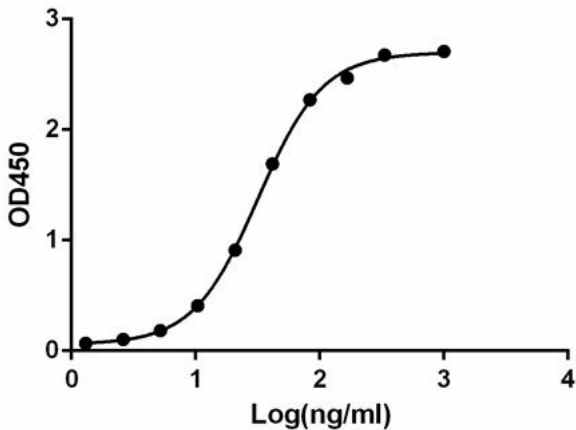
## Properties

<b>Form</b>	Lyophilized
<b>Storage Buffer</b>	Lyophilized with PBS, pH 7.4, containing 0.02% sodium azide.
<b>Reconstitution</b>	Reconstitute the lyophilized powder with deionized water (or equivalent) to a final concentration of 0.5 mg/ml.
<b>Storage Instructions</b>	The lyophilized product remains stable up to 1 year at -20 °C from date of receipt. Upon reconstitution, it can be stored for 2-3 weeks at 2-8 °C or for up to 12 months at -20 °C or below. Avoid repeated freezing and thawing cycles.
<b>Purification</b>	Antigen affinity purification
<b>Isotype</b>	Rabbit IgG
<b>Clonality</b>	Polyclonal

**Note** GenScript can customize this product per customer's request including product size, buffer components, etc.

## Examples

### Anti-Cetuximab Antibody binds with Cetuximab



ELISA binding of Anti-Cetuximab, pAb, Rabbit (GenScript, A01993-40) with Cetuximab. While the antibody does not recognize the human IgG Fc fragment (data not shown).

Coating antigen: Cetuximab, 1  $\mu$ g/ml.

Anti-Cetuximab, pAb, Rabbit (GenScript, A01993-40) dilutions start from 1000 ng/ml.

$EC_{50}$  = 31.87 ng/ml.

## Background

**Target Background :** Cetuximab is a recombinant human/mouse chimeric monoclonal antibody against epidermal growth factor receptor (EGFR). It is composed of the antigen-binding regions of mouse anti EGFR monoclonal antibody specific for the N-terminal portion of human EGFR with human IgG1 heavy and kappa light chain constant regions. Cetuximab is marketed under the brand Erbitux by Eli Lilly Company. It was approved by the US Food and Drug Administration for the treatment of metastatic colorectal cancer and metastatic non-small cell lung cancer. Anti-Cetuximab Antibody, pAb, Rabbit is produced in rabbit immunized with Cetuximab.

**Synonyms :** Rabbit polyclonal to Erbitux

**For laboratory research use only. Direct human use, including taking orally and injection and clinical use are forbidden.**