

Rev05  
Update: Jun,14,2023

**DATASHEET**

# MonoRab™ Anti-Nivolumab Antibody (40F11), mAb, Rabbit

Cat. No.: A01988

## Overview

<b>Specificity</b>	The antibody is recommended as a detection antibody in a pharmacokinetic (PK) bridging assay with capture antibody GenScript, A01987-40, MonoRab Anti-Nivolumab Antibody (33H4), mAb, Rabbit.
<b>Host Species</b>	Rabbit
<b>Immunogen</b>	Nivolumab
<b>Conjugate</b>	Unconjugated

## Applications

Working concentrations for specific applications should be determined by the investigators. The appropriate concentrations may be affected by secondary antibody affinity, antigen concentration, the sensitivity of the method of detection, temperature, the length of the incubations, and other factors. The suitability of this antibody for applications other than those listed below has not been determined. The following concentration ranges are recommended starting points for this product.

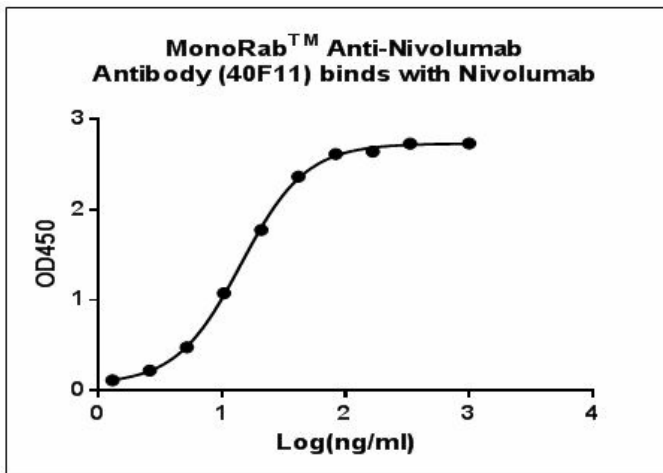
<b>Application</b>	<b>Recommended Usage</b>
ELISA	0.01-0.1 µg/ml

## Properties

<b>Form</b>	Lyophilized
<b>Storage Buffer</b>	Lyophilized with PBS, pH 7.4, containing 0.02% sodium azide.
<b>Reconstitution</b>	Reconstitute the lyophilized powder with deionized water (or equivalent) to a final concentration of 0.5 mg/ml.
<b>Storage Instructions</b>	The lyophilized product remains stable up to 1 year at -20 °C from date of receipt. Upon reconstitution, it can be stored for 2-3 weeks at 2-8 °C or for up to 12 months at -20 °C or below. Avoid repeated freezing and thawing cycles.

<b>Purification</b>	Protein A affinity column
<b>Isotype</b>	Rabbit IgG
<b>Clonality</b>	Monoclonal
<b>Clone ID</b>	40F11
<b>Note</b>	GenScript can customize this product per customer's request including product size, buffer components, etc.

## Examples

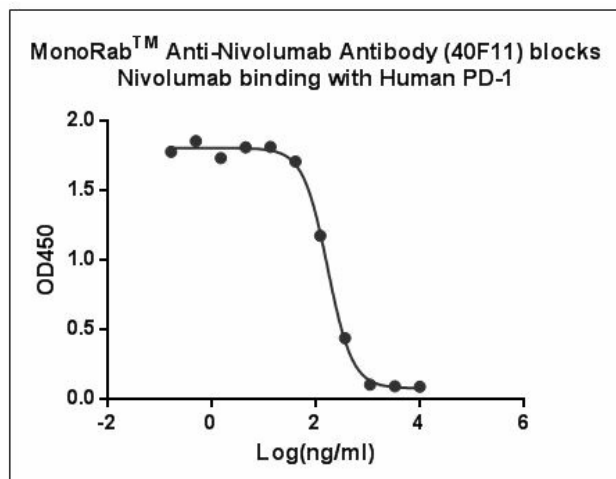


ELISA binding of MonoRab™ Anti-Nivolumab Antibody (40F11) (GenScript, A01988-40) with Nivolumab. While the antibody does not recognize the human IgG Fc fragment (data not shown).

Coating antigen: Nivolumab, 1 µg/ml.

MonoRab™ Anti-Nivolumab Antibody (40F11) (GenScript, A01988-40) dilutions start from 1,000 ng/ml.

EC<sub>50</sub>= 14.3 ng/ml.



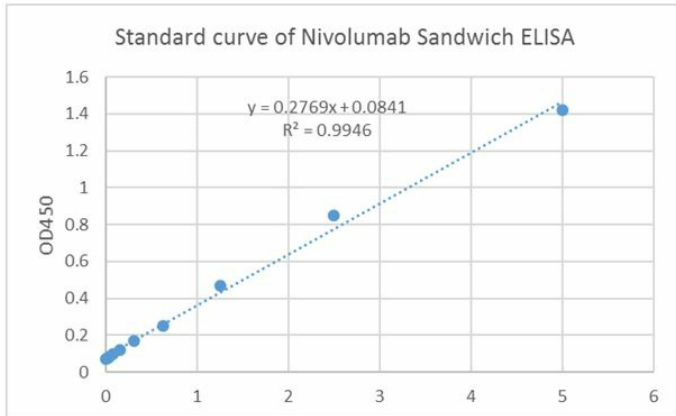
MonoRab™ Anti-Nivolumab Antibody (40F11), mAb, Rabbit (GenScript, A01988-40) blocks Nivolumab binding with Human PD-1 recombinant protein (Z03370, PD-1 Fc Chimera, Human).

Coating antigen: Nivolumab, 1 µg/ml.

PD-1-Fc-biotin final concentration: 10 ng/ml.

MonoRab™ Anti-Nivolumab Antibody (40F11), mAb, Rabbit (GenScript, A01988-40) dilutions start from 10 µg/ml.

IC<sub>50</sub>= 0.17 µg/ml



Standard curve of Nivolumab Sandwich ELISA. The Nivolumab Sandwich ELISA assay is developed by using MonoRab™ Anti-Nivolumab Antibody (33H4), mAb, Rabbit (GenScript, A01987-40) and MonoRab™ Anti-Nivolumab Antibody (40F11) (Genscript, A01988-40) as the capture and detection antibodies, respectively.

In this ELISA assay MonoRab™ Anti-Nivolumab Antibody (40F11) (Genscript, A01988-40) was labeled with Biotin. GenScript can provide customized conjugation services for this product per the customer's request. The sensitivity of detecting Nivolumab is up to 78 pg/ml.

## Background

**Target Background :** Nivolumab is a fully human monoclonal IgG4 antibody that is approved by the U.S. Food and Drug Administration for the treatment of bladder cancer. It binds to the programmed cell death protein 1 (PD-1) on the surface of activated T cells. Nivolumab functions as PD-1 inhibitor for targeted immunotherapy. GenScript MonoRab™ Anti-Nivolumab Antibody (40F11), mAb, Rabbit is produced from a hybridoma resulting from the fusion of partner and B-lymphocytes obtained from a rabbit immunized with Nivolumab.

**Synonyms :** Rabbit monoclonal to Opdivo

**For laboratory research use only. Direct human use, including taking orally and injection and clinical use are forbidden.**

生产商：南京金斯瑞生物科技有限公司 江苏省南京市江宁区科学园雍熙路28号

Manufacturer: Nanjing GenScript Biotech Co., Ltd. No. 28Yongxi Road, Jiangning District, Nanjing, Jiangsu, China