

Human KRT20 Antibody (5G4), mAb, Mouse

PRODUCT INFORMATION

Description

Keratin-20 is a member of the keratin family. The keratins are intermediate filament proteins responsible for the structural integrity of epithelial cells and are subdivided into cytokeratins and hair keratins. KRT20 plays a significant role in maintaining keratin filament organization in intestinal epithelia. When phosphorylated, it plays a role in the secretion of mucin in the small intestine. Diseases associated with KRT20 include Merkel cell carcinoma and ovarian Brenner tumor. Among its related pathways are cytoskeletal signaling and developmental biology.

Specificity

The product is specific for human KRT20. This antibody binds with recombinant KRT20 protein in ELISA and western blot.

Concentration

0.5 mg/ml, lyophilized with PBS, pH 7.4, containing 0.02% sodium azide. (It may be customized for bulk orders.)

Note

GenScript can customize this product per the customer's request including product size, buffer components, etc.

Reconstitution

Reconstitute the lyophilized antibody with deionized water (or equivalent) to a final concentration of 0.5 mg/ml.

Storage

The lyophilized product remains stable up to 1 year at -20 °C from date of receipt. Upon reconstitution, it can be stored for 2-3 weeks at 2-8 °C or for up to 12 months at -20 °C or below. Avoid repeated freezing and thawing cycles.

Applications

Working concentrations for specific applications should be determined by the investigators. The appropriate concentration may be affected by secondary antibody affinity, antigen concentration, the sensitivity of the method of detection, temperature, the length of the incubations, and other factors. The suitability of this antibody for applications other than those listed below has not been determined. The following concentration ranges are recommended starting points for this product.

ELISA detection: 0.05-0.1 µg/ml

Western blot: 1 µg/ml

Other applications: user-optimized

Cat. No.: A01893-40

Host: Mouse

Size: 40 µg

Ig Subclass: IgG2a,K

Clone: 5G4

Immunogen: Recombinant Human KRT20

SwissProt: P35900

Gene ID: 54474

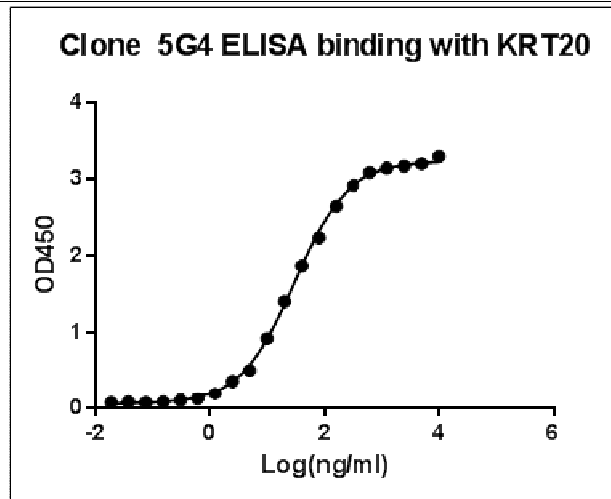
Purification: Protein A affinity column

Conjugation: Unconjugated

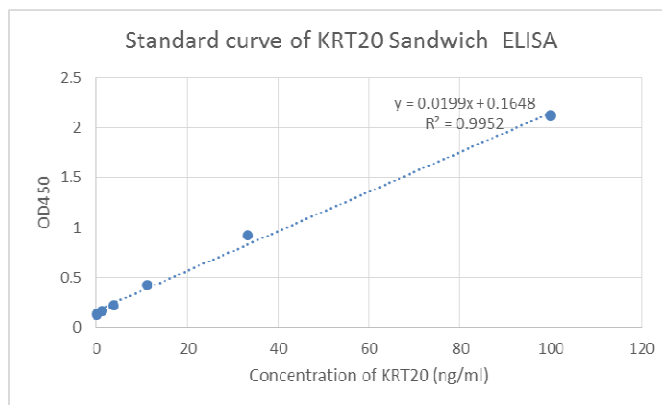
Version: 07/20/2017

** For non-clinical research use only. **

860 Centennial Ave., Piscataway, NJ 08854, USA

Example


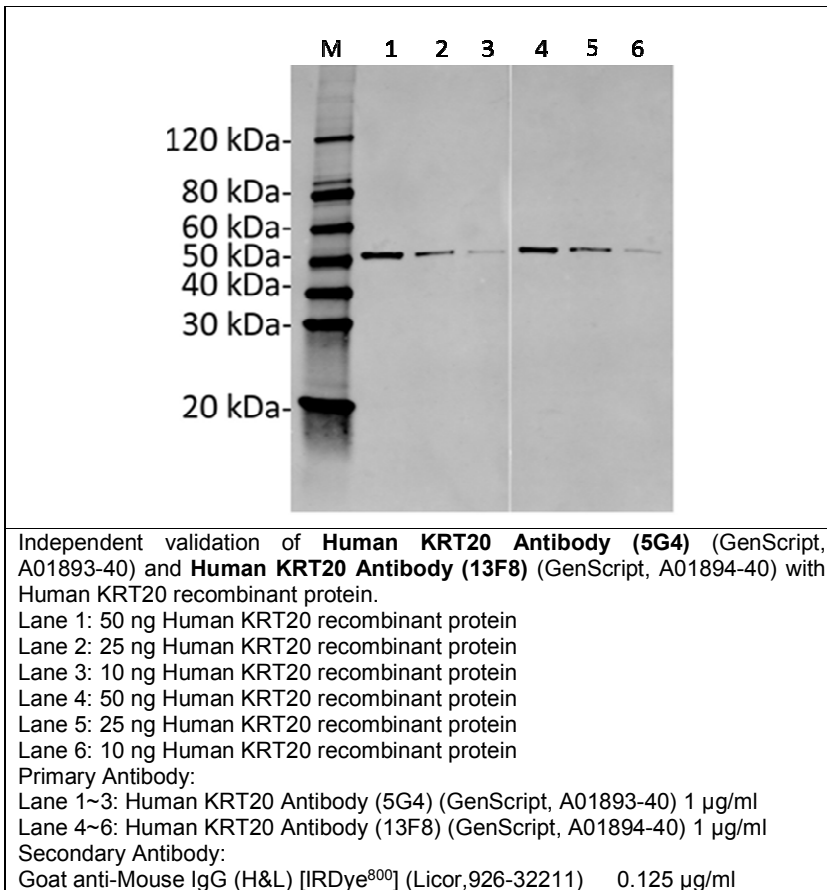
ELISA binding of **Human KRT20 Antibody (5G4)** (GenScript, A01893-40) with Human KRT20 recombinant protein.
 Coating antigen: KRT20, 1 µg/ml.
 KRT20 antibody dilutions start from 1000 ng/ml,
 EC50= 28.85 ng/ml.



Standard curve of KRT20 Sandwich ELISA. The KRT20 Sandwich ELISA assay is developed by using **Human KRT20 Antibody (13F8)** (GenScript, A01894-40) and Biotin conjugated **Human KRT20 Antibody (5G4)** (GenScript, A01893-40) as capture and detect antibody, respectively.
 From the experimental results, Human KRT20 Antibody (13F8) and Human KRT20 Antibody (5G4) identify different epitopes. The sensitivity is <1 ng/ml and the detection range is 0-100 ng/ml.

** For non-clinical research use only. **

860 Centennial Ave., Piscataway, NJ 08854, USA



** For non-clinical research use only. **

860 Centennial Ave., Piscataway, NJ 08854, USA