

Rev03
Update: Dec,14,2021

DATASHEET

Mouse B4galt1 Antibody (3C9), mAb, Mouse

Cat. No.: A01889

Overview

| | |
|---------------------|--|
| Specificity | The product is specific for mouse B4galt1. This antibody binds with recombinant B4galt1 protein in ELISA and western blot. |
| Host Species | Mouse |
| Immunogen | Recombinant Mouse B4galt1 |
| Conjugate | Unconjugated |

Applications

Working concentrations for specific applications should be determined by the investigators. The appropriate concentration may be affected by secondary antibody affinity, antigen concentration, the sensitivity of the method of detection, temperature, the length of the incubations, and other factors. The suitability of this antibody for applications other than those listed below has not been determined. The following concentration ranges are recommended starting points for this product.

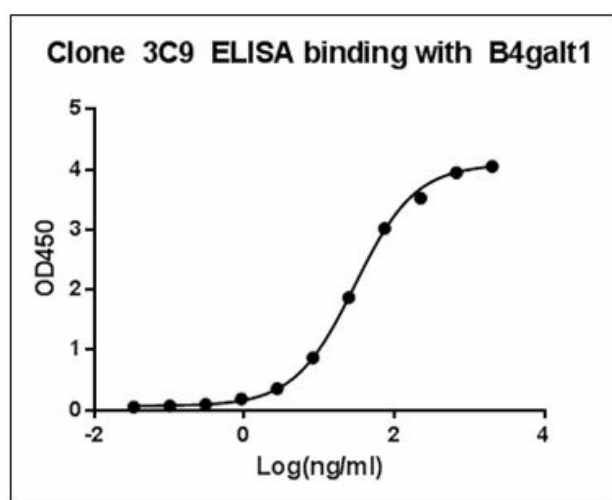
| Application | Recommended Usage |
|--------------------|--------------------------|
| ELISA detection | 0.05-0.1 µg/ml |
| Western Blot | 1 µg/ml |
| Other applications | User-optimized |

Properties

| | |
|-----------------------------|--|
| Form | Lyophilized |
| Storage Buffer | lyophilized with PBS, pH 7.4, containing 0.02% sodium azide. |
| Reconstitution | Reconstitute the lyophilized powder with deionized water (or equivalent) to an final concentration of 0.5 mg/mL. |
| Storage Instructions | The lyophilized product remains stable up to 1 year at -20 °C from date of receipt. Upon reconstitution, it can be stored for 2-3 weeks at 2-8 °C or for up to 12 months at -20 °C or below. Avoid repeated freezing and thawing cycles. |
| Purification | Protein A affinity column |

| | |
|-----------|---|
| Isotype | Mouse IgG2b, κ |
| Clonality | Monoclonal |
| Clone Id | 3C9 |
| Note | GenScript can customize this product per customer's request including product size, buffer components, etc. |

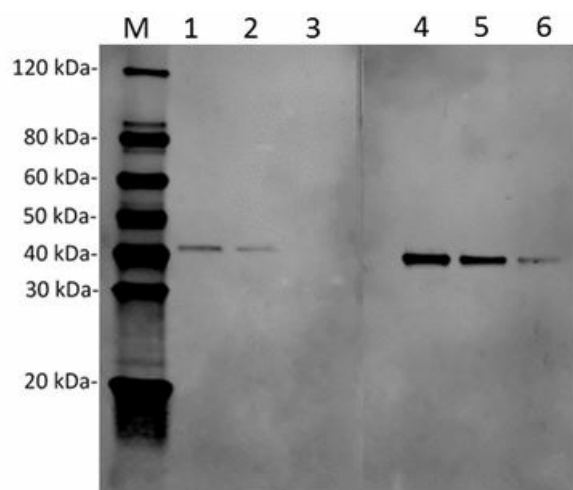
Examples



ELISA binding of Mouse B4galt1 Antibody (3C9) (GenScript, A01889-40) with Mouse B4galt1 recombinant protein.

Coating antigen: B4galt1, 1 μ g/ml.

B4galt1 antibody dilutions start from 1000 ng/ml, EC50= 29.73 ng/ml.



Independent validation of Mouse B4galt1 Antibody (3C9) (GenScript, A01889-40) and Mouse B4galt1 Antibody (11H3) (GenScript, A01890-40) with Mouse B4galt1 recombinant protein.

Lane 1: 50 ng Mouse B4galt1 recombinant protein

Lane 2: 25 ng Mouse B4galt1 recombinant protein

Lane 3: 10 ng Mouse B4galt1 recombinant protein

Lane 4: 50 ng Mouse B4galt1 recombinant protein

Lane 5: 25 ng Mouse B4galt1 recombinant protein

Lane 6: 10 ng Mouse B4galt1 recombinant protein

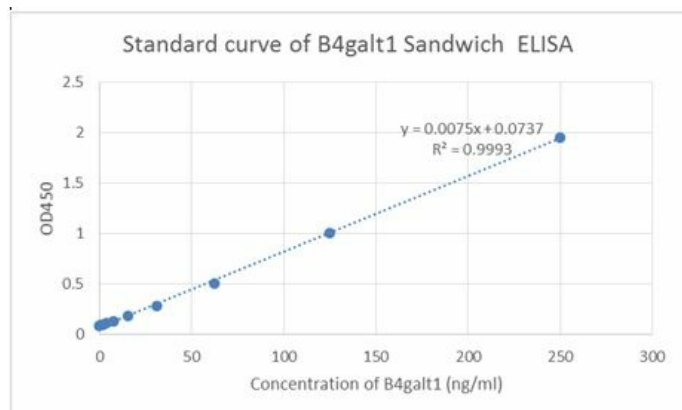
Primary Antibody:

Lane 1~3: Mouse B4galt1 Antibody (3C9) (GenScript, A01889-40) 1 μ g/ml

Lane 4~6: Mouse B4galt1 Antibody (11H3) (GenScript, A01890-40) 1 μ g/ml

Secondary Antibody:

Goat anti-Mouse IgG (H&L) [IRDye800] (Licor,926-32211) 0.125 μ g/ml



Standard curve of B4galt1 Sandwich ELISA. The B4galt1 Sandwich ELISA assay is developed by using Mouse B4galt1 Antibody (11H3) (GenScript, A01890-40) and Biotin conjugated Mouse B4galt1 Antibody (3C9) (GenScript, A01889-40) as capture and detect antibody, respectively.

From the experimental results, Mouse B4galt1 Antibody (11H3) and Mouse B4galt1 Antibody (3C9) identify different epitopes. The sensitivity is 1-2 ng/ml and the detection range is 0-100 ng/ml.

Background

Target Background : B4GALT1 (Beta-1,4-Galactosyltransferase 1) is a protein coding gene. Among its related pathways are transport to the Golgi and subsequent modification and metabolism. B4galt1 is one of seven beta-1,4-galactosyltransferase (beta4GalT) genes. They encode type II membrane-bound glycoproteins that appear to have exclusive specificity for the donor substrate UDP-galactose. The Golgi complex form catalyzes the production of lactose in the lactating mammary gland and could also be responsible for the synthesis of complex-type N-linked oligosaccharides in many glycoproteins as well as the carbohydrate moieties of glycolipids. The cell surface form functions as a recognition molecule during a variety of cell to cell and cell to matrix interactions, as those occurring during development and egg fertilization, by binding to specific oligosaccharide ligands on opposing cells or in the extracellular matrix.

Synonyms : Mouse monoclonal to Beta-1,4-galactosyltransferase 1, Beta-1,4-GalTase 1, Beta4Gal-T1, b4Gal-T1, UDP-Gal:beta-GlcNAc beta-1,4-galactosyltransferase 1, UDP-galactose:beta-N-acetylglucosamine beta-1,4-galactosyltransferase 1

For laboratory research use only. Direct human use, including taking orally and injection and clinical use are forbidden.