

# Human PLA2R1 Antibody (6E8), mAb, Mouse

## PRODUCT INFORMATION

### Description

PLA2R1 (Phospholipase A2 Receptor 1) is a protein coding gene. The encoded protein likely exists as both a transmembrane form and a soluble form. The transmembrane receptor may play a role in clearance of phospholipase A2, thereby inhibiting its action. The soluble secretory phospholipase A2 receptor form is circulating and acts as a negative regulator of sPLA2 (secretory phospholipase A2) functions by blocking the biological functions of sPLA2-IB/PLA2G1B. Diseases associated with PLA2R1 include Membranoproliferative Glomerulonephritis and Membranous Nephropathy. Among its related pathways are metabolism and acyl chain remodeling of PE (phosphatidylethanolamine). Alternatively spliced transcript variants encoding different isoforms have been identified.

### Specificity

The product is specific for human PLA2R1. This antibody binds with recombinant PLA2R1 protein in ELISA and western blot.

### Concentration

0.5 mg/ml, lyophilized with PBS, pH 7.4, containing 0.02% sodium azide. (It may be customized for bulk orders.)

### Note

GenScript can customize this product per the customer's request including product size, buffer components, etc.

### Reconstitution

Reconstitute the lyophilized antibody with deionized water (or equivalent) to a final concentration of 0.5 mg/ml.

### Storage

The lyophilized product remains stable up to 1 year at -20 °C from date of receipt. Upon reconstitution, it can be stored for 2-3 weeks at 2-8 °C or for up to 12 months at -20 °C or below. Avoid repeated freezing and thawing cycles.

### Applications

Working concentrations for specific applications should be determined by the investigators. The appropriate concentration may be affected by secondary antibody affinity, antigen concentration, the sensitivity of the method of detection, temperature, the length of the incubations, and other factors. The suitability of this antibody for applications other than those listed below has not been determined. The following concentration ranges are recommended starting points for this product.

ELISA detection: 0.05-0.5 µg/ml

Western blot: 1 µg/ml

Other applications: user-optimized

**Cat. No.:** A01888-40

**Host:** Mouse

**Size:** 40 µg

**Ig Subclass:** IgG1, $\kappa$

**Clone:** 6E8

**Immunogen:** Recombinant Human PLA2R1

**SwissProt:** Q13018

**Gene ID:** 22925

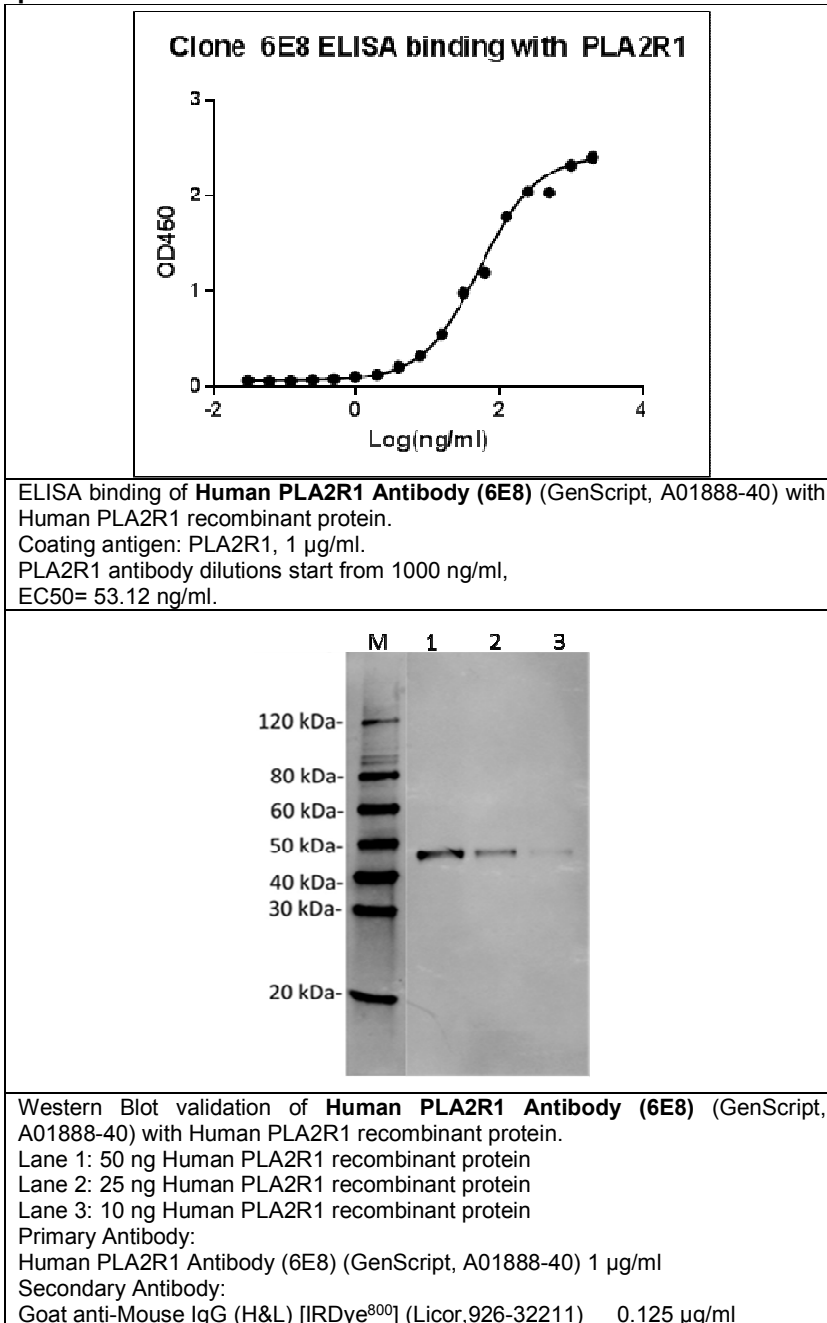
**Purification:** Protein A affinity column

**Conjugation:** Unconjugated

**Version:** 07/20/2017

\*\* For non-clinical research use only. \*\*

**860 Centennial Ave., Piscataway, NJ 08854, USA**

**Example**


\*\* For non-clinical research use only. \*\*

**860 Centennial Ave., Piscataway, NJ 08854, USA**