

GenCrispr Cas9 Antibody, pAb, Rabbit

PRODUCT INFORMATION

Description

CRISPR/Cas9 system is one powerful gene editing tool to specifically modify target genes. Cas9 nuclease is an RNA-guided endonuclease that can catalyze cleavage of double stranded DNA. The GenCrispr Cas9 Antibody is a rabbit polyclonal antibody with *Streptococcus pyogenes* (S. pyogenes) Cas9 protein as the immunization antigen. This antibody is used to detect the expression level of CRISPR/Cas9 in target cells.

Specificity

This antibody recognizes *Streptococcus pyogenes* (S. pyogenes) Cas9 protein (UniProt Accession: Q99ZW2). Other species have not been tested.

Storage

The GenCrispr Cas9 Antibody is liquid in PBS, pH 7.4, containing 50% glycerol. The recommended storage temperature is -20°C.

Applications

Working concentrations for specific applications should be determined by the investigator.

The appropriate concentrations may be affected by secondary antibody affinity, antigen concentration, the sensitivity of the method of detection, temperature, the length of the incubations, and other factors. The suitability of this antibody for applications other than those listed below has not been determined. The following concentration ranges are recommended as starting points for this product.

WB: 1:1000 - 1:5000.

Other applications: user-optimized.

Cat. No.: A01885-100

Host: Rabbit

Size: 100 µl

Ig Subclass: Rabbit IgG

Immunogen: Recombinant *Streptococcus pyogenes* (S. *pyogenes*) Cas9 protein.

Purification: Immunoaffinity chromatography

Conjugation: Unconjugated

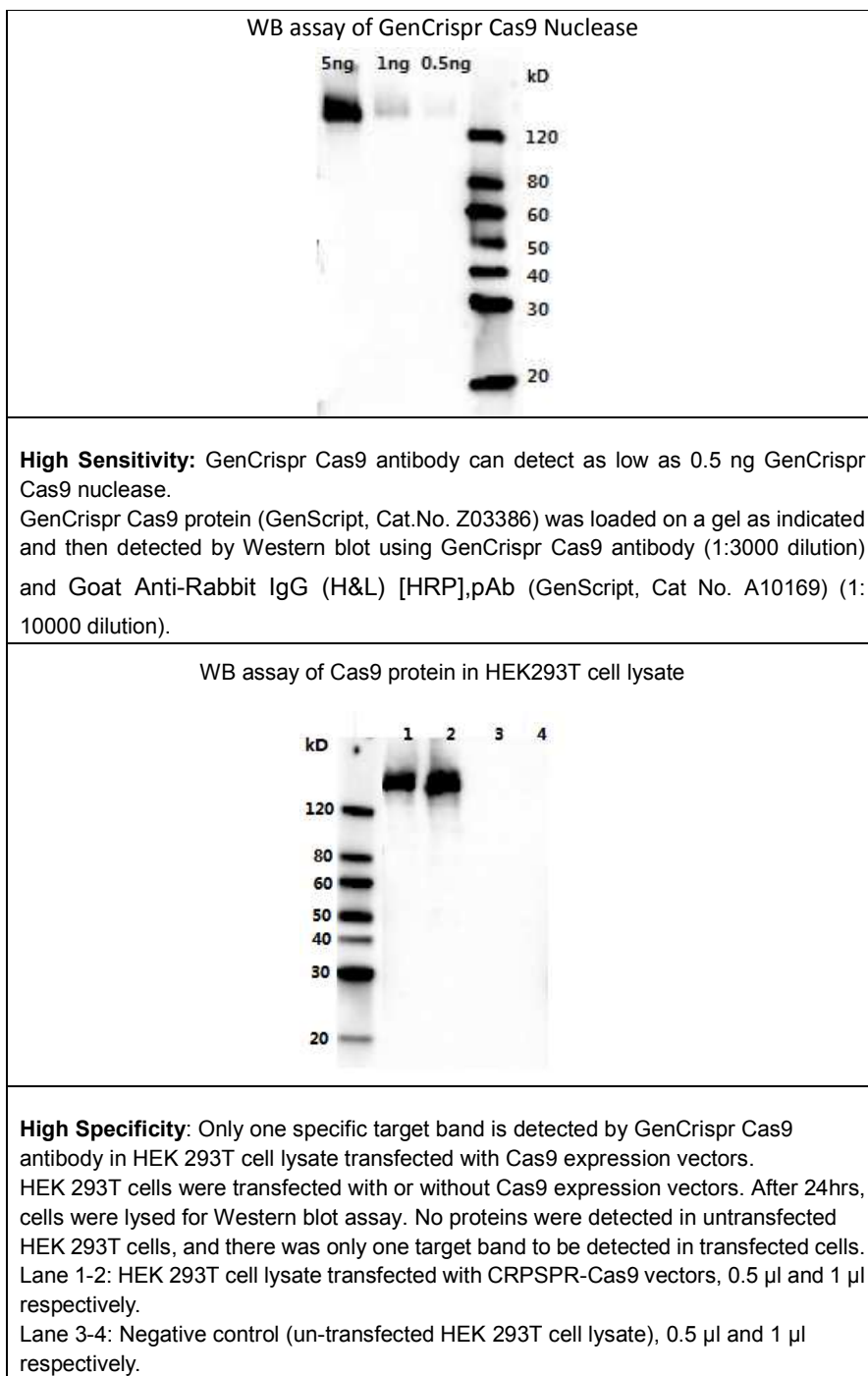
Version: 08/17/2017

** For non-clinical research use only. **

860 Centennial Ave., Piscataway, NJ 08854, USA

Toll-Free: 1-877-436-7274 Tel: 1-732-885-9188 Fax: 1-732-210-0262 Email: product@genscript.com Web: www.genscript.com

Example



** For non-clinical research use only. **

860 Centennial Ave., Piscataway, NJ 08854, USA

Toll-Free: 1-877-436-7274 Tel: 1-732-885-9188 Fax: 1-732-210-0262 Email: product@genscript.com Web: www.genscript.com