

# Human PRTN3 Antibody (11F1A5), mAb, Mouse

## PRODUCT INFORMATION

### Description

PRTN3 (Proteinase 3) is a protein coding gene that belongs to the peptidase S1 family, Elastase subfamily. PRTN3 contains a 1 peptidase S1 domain. Among its related pathways are immune system and cytokine signaling in the immune system. PRTN3 degrades elastin, fibronectin, laminin, vitronectin, and collagen types I, III, and IV (in vitro) and causes emphysema when administered by tracheal insufflation to hamsters. Diseases associated with PRTN3 include Wegener Granulomatosis and Rapidly Progressive Glomerulonephritis.

### Specificity

The product is specific for human PRTN3. This antibody binds with recombinant PRTN3 protein in ELISA and Western blot.

### Concentration

0.5 mg/ml, lyophilized with PBS, pH 7.4, containing 0.02% sodium azide. (It may be customized for bulk orders.)

### Note

GenScript can customize this product per the customer's request including product size, buffer components, etc.

### Reconstitution

Reconstitute the lyophilized antibody with deionized water (or equivalent) to a final concentration of 0.5 mg/ml.

### Storage

The lyophilized product remains stable up to 1 year at -20 °C from date of receipt. Upon reconstitution, it can be stored for 2-3 weeks at 2-8 °C or for up to 12 months at -20 °C or below. Avoid repeated freezing and thawing cycles.

### Applications

Working concentrations for specific applications should be determined by the investigators. The appropriate concentration may be affected by secondary antibody affinity, antigen concentration, the sensitivity of the method of detection, temperature, the length of the incubations, and other factors. The suitability of this antibody for applications other than those listed below has not been determined. The following concentration ranges are recommended starting points for this product.

ELISA detection: 0.01-0.1 µg/ml

Western blot: 1 µg/ml

Other applications: user-optimized

**Cat. No.:** A01884-40

**Host:** Mouse

**Size:** 40 µg

**Ig Subclass:** IgG2b,k

**Clone:** 11F1A5

**Immunogen:** Recombinant

Human PRTN3

**SwissProt:** P24158

**Gene ID:** 5657

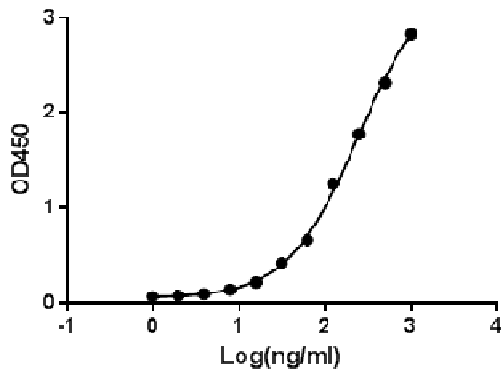
**Purification:** Protein A affinity column

**Conjugation:** Unconjugated

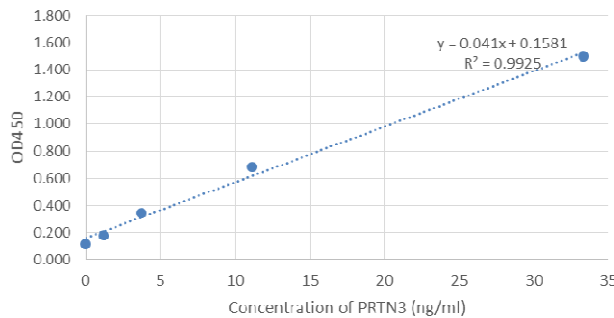
**Version:** 07/20/2017

\*\* For non-clinical research use only. \*\*

**860 Centennial Ave., Piscataway, NJ 08854, USA**

**Example**
**Clone 11F1A5 ELISA binding with PRTN3**


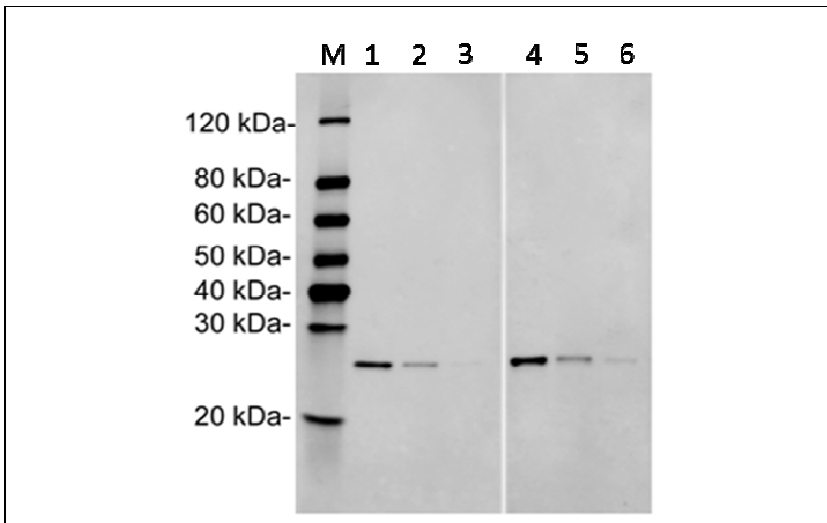
ELISA binding of **Human PRTN3 Antibody (11F1A5)** (GenScript, A01884-40) with Human PRTN3 recombinant protein.  
 Coating antigen: PRTN3, 1 µg/ml.  
 PRTN3 antibody dilutions start from 1000 ng/ml,  
 EC50= 9.667 ng/ml.

**Standard curve of PRTN3 Sandwich ELISA**


Standard curve of PRTN3 Sandwich ELISA. The PRTN3 Sandwich ELISA assay is developed by using **Human PRTN3 Antibody (11F1A5)** (GenScript, A01884-40) and Biotin conjugated **Human PRTN3 Antibody (15E12D7)** (GenScript, A01883-40) as capture and detect antibody, respectively. From the experimental results, Human PRTN3 Antibody (11F1A5) and Human PRTN3 Antibody (15E12D7) identify different epitopes. The sensitivity is <1 ng/ml and the detection range is 0-100 ng/ml.

\*\* For non-clinical research use only. \*\*

**860 Centennial Ave., Piscataway, NJ 08854, USA**



Independent validation of **Human PRTN3 Antibody (11F1A5)** (GenScript, A01884-40) and **Human PRTN3 Antibody (15E12D7)** (GenScript, A01883-40) with Human PRTN3 recombinant protein.

Lane 1: 50 ng Human PRTN3 recombinant protein

Lane 2: 10 ng Human PRTN3 recombinant protein

Lane 3: 5 ng Human PRTN3 recombinant protein

Lane 4: 50 ng Human PRTN3 recombinant protein

Lane 5: 10 ng Human PRTN3 recombinant protein

Lane 6: 5 ng Human PRTN3 recombinant protein

Primary Antibody:

Lane 1~3: Human PRTN3 Antibody (11F1A5) (GenScript, A01884-40) 1 µg/ml

Lane 4~6: Human PRTN3 Antibody (15E12D7) (GenScript, A01883-40) 1 µg/ml

Secondary Antibody:

Goat anti-Mouse IgG (H&L) [IRDye<sup>800</sup>] (Licor, 926-32211) 0.125 µg/ml

\*\* For non-clinical research use only. \*\*

**860 Centennial Ave., Piscataway, NJ 08854, USA**