

# MonoRab™ Beta Actin Antibody, mAb, Rabbit

Cat. No.: A01865

## Overview

<b>Specificity</b>	GenScript MonoRab™ Beta-Actin Antibody, mAb, Rabbit reacts with mouse, human, hamster, and rat. It has not yet been tested in other species.
<b>Host Species</b>	Rabbit
<b>Immunogen</b>	A synthetic peptide coupled to KLH
<b>Conjugate</b>	Unconjugated

## Applications

Working concentrations for specific applications should be determined by the investigators. The appropriate concentrations may be affected by primary/secondary antibody affinity, antigen concentration, the sensitivity of the method of detection, temperature, the length of the incubations, and other factors. The suitability of this antibody for applications other than those listed below has not been determined. The following concentration ranges are recommended starting points for this product. Optimal working dilutions must be determined by the end user.

<b>Application</b>	<b>Recommended Usage</b>
Western Blot	1:1,000-1:5,000
ELISA	1:5,000-1:10,000

## Properties

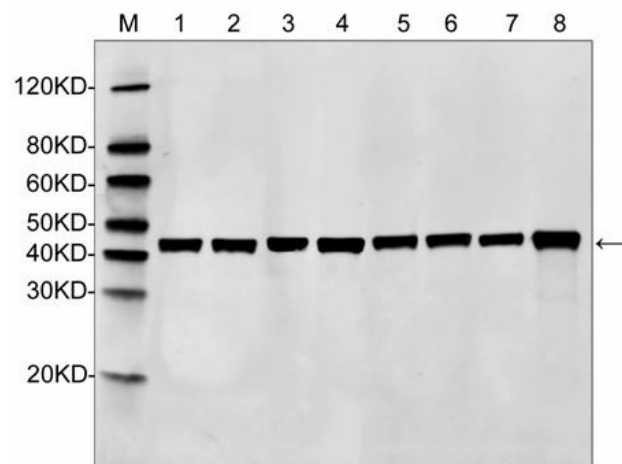
<b>Form</b>	Lyophilized
<b>Storage Buffer</b>	lyophilized with PBS, pH 7.4, containing 0.02% sodium azide.
<b>Reconstitution</b>	Reconstitute the lyophilized powder with deionized water (or equivalent) to an final concentration of 0.5 mg/mL.
<b>Storage Instructions</b>	The lyophilized product remains stable up to 1 year at -20 °C from date of receipt. Upon reconstitution, it can be stored for 2-3 weeks at 2-8 °C or for up to 12 months at -20 °C or below. Avoid repeated freezing and thawing cycles.
<b>Purification</b>	Protein A affinity column

<b>Isotype</b>	Rabbit IgG
<b>Clonality</b>	Monoclonal
<b>Clone ID</b>	79E2D7

## Examples



Comparison of IHC using beta actin rabbit mAb on monkey heart tissue, 0.25µg/ml, and hematoxylin counterstain. GenScript MonoRab™ Beta Actin Antibody, mAb, Rabbit (A01865-40) shows stronger signal with low background compared with other suppliers.



Western Blot analysis of MonoRab™ Beta-Actin Antibody, mAb, Rabbit (GenScript) with various immunoglobulins.

Lane 1: 10µg HeLa cell Lysate

Lane 2: 10µg CHO cell Lysate

Lane 3: 10µg HepG2 cell Lysate

Lane 4: 10µg HEK293 cell Lysate

Lane 5: 10µg Romas cell Lysate

Lane 6: 10µg SP20 cell Lysate

Lane 7: 10µg Rat Liver tissue lysate

Lane 8: 10µg Mouse spleen tissue lysate

Primary Antibody:

MonoRab™ Beta-Actin Antibody, mAb, Rabbit (0.2µg/ml)

Secondary Antibody:

Goat anti-Rabbit IgG (H&L) [IRDye800] (Licor,926-32211)

(0.125µg)

## Background

**Target Background :** Beta-actin is one of the six different actin isoforms that have been identified. The actin molecules found in cells of various species and tissues tend to be very similar in their immunological and physical properties. As a consequence, it has been difficult to produce potent antisera against this protein. Therefore, the availability of monoclonal antibodies to  $\beta$ -actin provides a useful and specific tool in the study of the intracellular distribution of  $\beta$ -actin and the static and dynamic aspects of the cytoskeleton. GenScript MonoRab™ Beta-Actin Antibody, mAb, Rabbit is produced from a hybridoma resulting from the fusion of partner and B-lymphocytes obtained from a rabbit immunized with a synthetic peptide coupled to KLH.

**Synonyms :** Mouse monoclonal to PS1TP5-Binding Protein 1/Beta Cytoskeletal Actin/Actin, Cytoplasmic 1/Beta-Actin/PS1TP5BP1/BRWS1

**For laboratory research use only. Direct human use, including taking orally and injection and clinical use are forbidden.**