

Rev04
Update: Oct,19,2022

DATASHEET

Human CTLA-4 Antibody (CT.F3), mAb, Mouse

Cat. No.: A01832

Overview

Specificity	The product is specific for human CTLA4 (UniProt Accession: P16410). This antibody blocks human CTLA4 ligand binding in ELISA assay and its signaling in cell based functional assay.
Host Species	Mouse
Immunogen	Recombinant human CTLA4-Fc (Z03373)
Conjugate	Unconjugated

Applications

Working concentrations for specific applications should be determined by the investigators. The appropriate concentrations may be affected by secondary antibody affinity, antigen concentration, the sensitivity of the method of detection, temperature, the length of the incubations, and other factors. The suitability of this antibody for applications other than those listed below has not been determined. The following concentration ranges are recommended starting points for this product.

Application	Recommended Usage
ELISA	0.01-0.1 µg/ml
Competitive ELISA	10-50 µg/ml
Flow Cytometry	2-10 µg/ml

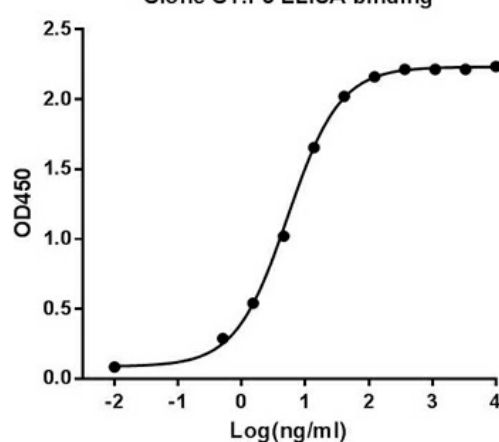
Properties

Form	Lyophilized
Storage Buffer	lyophilized with PBS, pH 7.4, containing 0.02% sodium azide.
Reconstitution	Reconstitute the lyophilized powder with deionized water (or equivalent) to an final concentration of 0.5 mg/mL.
Storage Instructions	The lyophilized product remains stable up to 1 year at -20 °C from date of receipt. Upon reconstitution, it can be stored for 2-3 weeks at 2-8 °C or for up to 12 months at -20 °C or below. Avoid repeated freezing and thawing cycles.

Purification	Protein A affinity column
Isotype	Mouse IgG1, κ
Clonality	Monoclonal
Clone ID	CT.F3
Note	GenScript can customize this product per customer's request including product size, buffer components, etc.

Examples

Clone CT.F3 ELISA binding

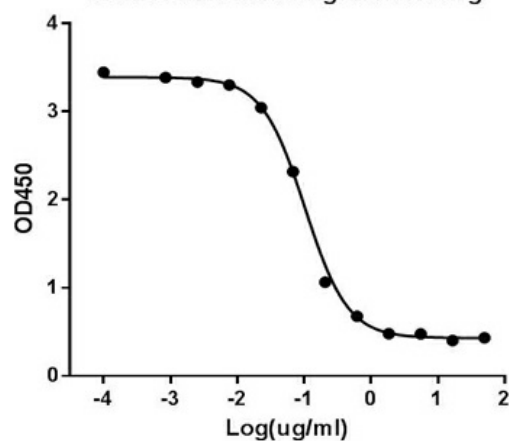


ELISA binding of **human CTLA4 antibody CT.F3** (GenScript, A01832) with Human CTLA4 recombinant protein (Z03373, CTLA4 Fc Chimera, Human).

Coating antigen: CTLA4-Fc, 0.5 μ g/ml.

CTLA4 antibody dilution start from 10000 ng/ml, EC50= 5.32 ng/ml

Clone CT.F3 ELISA ligand blocking

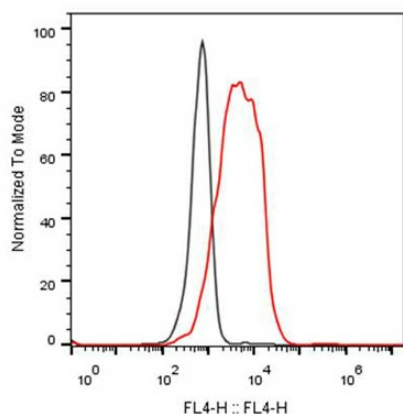


ELISA blocking of **human CTLA4 antibody CT.F3** (GenScript, A01832) against Human CD86 recombinant protein (141-B2, CD86 Fc Chimera, Human) binding with Human CTLA4 recombinant protein (7268-CT, CTLA4 Fc Chimera, Human).

Coating antigen: PD-1-Fc, 1 μ g/ml.

CD86-Fc final concentration: 0.5 μ g/ml

CTLA4 antibody dilution start from 50 μ g/ml, IC50= 0.103 μ g/ml



Flow cytometric analysis of CHO-K1/CTLA4 stable cell expressing CTLA4 (GenScript, M00530, Red) and CHO negative control cell (Black) binding with **Human CTLA4 Antibody CT.F3** (GenScript, A01832)

Antibody working concentration: 5 µg/ml, 2.5x10⁵ cells/reaction

The signal was developed with iFluor647 conjugated Goat Anti-Mouse IgG

Background

Target Background : CTLA-4 (cytotoxic T-lymphocyte-4, designated CD152), is a type I transmembrane T cell inhibitory molecule that is a member of the Ig superfamily. CTLA-4 is recruited from intracellular vesicles to the immunological synapse beginning 1-2 days after T cell activation. It forms a linear lattice with B7-1 on APC, inducing negative regulatory signals and ending T cell activation.

Synonyms : Mouse monoclonal to cytotoxic T-lymphocyte associated protein 4/CD/ GSE/ GRD4/ ALPS5/ CD152/ CTLA-4/ IDDM12/ CELIAC3

For laboratory research use only. Direct human use, including taking orally and injection and clinical use are forbidden.