

Rev06  
Update: Nov,03,2023

## DATASHEET

# Mouse Anti-Rabbit IgG Antibody (M205) [HRP], mAb

Cat. No.: A01827

## Overview

<b>Specificity</b>	GenScript Anti-Rabbit IgG Antibody (M205) only reacts with native rabbit IgG and does not bind to the denatured or reduced rabbit IgG heavy chain or light chain. The monoclonal antibody has no cross-reactivity with mouse, rat, bovine, goat, or sheep immunoglobulins and limited cross-reactivity with human immunoglobulins.
<b>Host Species</b>	Mouse
<b>Immunogen</b>	Rabbit IgG(H&L)
<b>Species Reactivity</b>	Rabbit
<b>Conjugate</b>	Horseradish peroxidase (HRP)

## Applications

Working concentrations for specific applications should be determined by the investigator. The appropriate concentration may be affected by primary antibody affinity, antigen concentration, the sensitivity of the method of detection, temperature, the length of the incubations, and other factors. The suitability of this antibody for applications other than those listed below has not been determined. The following concentration ranges are recommended starting points for this product. Optimal working dilutions must be determined by the end user.

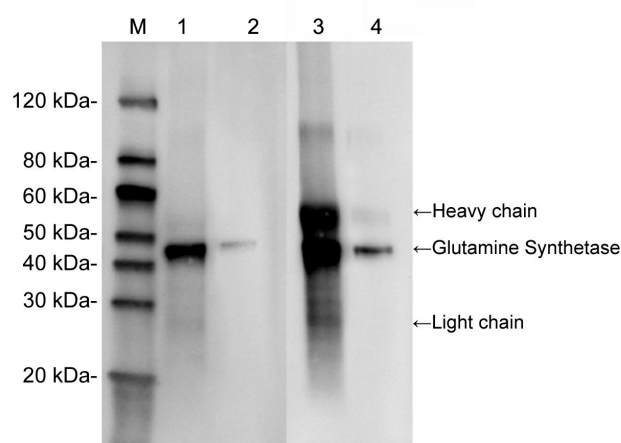
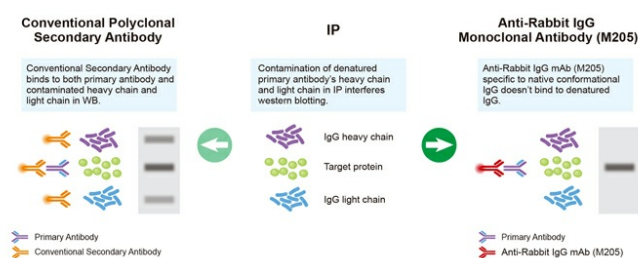
<b>Application</b>	<b>Recommended Usage</b>
Western Blot	1:5,000 -1:20,000
ELISA	1:5,000 -1:20,000
Immunohistochemistry (IHC)	User-optimized

## Properties

<b>Form</b>	Liquid
<b>Storage Buffer</b>	Supplied in PBS (pH 7.4), containing 1% BSA, 50% glycerol and 0.01% thimerosal.
<b>Concentration</b>	Not applicable

<b>Storage Instructions</b>	The lyophilized product remains stable for up to 1 year at -20 °C from the date of receipt. Upon reconstitution, it can be stored for 2-3 weeks at 2-8 °C or for up to 12 months at -20 °C or below. Avoid repeated freezing and thawing cycles.
<b>Purification</b>	Protein A affinity column
<b>Isotype</b>	Mouse IgG1, $\kappa$
<b>Clonality</b>	Monoclonal
<b>Clone ID</b>	M205

## Examples



Western blot of IP samples with A01827 or conventional secondary antibodies.

Loading:

Lane 1,3: Protein A beads (40  $\mu$ l) + Glutamine Synthetase

Antibody, pAb, Rabbit (10  $\mu$ g) + Mouse brain lysate (200  $\mu$ g)

Lane 2,4: Mouse brain lysate (20  $\mu$ g)

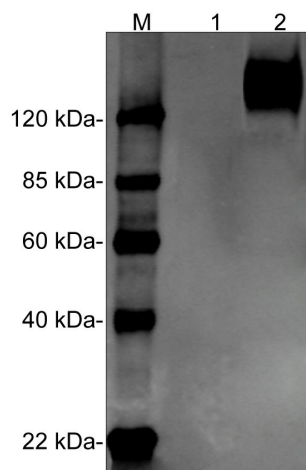
Primary antibody:

Lane 1~4: Glutamine Synthetase Antibody, pAb, Rabbit

Secondary antibody:

Lane 1,2: Mouse Anti-Rabbit IgG Antibody (M205) [HRP], mAb (GenScript, A01827), 1:5,000

Lane 3,4: Anti-RABBIT IgG (H&L) (GOAT) Antibody Peroxidase Conjugated (Min X Bv Ch Gt GP Ham Hs Hu Ms Rt & Sh Serum Proteins), 1:5,000



Western blot of reduced and non-reduced rabbit IgG with A01827.

Loading:

Lane 1: Rabbit IgG (Reduced), 200 ng

Lane 2: Rabbit IgG (Non-reduced), 200 ng

We recommend loading no more than 200 ng of purified sample per lane

Detection antibody:

Lane 1~2: Mouse Anti-Rabbit IgG Antibody (M205) [HRP], mAb (GenScript, A01827), 1:5,000

## Background

**Target Background :** Generally, goat or donkey anti-rabbit IgG polyclonal antibodies are used as secondary antibodies to detect rabbit primary antibodies. However, since polyclonal antibodies recognize many epitopes, the background and cross reactivity in many assays is usually high, making results hard to interpret. To minimize background, cross reactivity and improve the lot-to-lot consistency, a unique Anti-Rabbit IgG Antibody (M205) has been developed to use as a secondary antibody. Simply substitute conventional HRP or fluorescent reagents for unparalleled clarity in results and high quality results in immunoprecipitation, Western Blot, ELISA, Immunohistochemistry and Immunofluorescence. Anti-Rabbit IgG Antibody (M205) only recognizes native rabbit primary IgG antibodies. This antibody does not react with denatured or reduced rabbit IgG heavy or light chain. Immunoprecipitation and Western blots often suffer from primary antibody heavy and light chain contamination at approximately 50 and 25 kDa, which is caused by poor specificity of conventional polyclonal secondary antibodies derived from goat or other species.

**Synonyms :** Anti-Rabbit IgG [HRP]

**For laboratory research use only. Direct human use, including taking orally and injection and clinical use are forbidden.**

生产商：南京金斯瑞生物科技有限公司 江苏省南京市江宁区科学园雍熙路28号

Manufacturer: Nanjing GenScript Biotech Co., Ltd. No. 28Yongxi Road, Jiangning District, Nanjing, Jiangsu, China