

Rev04  
 Update: Oct,19,2022

## DATASHEET

# Human AFP Antibody (3B6G7), mAb, Mouse

Cat. No.: A01790

## Overview

<b>Specificity</b>	AFP monoclonal antibodies (1D9H5, 2E1C10 and 3B6G7) recognize human AFP protein.
<b>Host Species</b>	Mouse
<b>Immunogen</b>	AFP protein purified from human hepatocellular carcinoma.
<b>Conjugate</b>	Unconjugated

## Applications

Application	Recommended Usage
Sandwich ELISA	Capture: 1-10 µg/ml Detection: 0.05-0.2 µg/ml

These antibodies are perfect choice for in vitro diagnostic assay development. And they are prepared for non-clinical research use only. The recommended pairs are based on our laboratory results.

Detection	Capture		
	A01788 (1D9H5)	A01789 (2E1C10)	A01790 (3B6G7)
A01788 (1D9H5)		-	+
A01789 (2E1C10)	+		-
A01790 (3B6G7)	-	-	

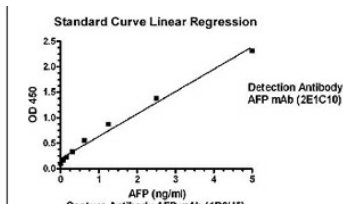
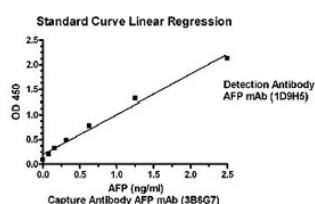
The above data was achieved by Sandwich ELISA. '+' means reaction and '-' means no reaction.  
 The number of '+' represents reaction intensity.

## Properties

<b>Form</b>	Liquid
<b>Storage Buffer</b>	in PBS buffer, pH 7.4, containing 0.02% sodium azide.
<b>Concentration</b>	0.5 mg/ml

<b>Storage Instructions</b>	For long term storage, aliquot and store at -20°C or below. Avoid repeated freezing and thawing cycles.
<b>Purification</b>	Protein A affinity column
<b>Isotype</b>	Mouse IgG1, $\kappa$
<b>Clonality</b>	Monoclonal
<b>Clone ID</b>	3B6G7

## Examples



Antibody pairs analysis of AFP monoclonal antibodies by Sandwich ELISA:

### General conditions:

1. Microplate was incubated with a capture antibody against AFP and blocked with PBS containing 1% BSA, followed by 3 washing cycles.
2. Incubation with AFP protein followed by 3 washing cycles.
3. Incubation with Biotin labeled detection antibody against AFP, followed by 3 washing cycles.
4. Incubation with Streptavidin-HRP, followed by 3 washing cycles.
5. Colorimetric determination of bound peroxidase activity.

## Background

**Target Background :** AFP (Alpha-Feto Protein) is a glycoprotein with molecular weight of approximately 70 kDa. It is a major protein in developing fetus and decreases to lower level after birth. In healthy adults, less than 20 ng/ml of AFP is found in the serum. Serum AFP elevates when hepatocellular carcinoma or testicular germ cell tumors occurs. Therefore, it is a useful marker in diagnosing hepatocellular carcinoma and germ cell tumors. In addition, for pregnant women, the AFP concentration is 10-150 ng/ml in the blood. High levels of AFP can indicate a neural tube defect of the fetus, such as spina bifida. GenScript Human AFP Antibody, mAb, Mouse is produced from the hybridoma resulting from fusion of SP2/0-Ag14 myeloma and B-lymphocytes obtained from mouse immunized with AFP protein purified from human hepatocellular carcinoma (Swiss-Prot: P02771).

**Synonyms :** Human AFP Antibody (3B6G7), mAb, Mouse;

**For laboratory research use only. Direct human use, including taking orally and injection and clinical use are forbidden.**