

Rev04
 Update: Oct,19,2022

DATASHEET

Human AFP Antibody (1D9H5), mAb, Mouse

Cat. No.: A01788

Overview

Specificity	AFP monoclonal antibodies (1D9H5, 2E1C10 and 3B6G7) recognize human AFP protein.
Host Species	Mouse
Immunogen	AFP protein purified from human hepatocellular carcinoma.
Conjugate	Unconjugated

Applications

Application	Recommended Usage
Sandwich ELISA	Capture: 1-10 µg/ml Detection: 0.05-0.2 µg/ml

These antibodies are perfect choice for in vitro diagnostic assay development. And they are prepared for non-clinical research use only. The recommended pairs are based on our laboratory results.

Detection	Capture		
	A01788 (1D9H5)	A01789 (2E1C10)	A01790 (3B6G7)
A01788 (1D9H5)		-	+
A01789 (2E1C10)	+		-
A01790 (3B6G7)	-	-	

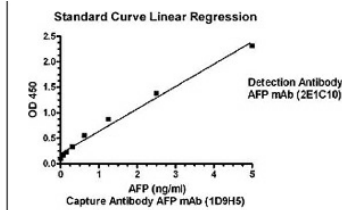
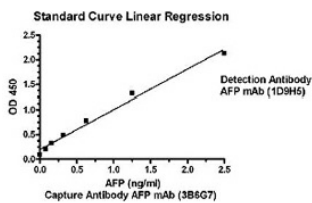
The above data was achieved by Sandwich ELISA. '+' means reaction and '-' means no reaction. The number of '+' represents reaction intensity.

Properties

Form	Liquid
Storage Buffer	in PBS buffer, pH 7.4, containing 0.02% sodium azide.
Concentration	0.5 mg/ml

Storage Instructions	For long term storage, aliquot and store at -20°C or below. Avoid repeated freezing and thawing cycles.
Purification	Protein A affinity column
Isotype	Mouse IgG1, κ
Clonality	Monoclonal
Clone ID	1D9H5

Examples



Antibody pairs analysis of AFP monoclonal antibodies by Sandwich ELISA:

General conditions:

1. Microplate was incubated with a capture antibody against AFP and blocked with PBS containing 1% BSA, followed by 3 washing cycles.
2. Incubation with AFP protein followed by 3 washing cycles.
3. Incubation with Biotin labeled detection antibody against AFP, followed by 3 washing cycles.
4. Incubation with Streptavidin-HRP, followed by 3 washing cycles.
5. Colorimetric determination of bound peroxidase activity.

Background

Target Background : AFP (Alpha-Feto Protein) is a glycoprotein with molecular weight of approximately 70 kDa. It is a major protein in developing fetus and decreases to lower level after birth. In healthy adults, less than 20 ng/ml of AFP is found in the serum. Serum AFP elevates when hepatocellular carcinoma or testicular germ cell tumors occurs. Therefore, it is a useful marker in diagnosing hepatocellular carcinoma and germ cell tumors. In addition, for pregnant women, the AFP concentration is 10-150 ng/ml in the blood. High levels of AFP can indicate a neural tube defect of the fetus, such as spina bifida. GenScript Human AFP Antibody, mAb, Mouse is produced from the hybridoma resulting from fusion of SP2/0-Ag14 myeloma and B-lymphocytes obtained from mouse immunized with AFP protein purified from human hepatocellular carcinoma (Swiss-Prot: P02771).

Synonyms : Human AFP Antibody (1D9H5), mAb, Mouse;

For laboratory research use only. Direct human use, including taking orally and injection and clinical use are forbidden.