

Rev07
Update: Nov,03,2023

DATASHEET

SUMO-tag Antibody(4G11E9), mAb, Mouse

Cat. No.: A01693

Overview

Specificity	GenScript SUMO-tag Antibody (4G11E9), mAb, Mouse specifically reacts with fusion proteins containing SUMO epitope tags.
Host Species	Mouse
Immunogen	Purified recombinant yeast SUMO protein (DSEVNQEAKPEVKPEVKPETHINLKVSDGSSEIFFKIKKTTPLRRLMEAFKRQ GKEMDSLRFlyDG IRIQADQAPEDLDMEDNDIIEAHREQIGG)
Conjugate	Unconjugated

Applications

Working concentrations for specific applications should be determined by the investigator. The appropriate concentrations may be affected by secondary antibody affinity, antigen concentration, the sensitivity of the method of detection, temperature, the length of the incubations, and other factors. The suitability of this antibody for applications other than those listed below has not been determined. The following concentration ranges are recommended starting points for this product.

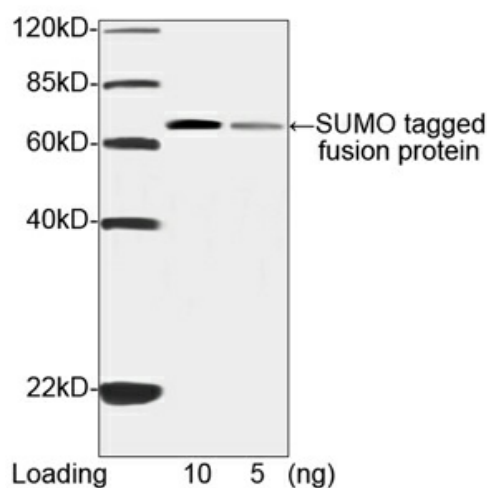
Application	Recommended Usage
ELISA	0.05-0.2 µg/ml
Western Blot	0.5-1 µg/ml

Properties

Form	Lyophilized
Storage Buffer	lyophilized with PBS, pH 7.4, containing 0.02% sodium azide
Reconstitution	Reconstitute the lyophilized powder with deionized water (or equivalent) to an final concentration of 0.5 mg/mL.
Storage Instructions	The lyophilized product remains stable for up to 1 year at -20 °C from the date of receipt. Upon reconstitution, it can be stored for 2-3 weeks at 2-8 °C or for up to 12 months at -20 °C or below. Avoid repeated freezing and thawing cycles.

Purification	Protein A affinity column
Isotype	Mouse IgG2a, κ
Clonality	Monoclonal
Clone ID	4G11E9

Examples

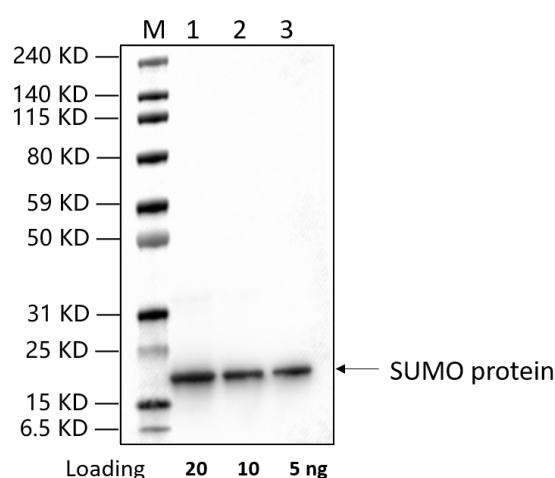


Western blot analysis of SUMO-tagged fusion protein using SUMO-tag Antibody (4G11E9), mAb, Mouse (GenScript, A01693, 1 μ g/ml)

The signal was developed with IRDyeTM 800 Conjugated Goat Anti-Mouse IgG.

Predicted Size: 62 kD

Observed Size: 62 kD



Western Blot of SUMO protein with SUMO-tag Antibody (4G11E9), mAb, Mouse (GenScript, A01693)

Lane 1: 20 ng SUMO protein

Lane 2: 10 ng SUMO protein

Lane 3: 5 ng SUMO protein

Primary Antibody:

SUMO-tag Antibody (4G11E9), mAb, Mouse (GenScript, A01693), 1 μ g/ml

Secondary Antibody:

Peroxidase-AffiniPure Goat Anti-Mouse IgG, Fc γ Fragment Specific, 0.2 μ g/ml

Predicted Size: 11 kD

Observed Size: 18 kD

Background

Target Background : SUMO tags are emerging as a viable alternative for increasing both the expression and solubility of otherwise hard-to-express proteins. The SUMO tag can be cleanly excised using SUMO protease, which recognizes the conformation of SUMO protein rather than a specific sequence within SUMO. The SUMO system can be used effectively in both prokaryotic and eukaryotic systems. GenScript SUMO-tag Antibody (4G11E9), mAb, Mouse is suitable for detecting fusion proteins that contain a SUMO-tag. GenScript SUMO-tag Antibody (4G11E9), mAb, Mouse is produced from the hybridoma resulting from fusion of Sp2/0 myeloma and lymphocytes obtained from mouse immunized with recombinant yeast SUMO protein.

Synonyms : SUMO Antibody;

For laboratory research use only. Direct human use, including taking orally and injection and clinical use are forbidden.

生产商：南京金斯瑞生物科技有限公司 江苏省南京市江宁区科学园雍熙路28号

Manufacturer: Nanjing GenScript Biotech Co., Ltd. No. 28Yongxi Road, Jiangning District, Nanjing, Jiangsu, China