

Rev03
 Update: Dec,14,2021

DATASHEET

PSA Antibody (5B10D4), mAb, Mouse

Cat. No.: A01663

Overview

Specificity	PSA monoclonal antibodies (5B10D4, 8A9B8, 1G9G8, 4A5D10 and 1A7D4) recognize total PSA, freePSA and ACT- PSA Complex (Prostate Specific Antigen / a-1 Antichymotrypsin Complex).
Host Species	Mouse
Immunogen	human total PSA purified from seminal plasma.
Species Reactivity	PSA monoclonal antibodies (5B10D4, 8A9B8, 1G9G8, 4A5D10 and 1A7D4) recognize total PSA, free PSA and ACT- PSA Complex (Prostate Specific Antigen / a-1 Antichymotrypsin Complex).
Conjugate	Unconjugated

Applications

These antibodies are perfect choice for in vitro diagnostic assay development. And they are prepared for non-clinical research use only. The recommended pairs are based on our laboratory results.

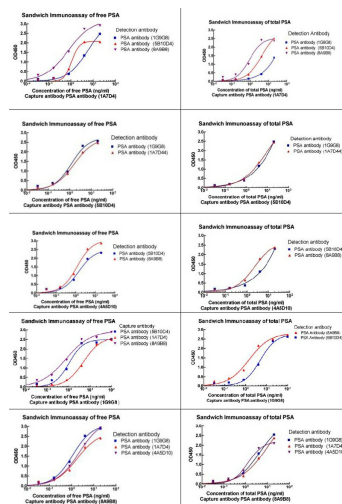
Detection	Capture				
	A01663 (5B10D4)	A01664 (8A9B8)	A01667 (1G9G8)	A01670 (4A5D10)	A01673 (1A7D4)
A01663 (5B10D4)		+++	++	++	+++
A01664 (8A9B8)	-		-	+++	-
A01667 (1G9G8)	-	+++		-	-
A01670 (4A5D10)	-	-	-		-
A01673 (1A7D4)	++	-	++	++	

The above data was achieved by Sandwich ELISA. '+' means reaction and '-' means no reaction. The number of '+' represents reaction intensity.

Properties

Form	Liquid
Storage Buffer	in PBS buffer, pH 7.4, containing 0.02% sodium azide.
Concentration	0.5 mg/mL
Storage Instructions	For long term storage, aliquot and store at -20°C or below. Avoid repeated freezing and thawing cycles.
Purification	Protein A affinity column
Isotype	Mouse IgG1, κ
Clonality	Monoclonal
Clone Id	5B10D4

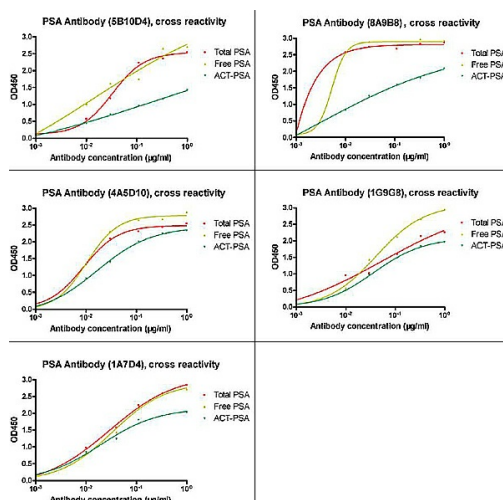
Examples



Antibody pairs analysis of PSA monoclonal antibodies by Sandwich ELISA:

General conditions:

1. Microplate was coated with a capture antibody against PSA, followed by 3 washing cycles.
2. Incubation with free PSA or total PSA followed by 3 washing cycles.
3. Incubation with peroxidase conjugated detection antibody against PSA, followed by 3 washing cycles.
4. Colorimetric determination of bound peroxidase activity.



Cross-reactivity of PSA monoclonal antibodies by Indirect ELISA:

General conditions:

1. Microplate was coated with total PSA, free PSA, ACT-PSA respectively, followed by 3 washing cycles.
2. Incubation with mouse anti-PSA followed by 3 washing cycles.
3. Incubation with goat anti-mouse IgG conjugated to peroxidase, followed by 3 washing cycles.
4. Colorimetric determination of bound peroxidase activity.

Background

Target Background : Prostate-specific antigen (PSA) is also known as kallikrein III, seminin, semenogelase, γ -seminoprotein and P-30 antigen. It is a serine protease enzyme produced by the cells of the prostate gland. Most of PSA in the blood which is bound to serum proteins is known as total PSA, while a small amount which is not protein bound to is called free PSA. PSA liquifies the semen in the seminal coagulum and allows sperm to swim freely. PSA is often elevated in the presence of prostate cancer and in other prostate disorders. A blood test to measure PSA is considered to be the most effective test currently available for the early detection of prostate cancer. Furthermore, rising levels of PSA over time are associated with both localized and metastatic prostate cancer (CaP). GenScript Human PSA Antibody, mAb, Mouse is produced from the hybridoma resulting from fusion of SP2/0-Ag14 myeloma and B-lymphocytes obtained from mouse immunized with human total PSA purified from seminal plasma.

Synonyms : PSA Antibody (5B10D4), mAb, Mouse;

For laboratory research use only. Direct human use, including taking orally and injection and clinical use are forbidden.