

Rev03
Update: Dec,14,2021

DATASHEET

SSTR2 antibody, pAb, Rabbit

Cat. No.: A01591

Overview

Specificity	GenScript Rabbit SSTR2 Antibody detects human endogenous levels of SSTR2. It is predicted to react with mouse and rat SSTR2 protein according to sequence homology. Positive Control: A549 and MCF-7
Host Species	Rabbit
Immunogen	KLH-coupled synthetic peptide within residues 130-180 of human SSTR2 (Swiss Prot: P30874)
Species Reactivity	Human
Conjugate	Unconjugated

Applications

Working concentrations for specific applications should be determined by the investigator. The appropriate concentrations may be affected by secondary antibody affinity, antigen concentration, the sensitivity of the method of detection, temperature, the length of the incubations, and other factors. The suitability of this antibody for applications other than those listed below has not been determined. The following concentration ranges are recommended starting points for this product.

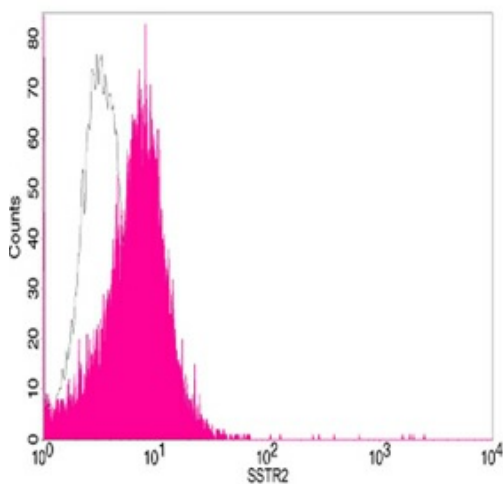
Application	Recommended Usage
Western blot	0.5-1 µg/ml
Flow cytometry	1-3 µg for 1×10^6 cells
Other applications	User-optimized

Properties

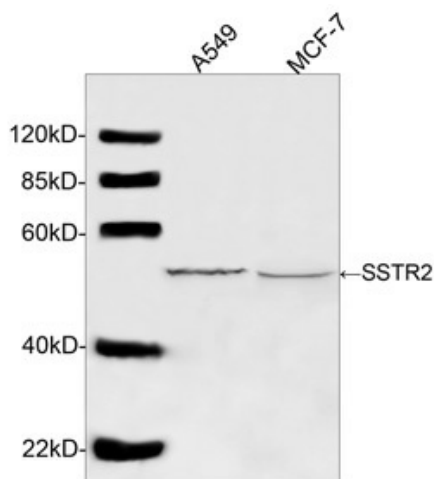
Form	Lyophilized
Storage Buffer	lyophilized with PBS, pH 7.4, containing 0.02% sodium azide
Reconstitution	Reconstitute the lyophilized powder with deionized water (or equivalent) to a final concentration of 0.5 mg/mL.

Storage Instructions	The antibody is stable in lyophilized form if stored at -20°C or below. The reconstituted antibody can be stored for 2-3 weeks at 2-8°C. For long term storage, aliquot and store at -20°C or below. Avoid repeated freezing and thawing cycles.
Purification	Affinity chromatography
Isotype	Rabbit IgG
Clonality	Polyclonal
Clone Id	Not applicable

Examples



Flow cytometric analysis of Romas cells using SSTR2 antibody, pAb, Rabbit (GenScript, A01591; shaded histogram) or with an isotype control antibody (GenScript, A01008; open histogram), followed by R-PE conjugated anti-rabbit IgG.



Western blot analysis of cell lysates using SSTR2 Antibody (GenScript, A01591, 1 µg/ml). The signal was developed with IRDye™ 800 Conjugated Goat Anti-Rabbit IgG. Predicted Size: 41 KD. Observed Size: 55 KD.

Background

Target Background : Somatostatin receptor type 2 (SSTR2) is a receptor for somatostatins-14 and -28. This receptor is coupled via pertussis toxin sensitive G proteins to incur inhibition of adenylyl cyclase. In addition, it stimulates phosphotyrosine phosphatase and PLC via pertussis toxin insensitive as well as sensitive G proteins. In RIN-5F cells, this receptor inhibits calcium entry by suppressing voltage dependent calcium-channels. GenScript SSTR2 Antibody is developed in rabbit using a KLH-coupled synthetic peptide within residues 130–180 of human SSTR2 (Swiss Prot: P30874).

Synonyms : SS2R Antibody;

For laboratory research use only. Direct human use, including taking orally and injection and clinical use are forbidden.