

THE™ alpha Tubulin Antibody, mAb, Mouse

Cat. No.: A01410

Overview

Specificity	THE™ alpha Tubulin Antibody, mAb, Mouse reacts with mouse, human, hamster, monkey, and pig α -tubulin. This product has not yet been tested in other species.
Host Species	Mouse
Immunogen	A synthetic peptide (ALEKDYEEVGVSVE) coupled to KLH
Conjugate	Unconjugated

Applications

Working concentrations for specific applications should be determined by the investigator. The appropriate concentrations may be affected by secondary antibody affinity, antigen concentration, the sensitivity of the method of detection, temperature, the length of the incubations, and other factors. The suitability of this antibody for applications other than those listed below has not been determined. The following concentration ranges are recommended starting points for this product.

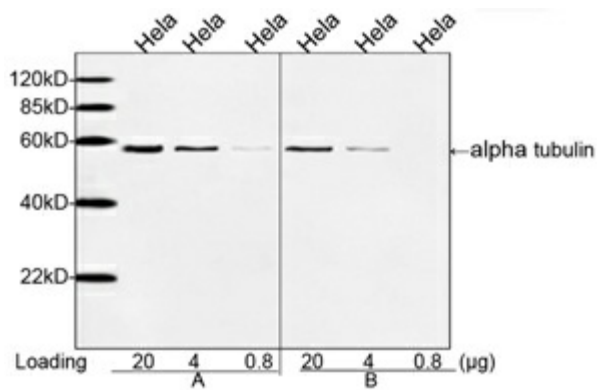
Application	Recommended Usage
ELISA	0.05-0.2 μ g/ml
Western Blot	0.1-1.0 μ g/ml
Immunocytochemistry/Immunofluorescence (ICC/IF)	1 μ g/ml

Properties

Form	Lyophilized
Storage Buffer	lyophilized with PBS, pH 7.4, containing 0.02% sodium azide
Reconstitution	Reconstitute the lyophilized powder with deionized water (or equivalent) to an final concentration of 0.5 mg/mL.
Storage Instructions	The lyophilized product remains stable for up to 1 year at -20 °C from the date of receipt. Upon reconstitution, it can be stored for 2-3 weeks at 2-8 °C or for up to 12 months at -20 °C or below. Avoid repeated freezing and thawing cycles.

Purification	Protein A affinity column
Isotype	Mouse IgG2b, κ
Clonality	Monoclonal
Clone ID	1F4E3
Note	GenScript can offer this product per customer's request including product size, buffer components, etc.

Examples



Comparison of THE™ alpha Tubulin Antibody, mAb, Mouse (GenScript, A01410) with Mouse Anti-alpha Tubulin mAb (Competitor A) by Western blot.

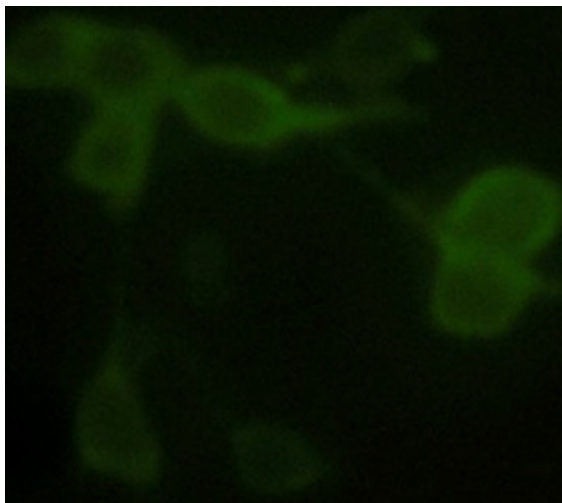
A: THE™ alpha Tubulin Antibody, mAb, Mouse (GenScript, A01410, 1 μ g/ml)

B: Mouse Anti-alpha Tubulin Monoclonal Antibody (Clone: DM1A, 1 μ g/ml)

The signal was developed with IRDye™ 800 Conjugated affinity Purified Goat Anti-Mouse IgG

Predicted Size: 50 kD

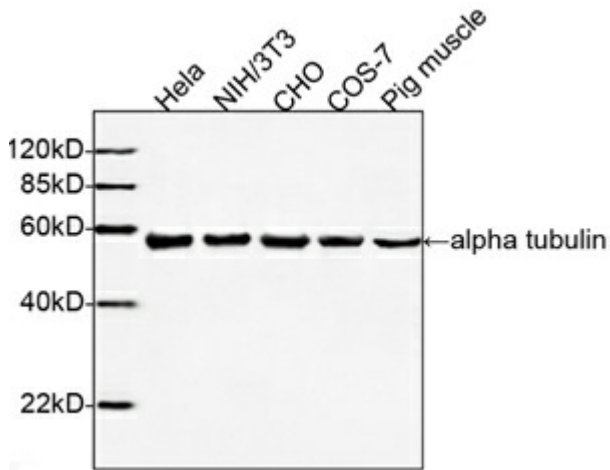
Observed Size: 50 kD



Immunofluorescence analysis of 293 cells

Primary antibody: 1 μ g/ml THE™ Anti-alpha tubulin Monoclonal Antibody (Mouse) (GenScript, A01410)

Secondary antibody: Fluorescein Conjugated Affinity Purified Anti-Mouse IgG (H&L) (Goat) (Rockland, 1:1,000, 610-102-121)



Western blot analysis of cell and tissue lysates using THE™ alpha Tubulin Antibody, mAb, Mouse (GenScript, A01410, 1 µg/ml). The signal was developed with IRDye™ 800 Conjugated affinity Purified Goat Anti-Mouse IgG. Predicted Size: 50 kD. Observed Size: 50 kD.

Background

Target Background : Tubulin is one of several members of a small family of globular proteins. The most common members of the tubulin family are α -tubulin and β -tubulin, the proteins that make up microtubules. Microtubules are obligate proteinaceous elements found in nearly all eukaryotic cells. The availability of monoclonal antibodies to α -tubulin uses as a common housekeeping protein and serves as a specific and useful tool in studying proper interpretation of western blots.

Synonyms : α -tubulin mAb;

For laboratory research use only. Direct human use, including taking orally and injection and clinical use are forbidden.

生产商：南京金斯瑞生物科技有限公司 江苏省南京市江宁区科学园雍熙路28号

Manufacturer: Nanjing GenScript Biotech Co., Ltd. No. 28Yongxi Road, Jiangning District, Nanjing, Jiangsu, China