

Rev05
Update: Nov,03,2023

DATASHEET

GFP Antibody, pAb, Rabbit

Cat. No.: A01388

Overview

| | |
|---------------------|---|
| Specificity | GenScript Rabbit Anti-GFP Polyclonal Antibody reacts with GFP fusion proteins. The antibody also reacts with other variants of GFP, such as CFP, YFP, eGFP and GFPuv. |
| Host Species | Rabbit |
| Immunogen | Purified recombinant full-length GFP protein |
| Conjugate | Unconjugated |

Applications

Working concentrations for specific applications should be determined by the investigator. The appropriate concentrations may be affected by secondary antibody affinity, antigen concentration, the sensitivity of the method of detection, temperature, the length of the incubations, and other factors. The suitability of this antibody for applications other than those listed below has not been determined. The following concentration ranges are recommended starting points for this product.

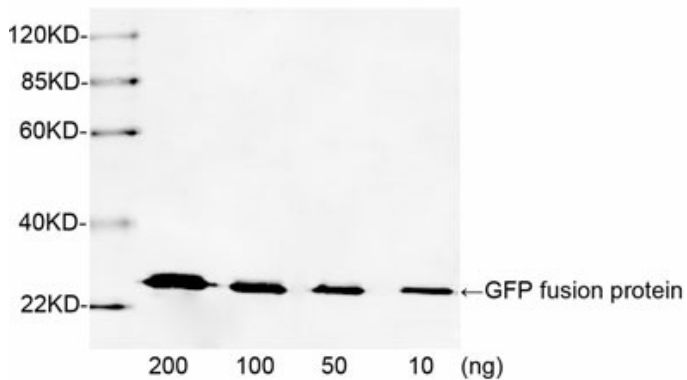
| Application | Recommended Usage |
|--------------------------|--------------------------|
| Immunoprecipitation (IP) | 2-10 µg/mg of lysate |
| ELISA | 0.05-0.2 µg/ml |
| Western Blot | 0.5-1 µg/ml |

Properties

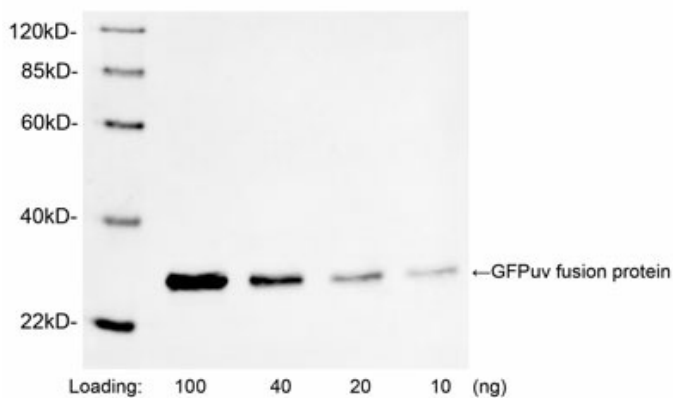
| | |
|-----------------------------|--|
| Form | Lyophilized |
| Storage Buffer | lyophilized with PBS, pH 7.4, containing 0.02% sodium azide |
| Reconstitution | Reconstitute the lyophilized powder with deionized water (or equivalent) to an final concentration of 0.5 mg/mL. |
| Storage Instructions | The lyophilized product remains stable for up to 1 year at -20 °C from the date of receipt. Upon reconstitution, it can be stored for 2-3 weeks at 2-8 °C or for up to 12 months at -20 °C or below. Avoid repeated freezing and thawing cycles. |

| | |
|---------------------|-------------------------|
| Purification | Affinity chromatography |
| Isotype | Rabbit IgG |
| Clonality | Polyclonal |
| Clone ID | Not applicable |

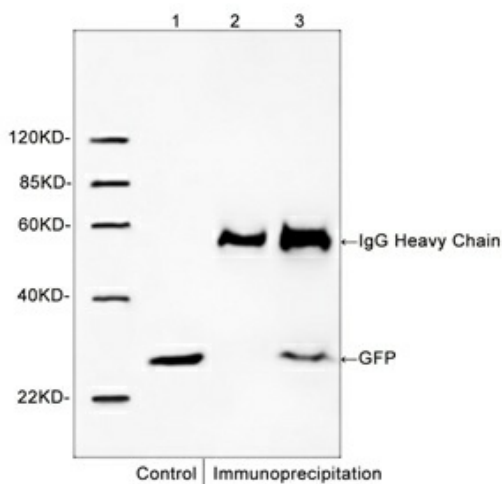
Examples



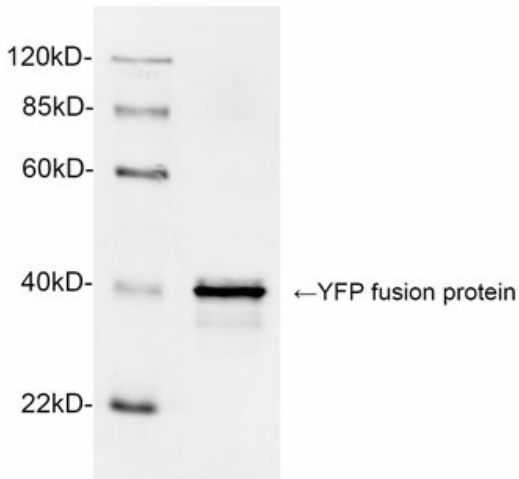
Western blot analysis of GFP fusion protein using 1 µg/ml Rabbit Anti-GFP Polyclonal Antibody (GenScript, A01388). The signal was developed with IRDye™ 800 Conjugated Goat Anti-Rabbit IgG.
 Predicted Size: 27 KD
 Observed Size: 27 KD



Western blot analysis of GFPuv fusion protein using 1 µg/ml Rabbit Anti-GFP Polyclonal Antibody (GenScript, A01388). The signal was developed with IRDye™ 800 Conjugated Goat Anti-Rabbit IgG.
 Predicted Size: 27 KD
 Observed Size: 27 KD



Western blot analysis of immunoprecipitates from lysate expressing GFP using Rabbit Anti-GFP Polyclonal Antibody (GenScript, A01388).
 Lane 1: Input control material for lysate expressing GFP protein
 Lane 2: Negative control – IP with isotype control antibody (GenScript, A01008)
 Lane 3: Immunoprecipitation with Rabbit Anti-GFP Polyclonal Antibody (GenScript, A01388).



Western blot analysis of YFP fusion protein using 1 µg/ml Rabbit Anti-GFP Polyclonal Antibody (GenScript, A01388). The signal was developed with IRDye™ 800 Conjugated Goat Anti-Rabbit IgG. Predicted Size: 40 KD. Observed Size: 40 KD.

Background

Target Background : Green fluorescence protein (GFP) is a 27 kDa protein derived from jellyfish *Aequorea victoria*. It emits green light (emission peak at a wavelength of 509 nm) when excited by blue light (excitation peak at a wavelength of 395 nm). GFP has become a very useful tool as a fusion protein to report gene expression, trace cell lineage and define subcellular protein localizations. YFP differs from GFP due to a mutation at T203Y. The antibodies raised against full-length GFP should also detect YFP and other variants. GenScript Rabbit Anti-GFP Polyclonal Antibody is developed in rabbit using purified recombinant full-length GFP protein. This polyclonal antibody is highly purified from rabbit antiserum by immunoaffinity chromatography.

Synonyms : Rabbit Anti-GFP pAb;

For laboratory research use only. Direct human use, including taking orally and injection and clinical use are forbidden.

生产商：南京金斯瑞生物科技有限公司 江苏省南京市江宁区科学园雍熙路28号

Manufacturer: Nanjing GenScript Biotech Co., Ltd. No. 28Yongxi Road, Jiangning District, Nanjing, Jiangsu, China