

Rev03
Update: Dec,14,2021

DATASHEET

β -Tubulin III Antibody, pAb, Rabbit

Cat. No.: A01203

Overview

Specificity	GenScript Rabbit Anti- β -Tubulin III Polyclonal Antibody detects endogenous levels of human, rat and mouse β -tubulin III protein. Sequence homology predicts that it will also react with bovine, chicken, cynomolgus monkey. African clawed frog, and disc abalone β -tubulin III proteins.
Host Species	Rabbit
Immunogen	Synthetic peptide (KLH-coupled) within residues 150-200 of human β -tubulin III protein (Swiss Prot: Q13509)
Species Reactivity	Human, mouse, and rat. This product has not yet been tested with other species. Reactivity with other β -Tubulin had not been tested yet.
Conjugate	Unconjugated

Applications

Working concentrations for specific applications should be determined by the investigator. The appropriate concentrations may be affected by secondary antibody affinity, antigen concentration, the sensitivity of the method of detection, temperature, the length of the incubations, and other factors. The suitability of this antibody for applications other than those listed below has not been determined. The following concentration ranges are recommended starting points for this product.

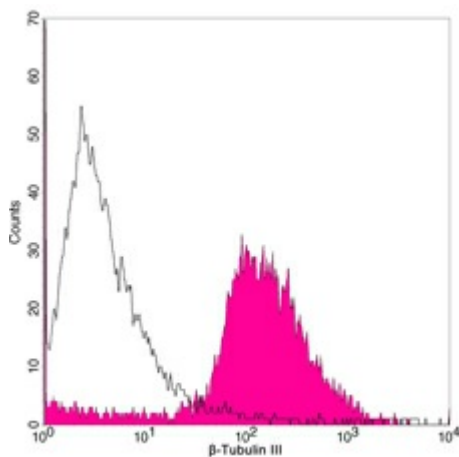
Application	Recommended Usage
ELISA	0.05-0.2 μ g/ml
Western Blot	0.5-1 μ g/ml
Immunohistochemistry	5-10 μ g/ml
Flow cytometry	1-3 μ g for 1×10^6 cells
Other applications	User-optimized

Properties

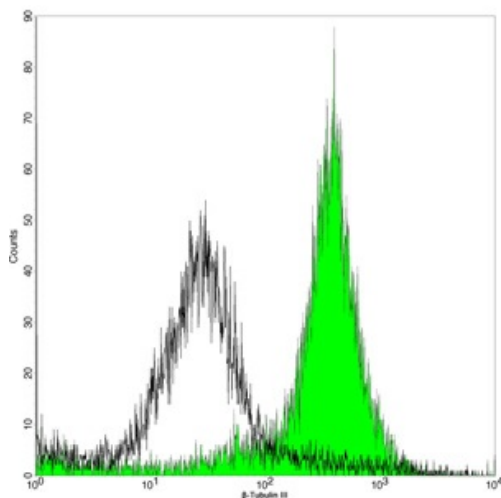
Form	Lyophilized
-------------	-------------

Storage Buffer	lyophilized with PBS, pH 7.4, containing 0.02% sodium azide
Reconstitution	Reconstitute the lyophilized powder with deionized water (or equivalent) to an final concentration of 0.5 mg/mL.
Storage Instructions	The antibody is stable in lyophilized form if stored at -20°C or below. The reconstituted antibody can be stored for 2-3 weeks at 2-8°C. For long term storage, aliquot and store at -20°C or below. Avoid repeated freezing and thawing cycles.
Purification	Affinity chromatography
Isotype	Rabbit IgG
Clonality	Polyclonal
Clone Id	Not applicable
Note	Small volumes of antibody will occasionally become trapped in the seal of the product vial during shipment and storage. Before use, briefly centrifuge the vial to dislodge any liquid in the container's cap.

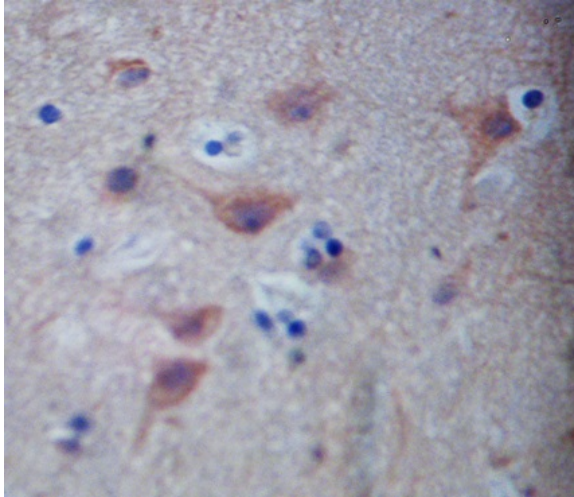
Examples



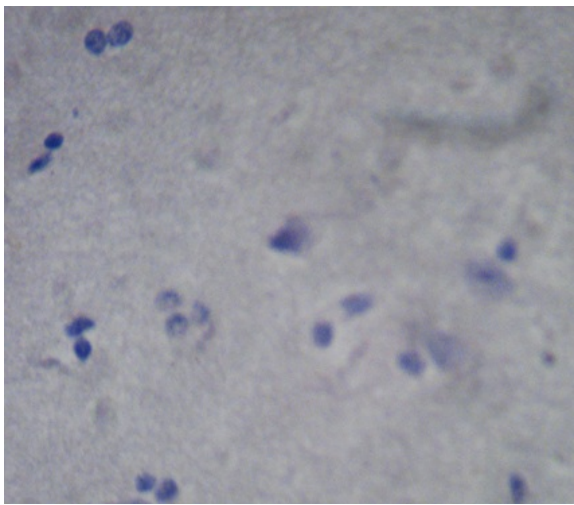
Flow cytometric analysis of HeLa cells using Rabbit Anti- β -Tubulin III Polyclonal Antibody (GenScript, A01203; shaded histogram) or with an isotype control antibody (GenScript, A01008; open histogram), followed by R-PE conjugated anti-rabbit IgG.



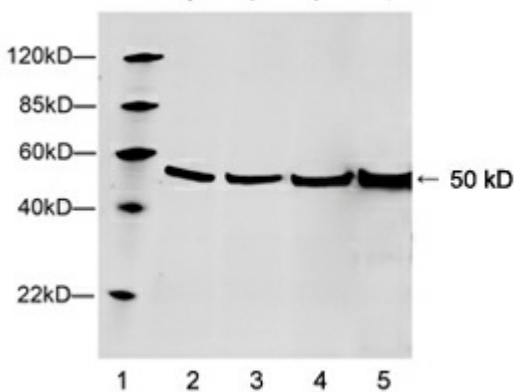
Flow cytometric analysis of Jurkat cells using Rabbit Anti- β -Tubulin III Polyclonal Antibody (GenScript, A01203; shaded histogram) or with an isotype control antibody (GenScript, A01008; open histogram), followed by FITC conjugated anti-rabbit IgG.



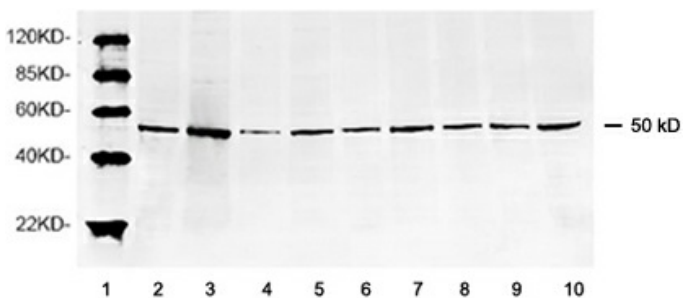
Immunohistochemistry analysis of human brain tissue slide (Paraffin embedded) using Rabbit Anti- β -Tubulin III Polyclonal Antibody (GenScript, A01203)



Immunohistochemistry negative control analysis of human brain tissue slide (Paraffin embedded) using Purified Rabbit IgG (Whole Molecule) Control (GenScript, A01008)



Lane 1: Marker
 Lane 2: Hela cell lysate
 Lane 3: HEK293 cell lysate
 Lane 4: Mouse brain tissue lysate
 Lane 5: Rat brain tissue lysate
 Western blot analysis of lysates using 1 μ g/ml Rabbit Anti- β -Tubulin III Polyclonal Antibody (GenScript, A01203)
 The signal was developed with IRDye™ 800 Conjugated Goat Anti-Rabbit IgG.



Lane 1: Marker
 Lane 2: Hela cell lysate
 Lane 3: HEK293 cell lysate
 Lane 4: NIH/3T3 cell lysate
 Lane 5: K562 cell lysate
 Lane 6: Ramos cell lysate
 Lane 7: A549 cell lysate
 Lane 8: HepG2 cell lysate

Lane 9: Mouse brain tissue lysate

Lane 10: Rat brain tissue lysate

Western blot analysis of lysates using 1 µg/ml Rabbit Anti-β-Tubulin III Polyclonal Antibody (GenScript, A01203)

The signal was developed with IRDye™ 800 Conjugated Goat Anti-Rabbit IgG.

Background

Target Background : Tubulin III belongs to the tubulin family. Tubulin is the major constituent of microtubules. It forms dimers of alpha and beta chains. One mole of tubulin binds to two moles of GTP, one at an exchangeable site on the beta chain and one at a non-exchangeable site on the alpha chain. Tubulin III contains a highly acidic C-terminal region which can bind cations such as calcium. It is abundant in the central and peripheral nervous systems. GenScript Rabbit Anti Tubulin III Polyclonal Antibody is developed in rabbit hosts using a KLH-coupled synthetic peptide within residues 150-200 of human Tubulin III protein (Swiss Prot: Q13509).

Synonyms : Rabbit Anti-Beta-Tubulin III pAb;

For laboratory research use only. Direct human use, including taking orally and injection and clinical use are forbidden.