

Rev05
Update: Nov,03,2023

DATASHEET

Ty1-tag Antibody, pAb, Rabbit

Cat. No.: A01004

Overview

Specificity	This Antibody recognizes both Ty1 tagged fusion proteins.
Host Species	Rabbit
Immunogen	Ty1-tag epitope peptide conjugated to KLH
Conjugate	Unconjugated

Applications

Working concentrations for specific applications should be determined by the investigator. The appropriate concentrations may be affected by secondary antibody affinity, antigen concentration, the sensitivity of the method of detection, temperature, the length of the incubations, and other factors. The suitability of this antibody for applications other than those listed below has not been determined. The following concentration ranges are recommended starting points for this product.

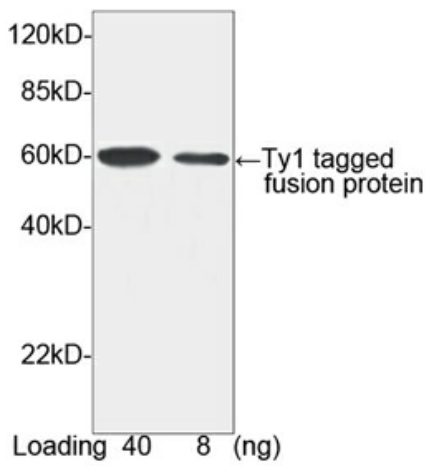
Application	Recommended Usage
ELISA	0.05-0.2 µg/ml
Western Blot	0.2-2.0 µg/ml
Immunoprecipitation (IP)	2-5 µg/ml

Properties

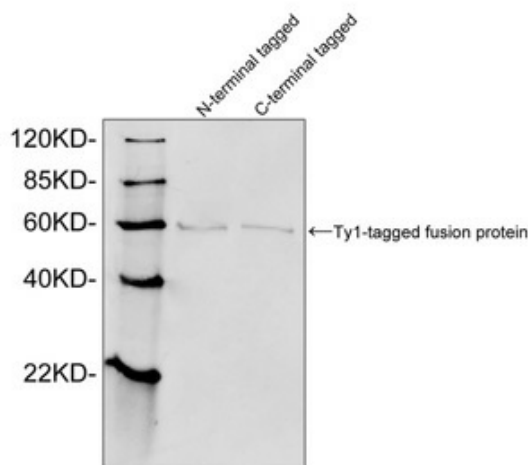
Form	Lyophilized
Storage Buffer	Lyophilized with PBS, pH 7.4, containing 0.02% sodium azide
Reconstitution	Reconstitute the lyophilized powder with deionized water (or equivalent) to a final concentration of 0.5 mg/ml.
Storage Instructions	The lyophilized product remains stable for up to 1 year at -20 °C from the date of receipt. Upon reconstitution, it can be stored for 2-3 weeks at 2-8 °C or for up to 12 months at -20 °C or below. Avoid repeated freezing and thawing cycles.
Purification	Affinity chromatography

Isotype	Rabbit IgG
Clonality	Polyclonal
Clone ID	Not applicable
Note	Small volumes of antibody will occasionally become entrapped in the seal of the product vial during shipment and storage. Before use, briefly centrifuge the vial to dislodge any liquid in the container's cap.

Examples



Western blot analysis of Ty1 tagged fusion protein using Ty1-tag Antibody, pAb, Rabbit (GenScript, A01004, 1 µg/ml)
 The signal was developed with Goat Anti-Rabbit IgG (H&L) [HRP] Polyclonal Antibody (GenScript, A00098) and LumiSensor™ HRP Substrate Kit (GenScript, L00221)
 Predicted Size: 60 kD
 Observed Size: 60 kD



Western blot analysis of Ty1 tagged fusion proteins expressed in E. coli cell lysate using Ty1-tag Antibody (GenScript, A01004, 1 µg/ml)
 The signal was developed with IRDye™ 800 Conjugated Goat Anti-Rabbit IgG.

Background

Target Background : Well-characterized antibodies for epitope tags are common in the study of protein expression in various systems. GenScript Rabbit Anti- Ty1-tag Polyclonal Antibody is developed in rabbit using a KLH-coupled synthetic peptide.

Synonyms : Rabbit Anti-Ty1-tag pAb;

For laboratory research use only. Direct human use, including taking orally and injection and clinical use are forbidden.

生产商：南京金斯瑞生物科技有限公司 江苏省南京市江宁区科学园雍熙路28号

Manufacturer: Nanjing GenScript Biotech Co., Ltd. No. 28Yongxi Road, Jiangning District, Nanjing, Jiangsu, China