

Rev03  
Update: Dec,14,2021

**DATASHEET**

# CXCR4 Antibody, pAb, Rabbit

Cat. No.: A00995

## Overview

<b>Specificity</b>	GenScript Rabbit Anti-CXCR4 Polyclonal Antibody detects endogenous levels of human and mouse CXCR4. Positive Control: Hela, HEK293.
<b>Host Species</b>	Rabbit
<b>Immunogen</b>	KLH-coupled synthetic peptide from N-terminal of human CXCR4 (Swiss Prot: P61073)
<b>Species Reactivity</b>	Human and mouse. This product has not been tested for other species yet.
<b>Conjugate</b>	Unconjugated

## Applications

Working concentrations for specific applications should be determined by the investigator. The appropriate concentrations may be affected by secondary antibody affinity, antigen concentration, the sensitivity of the method of detection, temperature, the length of the incubations, and other factors. The suitability of this antibody for applications other than those listed below has not been determined. The following concentration ranges are recommended starting points for this product.

<b>Application</b>	<b>Recommended Usage</b>
Western Blot	0.5-1.0 µg/ml
Other applications	User-optimized

## Properties

<b>Form</b>	Lyophilized
<b>Storage Buffer</b>	Lyophilized with PBS, pH 7.4, containing 0.02% sodium azide
<b>Reconstitution</b>	Reconstitute the lyophilized powder with deionized water (or equivalent) to a final concentration of 0.5 mg/ml.
<b>Storage Instructions</b>	The antibody is stable in lyophilized form if stored at -20°C or below. The reconstituted antibody can be stored for 2-3 weeks at 2-8°C. For long term storage, aliquot and store at -20°C or below. Avoid repeated freezing and thawing cycles.
<b>Purification</b>	Affinity chromatography

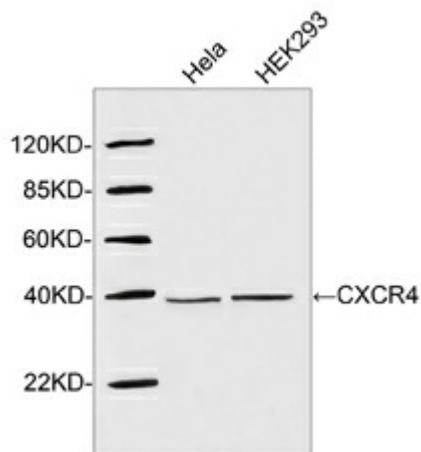
**GenScript USA, Inc.**

860 Centennial Ave. Piscataway, NJ 08854

Tel: 1-732-885-9188

Isotype	Rabbit IgG
Clonality	Polyclonal
Clone Id	Not applicable

## Examples



Western blot analysis of cell lysates using 1 µg/ml Rabbit Anti-CXCR4 Polyclonal Antibody (GenScript, A00995)

The signal was developed with IRDye™ 800 Conjugated Goat Anti-Rabbit IgG.

Predicted Size: 40 KD

Observed Size: 40 KD

## Background

**Target Background :** CXCR4 is one member of G-protein coupled receptor that contains seven transmembrane spanning. CXCR4 is a principal coreceptor for T cell tropic strains of HIV1 fusion and entry of human white blood cells. It is also required for the infection by dual-tropic strains of HIV1 and mediates CD4 independent infection by HIV2. Chemokine SDF1 is the ligand for CXCR4 that prevents infection by T tropic HIV. CXCR4 is highly expressed in brain, heart, white blood cells, vascular endothelial cells, and umbilical cord endothelial cells. GenScript Rabbit Anti-CXCR4 Polyclonal Antibody is developed in rabbit using a KLH-coupled synthetic peptide from N-terminal of human CXCR4 (Swiss Prot: P61073).

**Synonyms :** Rabbit Anti-C-X-C chemokine receptor type 4 pAb;

**For laboratory research use only. Direct human use, including taking orally and injection and clinical use are forbidden.**