

Rev04
Update: Oct,19,2022

DATASHEET

α -Actin-1 Antibody, pAb, Rabbit

Cat. No.: A00885

Overview

Specificity	GenScript Rabbit Anti-Alpha-Actin-1 Polyclonal Antibody reacts with human, mouse, rat, cow, pig, rabbit, and some fish species. It has not yet been tested with other species.
Host Species	Rabbit
Immunogen	Synthetic peptide GQVITIGNERFR conjugated to KLH
Conjugate	Unconjugated

Applications

Working concentrations for specific applications should be determined by the investigator. The appropriate concentrations may be affected by secondary antibody affinity, antigen concentration, the sensitivity of the method of detection, temperature, the length of the incubations, and other factors. The suitability of this antibody for applications other than those listed below has not been determined. The following concentration ranges are recommended starting points for this product.

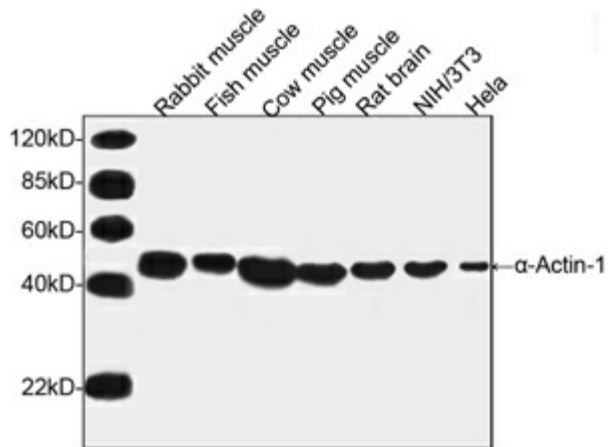
Application	Recommended Usage
Western Blot	0.1-1.0 μ g/ml
Western Blot	1:100-1:1,000

Properties

Form	Liquid
Storage Buffer	1 \times PBS, pH 7.4, containing 0.02% sodium azide
Concentration	0.5 mg/ml
Reconstitution	Reconstitute the lyophilized product with deionized water (or equivalent) to make antibody concentration of 0.5 mg/ml, if the antibody is in lyophilized form.
Storage Instructions	The antibody is stable for 2-3 weeks if stored at 2-8°C. For long term storage, aliquot and store at -20°C or below. Avoid repeated freezing and thawing cycles.

Purification	Affinity chromatography
Isotype	Rabbit IgG
Clonality	Polyclonal
Clone ID	Not applicable

Examples

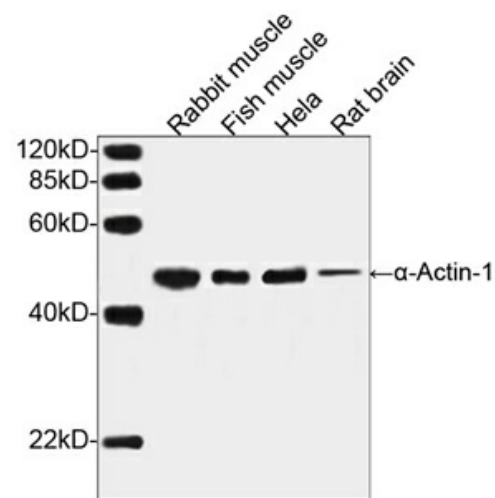


Western blot analysis of tissue and cell lysates using α -Actin-1 Antibody, pAb, Rabbit (GenScript, A00885, 1 μ g/ml)

The signal was developed with Goat Anti-Rabbit IgG (H&L) [HRP] Polyclonal Antibody (GenScript, A00098, 1:10,000) and LumiSensor™ HRP Substrate Kit (GenScript, L00221)

Predicted Size: 42 kD

Observed Size: 42 kD



Western blot analysis of tissue and cell lysates using α -Actin-1 Antibody, pAb, Rabbit (GenScript, A00885, 1 μ g/ml)

The signal was developed with with One-Step Western™ Complete Kit (Rabbit) (GenScript, L00204C)

Predicted Size: 42 kD

Observed Size: 42 kD

Background

Target Background : The two major cytoskeletal proteins implicated in cell motility are actin and myosin. Actin and myosin are involved in a myriad of cellular processes including locomotion, secretion, cytoplasmic streaming, phagocytosis, and cytokinesis. GenScript Rabbit Anti-Alpha-Actin-1 Polyclonal Antibody is developed in rabbit hosts using a synthetic peptide conjugated to KLH.

Synonyms : Rabbit Anti- α -Actin-1 pAb;

For laboratory research use only. Direct human use, including taking orally and injection and clinical use are forbidden.