

Rev05  
Update: Nov,03,2023

**DATASHEET**

# THE™ beta Actin Antibody, mAb, Mouse

Cat. No.: A00702

## Overview

<b>Specificity</b>	THE™ beta Actin Antibody, mAb, Mouse reacts with mouse, rabbit, chicken, human, hamster, cow, goat, fish, and pig. It has not yet been tested in other species.
<b>Host Species</b>	Mouse
<b>Immunogen</b>	A synthetic peptide DDDIAALWDNGSG coupled to KLH
<b>Species Reactivity</b>	Mouse, rabbit, chicken, human, hamster, cow, goat, fish, and pig
<b>Conjugate</b>	Unconjugated

## Applications

Working concentrations for specific applications should be determined by the investigator. The appropriate concentrations may be affected by secondary antibody affinity, antigen concentration, the sensitivity of the method of detection, temperature, the length of the incubations, and other factors. The suitability of this antibody for applications other than those listed below has not been determined. The following concentration ranges are recommended starting points for this product.

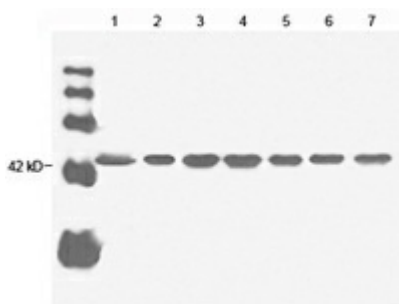
<b>Application</b>	<b>Recommended Usage</b>
ELISA	0.1-1.0 µg/ml
Western Blot	0.1-1.0 µg/ml

## Properties

<b>Form</b>	Lyophilized
<b>Storage Buffer</b>	Lyophilized with PBS, pH 7.4, containing 1% BSA and 0.02% sodium azide. Note: 100 µg, 200 µg (GenScript, A00702), lyophilized with PBS, pH 7.4, containing 0.02% sodium azide, without BSA
<b>Reconstitution</b>	Reconstitute the lyophilized powder with deionized water (or equivalent) to a final concentration of 0.5 mg/ml.

<b>Storage Instructions</b>	The lyophilized product remains stable for up to 1 year at -20 °C from the date of receipt. Upon reconstitution, it can be stored for 2-3 weeks at 2-8 °C or for up to 12 months at -20 °C or below. Avoid repeated freezing and thawing cycles.
<b>Purification</b>	Protein A or G affinity column
<b>Isotype</b>	Mouse IgG2a, $\kappa$
<b>Clonality</b>	Monoclonal
<b>Clone ID</b>	2D1D10

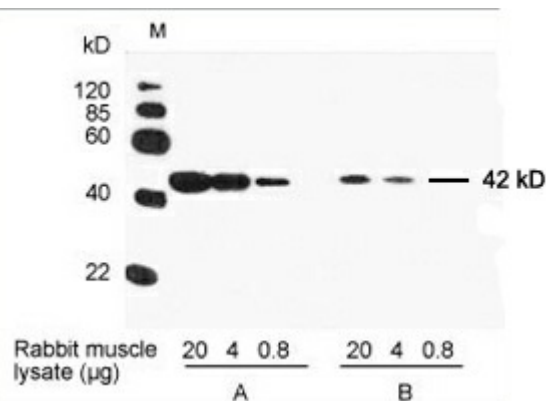
## Examples



Lane 1: 20  $\mu$ g HeLa cell lysate  
 Lane 2: 20  $\mu$ g sp2/0 cell lysate  
 Lane 3: 20  $\mu$ g goat muscle lysate  
 Lane 4: 20  $\mu$ g rabbit muscle lysate  
 Lane 5: 20  $\mu$ g chicken muscle lysate  
 Lane 6: 20  $\mu$ g CHO cell lysate  
 Lane 7: 20  $\mu$ g fish muscle lysate

Primary antibody: 1  $\mu$ g/ml THE™ Anti- $\beta$ -actin Monoclonal Antibody (Mouse) (GenScript, A00702)

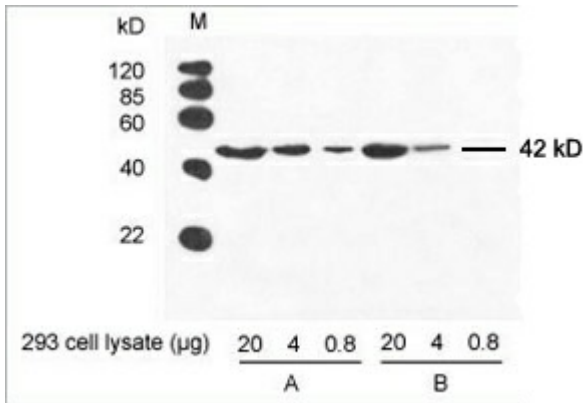
Secondary antibody: Goat Anti-Mouse IgG (H&L) [HRP] Polyclonal Antibody (GenScript, A00160, 1:20,000)



Primary antibody:  
 A. 0.1  $\mu$ g/ml THE™ Anti- $\beta$ -actin Monoclonal Antibody (Mouse) (GenScript, A00702)  
 B. 0.1  $\mu$ g/ml THE™ Anti- $\beta$ -actin Monoclonal Antibody (Mouse) (Company A, clone 8226)

Secondary antibody:  
 Goat Anti-Mouse IgG (H&L) [HRP] Polyclonal Antibody (GenScript, 1:10,000, A00160)

The signal was developed with LumiSensor™ HRP Substrate Kit (GenScript, L00221V500)



Primary antibody:

A. 0.1 µg/ml THE™ Anti-β-actin Monoclonal Antibody (Mouse)  
(GenScript, A00702)

B. 0.1 µg/ml THE™ Anti-β-actin Monoclonal Antibody (Mouse)  
(Company A, clone 8226)

Secondary antibody:

Goat Anti-Mouse IgG (H&L) [HRP] Polyclonal Antibody  
(GenScript, 1:10,000, A00160)

The signal was developed with LumiSensor™ HRP Substrate  
Kit (GenScript, L00221V500)

## Background

**Target Background :** β-actin is one of the six different actin isoforms that have been identified. The actin molecules found in cells of various species and tissues tend to be very similar in their immunological and physical properties. As a consequence, it has been difficult to produce potent antisera against this protein. Therefore, the availability of monoclonal antibodies to β-actin provides a useful and specific tool in the study of the intracellular distribution of β-actin and the static and dynamic aspects of the cytoskeleton.

**Synonyms :** cytoplasmic 1 antibody;

**For laboratory research use only. Direct human use, including taking orally and injection and clinical use are forbidden.**

生产商：南京金斯瑞生物科技有限公司 江苏省南京市江宁区科学园雍熙路28号

Manufacturer: Nanjing GenScript Biotech Co., Ltd. No. 28Yongxi Road, Jiangning District, Nanjing, Jiangsu, China