

Rev04  
Update: Oct,19,2022**DATASHEET**

# SNAP-tag Antibody, pAb, Rabbit

Cat. No.: A00684

## Overview

<b>Specificity</b>	Rabbit Anti-SNAP-tag Polyclonal Antibody specifically reacts with fusion proteins containing the SNAP-tag.
<b>Host Species</b>	Rabbit
<b>Immunogen</b>	Purified recombinant SNAP-tag fusion protein
<b>Conjugate</b>	Unconjugated

## Applications

Working concentrations for specific applications should be determined by the investigator. The appropriate concentrations may be affected by secondary antibody affinity, antigen concentration, the sensitivity of the method of detection, temperature, the length of the incubations, and other factors. The suitability of this antibody for applications other than those listed below has not been determined. The following concentration ranges are recommended starting points for this product.

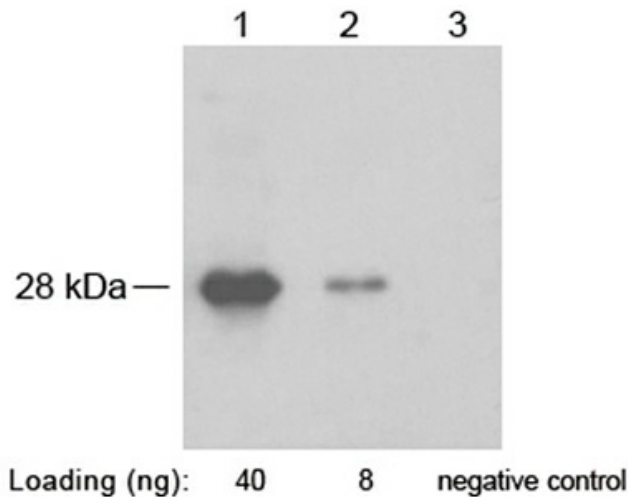
<b>Application</b>	<b>Recommended Usage</b>
ELISA	0.05-0.2 µg/ml
Western Blot	0.1-1.0 µg/ml

## Properties

<b>Form</b>	Lyophilized
<b>Storage Buffer</b>	Lyophilized with PBS, pH 7.4, containing 0.02% sodium azide
<b>Reconstitution</b>	Reconstitute the lyophilized powder with deionized water (or equivalent) to a final concentration of 0.5 mg/ml.
<b>Storage Instructions</b>	The antibody is stable for 2-3 weeks if stored at 2-8°C. For long term storage, aliquot and store at -20°C or below. Avoid repeated freezing and thawing cycles.
<b>Purification</b>	Affinity chromatography
<b>Isotype</b>	Rabbit IgG

Clonality	Polyclonal
Clone ID	Not applicable

## Examples



Lane 1-2: SNAP fusion protein in 293 cell lysate ( $\approx$  28 kD)  
 Lane 3: Negative 293 cell lysate  
 Primary antibody: 1 $\mu$ g/ml Rabbit Anti-SNAP-tag Polyclonal Antibody (GenScript, A00684)  
 Secondary antibody: Goat Anti-Rabbit IgG (H&L) [HRP] Polyclonal Antibody (GenScript, A00098, 1:10,000)  
 The signal was developed with LumiSensor™ HRP Substrate Kit (GenScript, L00221V500)

## Background

**Target Background :** Well-characterized antibodies for epitope tags have been widely used in the study of protein expression in various systems. The SNAP-tag is a self-labeling protein tag that forms a highly stable, covalent thioether bond with fluorophores and other substituted groups on its benzyl guanine substrate. The expressed SNAP-tag fusion proteins can be used in many different assay formats depending upon the labeling substrate employed. GenScript Rabbit Anti-SNAP-tag Polyclonal Antibody is developed in rabbit hosts using purified recombinant SNAP-tag fusion protein. This polyclonal antibody is highly purified from rabbit antiserum by immunoaffinity chromatography.

**Synonyms :** Anti SNAP-tag polyclonal antibody;

**For laboratory research use only. Direct human use, including taking orally and injection and clinical use are forbidden.**