

Rev05
Update: Nov,03,2023

DATASHEET

S1-tag Antibody, pAb, Rabbit

Cat. No.: A00679

Overview

Specificity	This Antibody recognizes both S1 tagged fusion proteins.
Host Species	Rabbit
Immunogen	S1 epitope tag peptide NANNPDWDF conjugated to KLH
Conjugate	Unconjugated

Applications

Working concentrations for specific applications should be determined by the investigator. The appropriate concentrations may be affected by secondary antibody affinity, antigen concentration, the sensitivity of the method of detection, temperature, the length of the incubations, and other factors. The suitability of this antibody for applications other than those listed below has not been determined. The following concentration ranges are recommended starting points for this product.

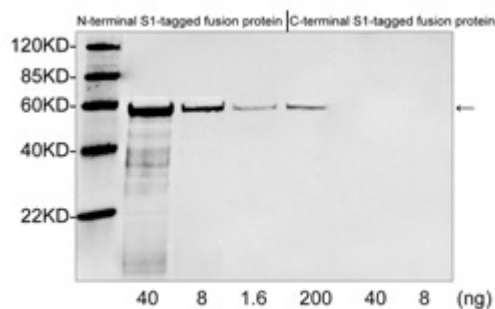
Application	Recommended Usage
ELISA	0.05-0.2 µg/ml
Western Blot	0.1-1.0 µg/ml
Western Blot	1:100-1:1,000

Properties

Form	Liquid
Storage Buffer	1×PBS, pH7.4, containing 0.02% sodium azide
Concentration	1 mg/ml
Storage Instructions	The product remains stable for up to 1 year at -20 °C from the date of receipt. The antibody is stable for 2-3 weeks if stored at 2-8°C. For long term storage, aliquot and store at -20°C or below. Avoid repeated freezing and thawing cycles.
Purification	Affinity chromatography

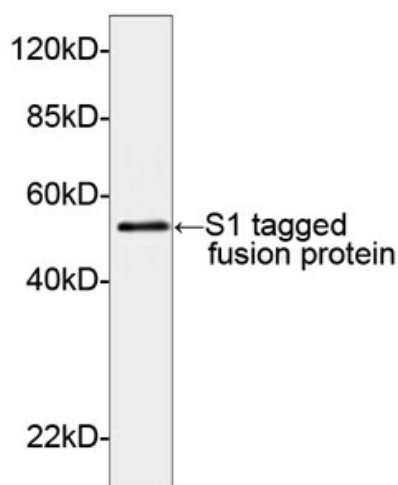
Isotype	Rabbit IgG
Clonality	Polyclonal
Clone ID	Not applicable
Note	Small volume of antibody will occasionally become entrapped in the cap of the vial during shipment and storage. Before use, centrifuge the vial briefly to bring down any liquid in the cap.

Examples



Western blot analysis of S1 tagged fusion proteins expressed in E. coli cell lysate using S1-tag Antibody (GenScript, A00679, 1 $\mu\text{g/ml}$)

The signal was developed with IRDye™ 800 Conjugated Goat Anti-Rabbit IgG.



Western blot analysis of S1-tagged fusion protein using S1-tag Antibody, pAb, Rabbit (GenScript, A00679, 2 $\mu\text{g/ml}$)

The signal was developed with One-Step Western™ Complete Kit (Rabbit) (GenScript, L00204C)

Predicted Size: 48 kD

Observed Size: 48 kD

Background

Target Background : S1 tag is an epitope tag composed of a nine-residue peptide, NANNPDWDF, derived from the hepatitis B virus preS1 region. Epitope tags consisting of short sequences recognized by well-characterized antibodies have been widely used in the study of protein expression in various systems. The Rabbit Anti-S1-tag polyclonal antibody is highly purified from rabbit antiserum by immunoaffinity chromatography.

Synonyms : Rabbit Anti-S1 pAb; Anti-S1-tag pAb

For laboratory research use only. Direct human use, including taking orally and injection and clinical use are forbidden.

生产商：南京金斯瑞生物科技有限公司 江苏省南京市江宁区科学园雍熙路28号

Manufacturer: Nanjing GenScript Biotech Co., Ltd. No. 28Yongxi Road, Jiangning District, Nanjing, Jiangsu, China