

Rev03
Update: Dec,14,2021

DATASHEET

tag-100-tag Antibody, pAb, Rabbit

Cat. No.: A00677

Overview

Specificity	This Antibody recognizes Tag-100 tagged fusion proteins.
Host Species	Rabbit
Immunogen	Tag-100-tag peptide EETARFQPGYRS conjugated to KLH
Conjugate	Unconjugated

Applications

Working concentrations for specific applications should be determined by the investigator. The appropriate concentrations may be affected by secondary antibody affinity, antigen concentration, the sensitivity of the method of detection, temperature, the length of the incubations, and other factors. The suitability of this antibody for applications other than those listed below has not been determined. The following concentration ranges are recommended starting points for this product.

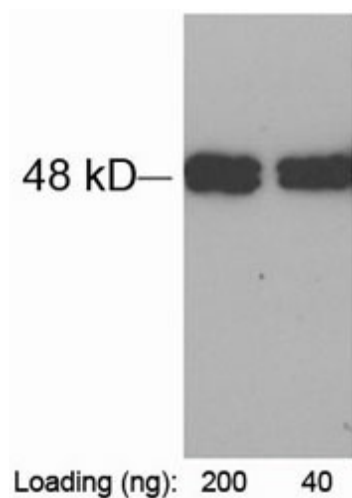
Application	Recommended Usage
ELISA	0.05-0.2 µg/ml
Western Blot	0.1-1.0 µg/ml
Western Blot	1:100-1:1,000
Other applications	User-optimized

Properties

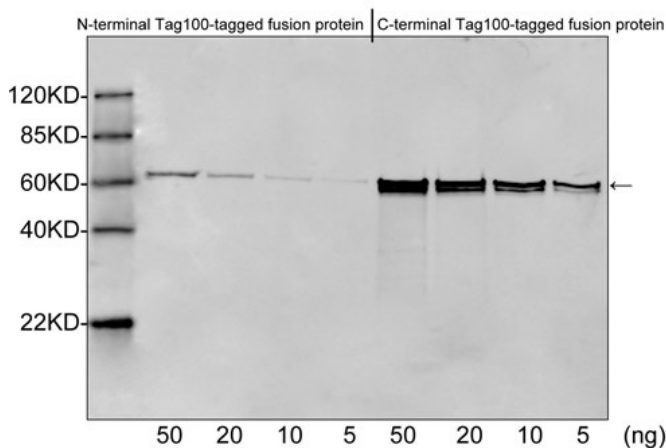
Form	Liquid
Storage Buffer	1×PBS, pH7.4, containing 0.02% sodium azide
Concentration	1 mg/ml
Storage Instructions	The antibody is stable for 2-3 weeks if stored at 2-8°C. For long term storage, aliquot and store at -20°C or below. Avoid repeated freezing and thawing cycles.
Purification	Affinity chromatography

Isotype	Rabbit IgG
Clonality	Polyclonal
Clone Id	Not applicable
Note	Small volume of antibody will occasionally become entrapped in the cap of the vial during shipment and storage. Before use, centrifuge the vial briefly to bring down any liquid in the cap.

Examples



Loading: tag-100-tag fusion protein expressed in *E. coli* cell lysate
 Antibody: 1 µg/ml Rabbit Anti-tag-100-tag Polyclonal Antibody (GenScript, A00677)
 The result was developed with One-Step Western™ Complete Kit (Rabbit) (GenScript, L00204C)



Western blot analysis of Tag-100 tagged fusion proteins expressed in *E. coli* cell lysate using Rabbit Anti-Tag-100-tag Polyclonal Antibody (GenScript, A00677, 1 µg/ml) The signal was developed with IRDye™ 800 Conjugated Goat Anti-Rabbit IgG.

Background

Target Background : Well-characterized antibodies against short-sequence epitope tags are common in the study of protein expression in several different expression systems. Tag-100 tag is an epitope tag composed of a 12-residue peptide, EETARFQPGYRS, derived from the C-termini of mammalian MAPK/ERK kinases.

Synonyms : Rabbit Anti-tag-100-tag pAb;

For laboratory research use only. Direct human use, including taking orally and injection and clinical use are forbidden.