

Rev05  
Update: Nov,03,2023**DATASHEET**

# CBP-tag Antibody, pAb, Rabbit

Cat. No.: A00635

## Overview

<b>Specificity</b>	GenScript CBP-tag Antibody recognizes CBP tagged fusion proteins.
<b>Host Species</b>	Rabbit
<b>Immunogen</b>	A synthetic CBP tag peptide KRRWKKNFIAVSAANRFKKISSSGAL conjugated to KLH
<b>Species Reactivity</b>	Mouse, rat, bovine and rabbit
<b>Conjugate</b>	Unconjugated

## Applications

Working concentrations for specific applications should be determined by the investigator. The appropriate concentrations may be affected by secondary antibody affinity, antigen concentration, the sensitivity of the method of detection, temperature, the length of the incubations, and other factors. The suitability of this antibody for applications other than those listed below has not been determined. The following concentration ranges are recommended starting points for this product.

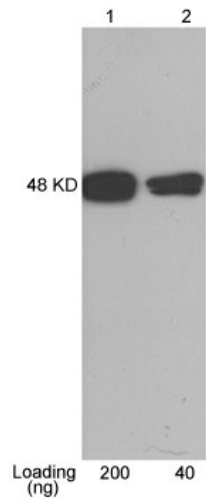
<b>Application</b>	<b>Recommended Usage</b>
ELISA	0.05-0.2 µg/ml
Western Blot	0.1-1.0 µg/ml
Western Blot	1:100-1:1,000

## Properties

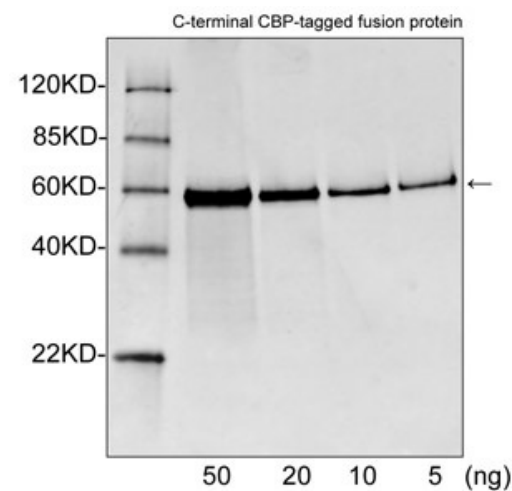
<b>Form</b>	Lyophilized
<b>Storage Buffer</b>	Lyophilized with PBS, pH 7.4, containing 0.02% sodium azide
<b>Reconstitution</b>	Reconstitute the lyophilized powder with deionized water (or equivalent) to a final concentration of 0.5 mg/ml.
<b>Storage Instructions</b>	The lyophilized product remains stable for up to 1 year at -20 °C from the date of receipt. Upon reconstitution, it can be stored for 2-3 weeks at 2-8 °C or for up to 12 months at -20 °C or below. Avoid repeated freezing and thawing cycles.

<b>Purification</b>	Affinity chromatography
<b>Isotype</b>	Rabbit IgG
<b>Clonality</b>	Polyclonal
<b>Clone ID</b>	Not applicable

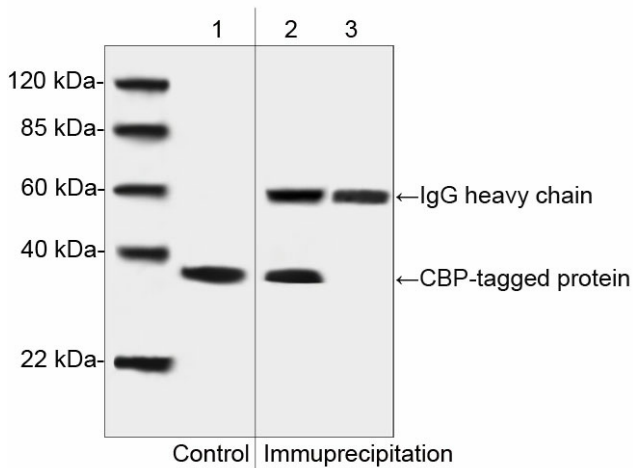
## Examples



Lane 1-2: CBP tag fusion protein expressed in *E. coli* Cell Lysate  
 Antibody: 1 µg/ml Rabbit Anti-CBP-tag Polyclonal Antibody (GenScript, A00635)  
 The result was developed with One-Step Western™ Basic Kit (GenScript, L00204C)



Western blot analysis of CBP tagged fusion proteins expressed in *E. coli* cell lysate using Rabbit Anti-CBP-tag Polyclonal Antibody (GenScript, A00635, 1 µg/ml) The signal was developed with IRDy™ 800 Conjugated Goat Anti-Rabbit IgG.



Western blot analysis of CBP-tagged protein from the transfected CHO cell lysates and its immuno-precipitates.

Lane 1: CBP-tagged protein from the transfected CHO cell lysates as input control.

Lane 2: Immuno-precipitates of CBP-tagged protein from the transfected CHO cell lysates with CBP Tag Antibody, pAb, Rabbit (GenScript, A00635).

Lane 3: Immuno-precipitates of the CBP-tagged protein from the transfected CHO cell lysates with Rabbit IgG Control (Whole Molecule), Purified (GenScript, A01008).

## Background

**Target Background :** CBP tag is a calmodulin-binding peptide, KRRWKKNFIAVSAANRFKKISSSGAL, derived from skeletal/cardiac muscle myosin light chain kinase 2. GenScript Rabbit Anti-CBP-tag Polyclonal Antibody is developed in rabbit hosts using a synthetic CBP tag peptide conjugated to KLH. CBP-tag Antibody is highly purified from rabbit antiserum by immunoaffinity chromatography. The antibody is suitable for detecting CBP fusion proteins.

**Synonyms :** Rabbit Anti-CBP-tag pAb;

**For laboratory research use only. Direct human use, including taking orally and injection and clinical use are forbidden.**

生产商: 南京金斯瑞生物科技有限公司 江苏省南京市江宁区科学园雍熙路28号

Manufacturer: Nanjing GenScript Biotech Co., Ltd. No. 28Yongxi Road, Jiangning District, Nanjing, Jiangsu, China