

Rev03
Update: Dec,14,2021

DATASHEET

E-tag Antibody, pAb, Rabbit

Cat. No.: A00631

Overview

| | |
|---------------------|---|
| Specificity | This Antibody recognizes E tagged fusion proteins. |
| Host Species | Rabbit |
| Immunogen | E epitope tag peptide GAPVPYPDPLEPR conjugated to KLH |
| Conjugate | Unconjugated |

Applications

Working concentrations for specific applications should be determined by the investigator. The appropriate concentrations may be affected by secondary antibody affinity, antigen concentration, the sensitivity of the method of detection, temperature, the length of the incubations, and other factors. The suitability of this antibody for applications other than those listed below has not been determined. The following concentration ranges are recommended starting points for this product.

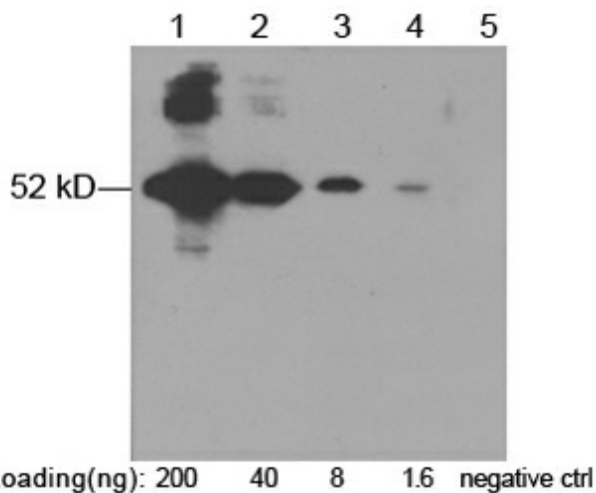
| Application | Recommended Usage |
|--------------------|--------------------------|
| ELISA | 0.05-0.2 µg/ml |
| Western Blot | 0.1-1.0 µg/ml |
| Western Blot | 1:100-1:1,000 |
| Other applications | User-optimized |

Properties

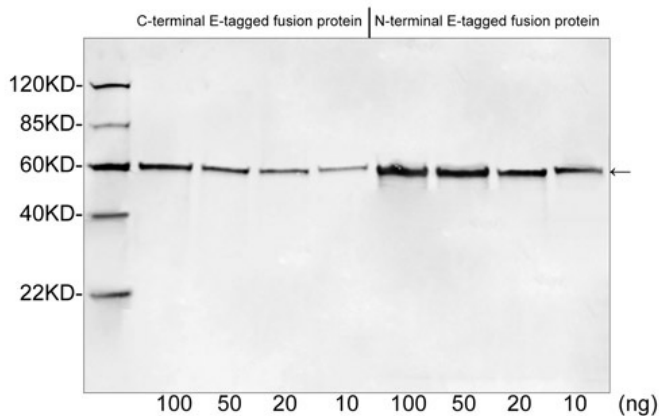
| | |
|-----------------------------|--|
| Form | Liquid |
| Storage Buffer | 1×PBS, pH 7.4, containing 0.02% sodium azide |
| Concentration | 1 mg/ml |
| Storage Instructions | The antibody is stable for 2-3 weeks if stored at 2-8°C. For long term storage, aliquot and store at -20°C or below. Avoid repeated freezing and thawing cycles. |
| Purification | Affinity chromatography |

| | |
|------------------|--|
| Isotype | Rabbit IgG |
| Clonality | Polyclonal |
| Clone Id | Not applicable |
| Note | Small volume of antibody will occasionally become entrapped in the cap of the vial during shipment and storage. Before use, centrifuge the vial briefly to bring down any liquid in the cap. |

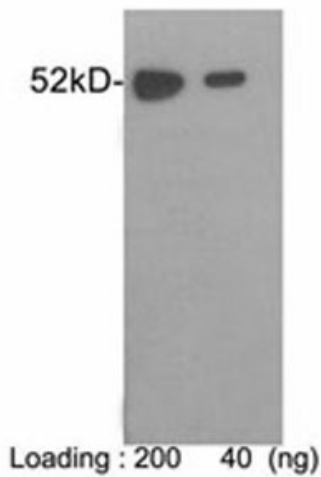
Examples



Lane 1-4: E-tag fusion protein in CHO cell lysate (\approx 52 kD)
 Lane 5: Negative CHO cell lysate
 Primary Antibody: 1 μ g/ml Rabbit Anti-E-tag Polyclonal Antibody (GenScript, A00631)
 Secondary Antibody: Goat Anti-Rabbit IgG (H&L) [HRP] Polyclonal Antibody (GenScript, A00098, 1:10,000)
 The signal was developed with LumiSensor™ HRP Substrate Kit (GenScript, L00221V500)



Western blot analysis of E tagged fusion proteins expressed in E. coli cell lysate using Rabbit Anti-E-tag Polyclonal Antibody (GenScript, A00631, 1 μ g/ml) The signal was developed with IRDye™ 800 Conjugated Goat Anti-Rabbit IgG.



Western blot analysis of E-tag fusion protein using 1 µg/ml Rabbit Anti-E-tag Polyclonal Antibody (GenScript, A00631)

The signal was developed with One-Step Western™ Complete Kit (Rabbit) (GenScript, L00204C)

Background

Target Background : Rabbit Anti-E-tag Polyclonal Antibody is supplied as a 40 µg aliquot at a concentration of 1.0 mg/ml in PBS, pH 7.4, containing 0.02% sodium azide. It is purified by immunoaffinity chromatography.

Synonyms : Rabbit Anti-E-tag; Anti-E-tag

For laboratory research use only. Direct human use, including taking orally and injection and clinical use are forbidden.