

Rev03
Update: Dec,14,2021

DATASHEET

GST-tag Antibody [Biotin], pAb, Rabbit

Cat. No.: A00202

Overview

Specificity	This antibody is specific for the GST protein from Schistosoma japonicum and is useful for detecting GST and GST-fusion proteins. Cross-reactivity with cell lysate of E.coli bacteria, sf21 cell and yeast have not been observed.
Host Species	Rabbit
Immunogen	Recombinant Glutathione S-Transferase (GST) from Schistosoma japonicum
Species Reactivity	Schistosoma japonicum
Conjugate	Biotin

Applications

Working concentrations for specific applications should be determined by the investigator. The appropriate concentrations may be affected by secondary antibody affinity, antigen concentration, the sensitivity of the method of detection, temperature, the length of the incubations, and other factors. The suitability of this antibody for applications other than those listed below has not been determined. The following concentration ranges are recommended starting points for this product.

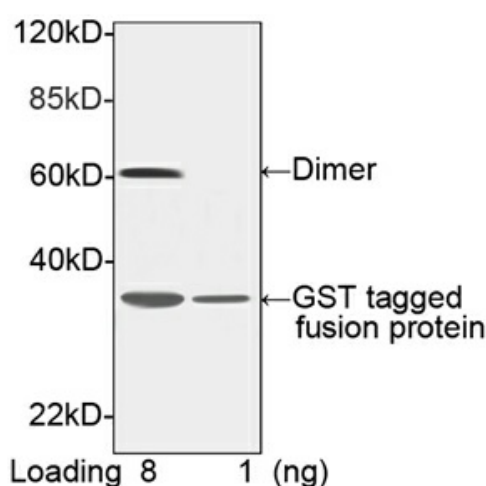
Application	Recommended Usage
ELISA	0.01-0.1 µg/ml
Western Blot	0.1-1.0 µg/ml
Other applications	User-optimized

Properties

Form	Liquid
Storage Buffer	1×PBS, pH 7.4, containing 1% BSA and 0.02% sodium azide
Concentration	1 mg/ml
Storage Instructions	The antibody is stable for 2-3 weeks if stored at 2-8°C. For long term storage, aliquot and store at -20°C or below. Avoid repeated freezing and thawing cycles.

Purification	Affinity chromatography
Isotype	Rabbit IgG
Clonality	Polyclonal
Clone Id	Not applicable
Note	Small volume of antibody will occasionally become entrapped in the cap of the vial during shipment and storage. Before use, centrifuge the vial briefly to bring down any liquid in the cap.

Examples



Western blot analysis of GST-tagged fusion protein using GST-tag Antibody [Biotin], pAb, Rabbit (GenScript, A00202, 1 µg/ml). The signal was developed with Streptavidin-HRP (GenScript, M00091, 1:5,000) and LumiSensor™ HRP Substrate Kit (GenScript, L00221).
 Predicted Size: 31 kD
 Observed Size: 31 kD, 62 kD

Background

Target Background : Rabbit Anti-GST-tag [Biotin] Polyclonal Antibody is highly purified from rabbit antiserum by immunoaffinity chromatography and then conjugated to biotin.

Synonyms : Anti-GST-tag [Biotin];

For laboratory research use only. Direct human use, including taking orally and injection and clinical use are forbidden.