

Sample Name : Glucagon-Like Peptide (GLP)II,human  
Cat. No. :RP10769  
Lot. No. :CC04903

Pump A : 0.065% trifluoroacetic in 100% water  
Pump B : 0.05% trifluoroacetic in 100% acetonitrile  
Total Flow:1 ml/min  
Wavelength:214 nm

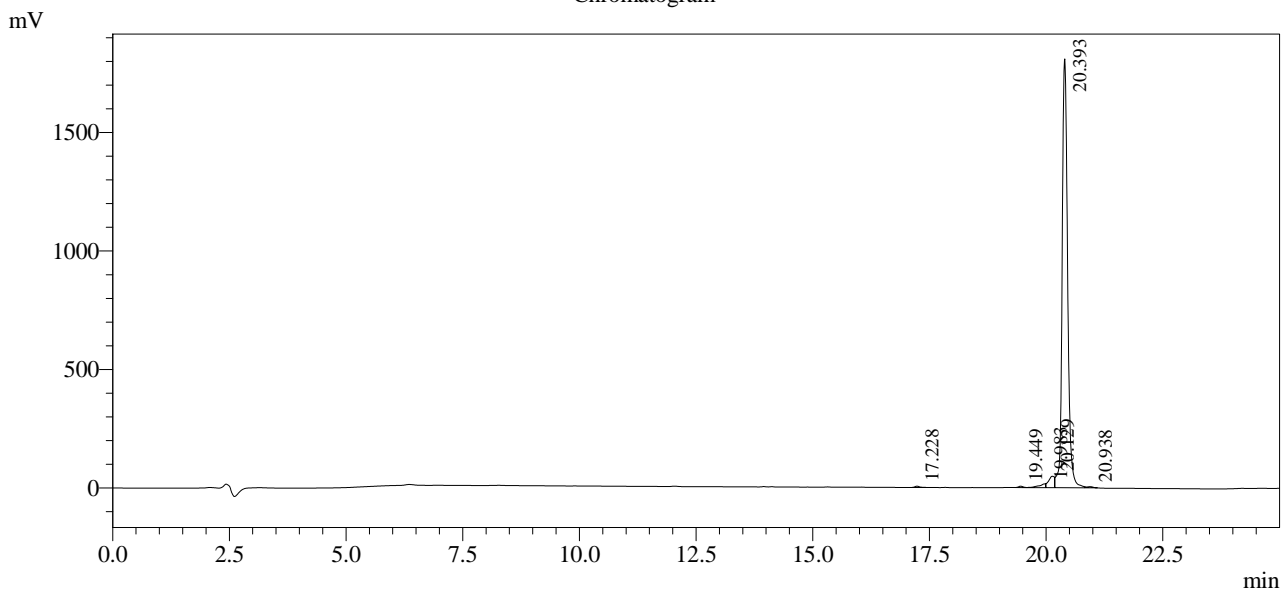
Time	Unit	Command	Value	Comment
0.01	Pumps	Pump A B.Conc	5	
25.00	Pumps	Pump A B.Conc	65	
25.10	Pumps	Pump A B.Conc	95	
33.00	Pumps	Pump A B.Conc	95	
33.10	Pumps	Pump A B.Conc	5	
43.00	Pumps	Pump A B.Conc	5	
43.10	Controller	Stop		

<<Column Performance>>

<Detector A>

Column : SHIMADZU VP-ODS 4.6 x 150 mm

Chromatogram



1 Det.A Ch1 / 214nm

Peak Table

Detector A Ch1 214nm

Peak#	Ret. Time	Area	Height	Area %
1	17.228	42758	5547	0.276
2	19.449	40632	5944	0.263
3	19.983	161547	16252	1.044
4	20.129	420575	48348	2.718
5	20.393	14762625	1809532	95.421
6	20.938	42980	4681	0.278
Total		15471117	1890303	100.000