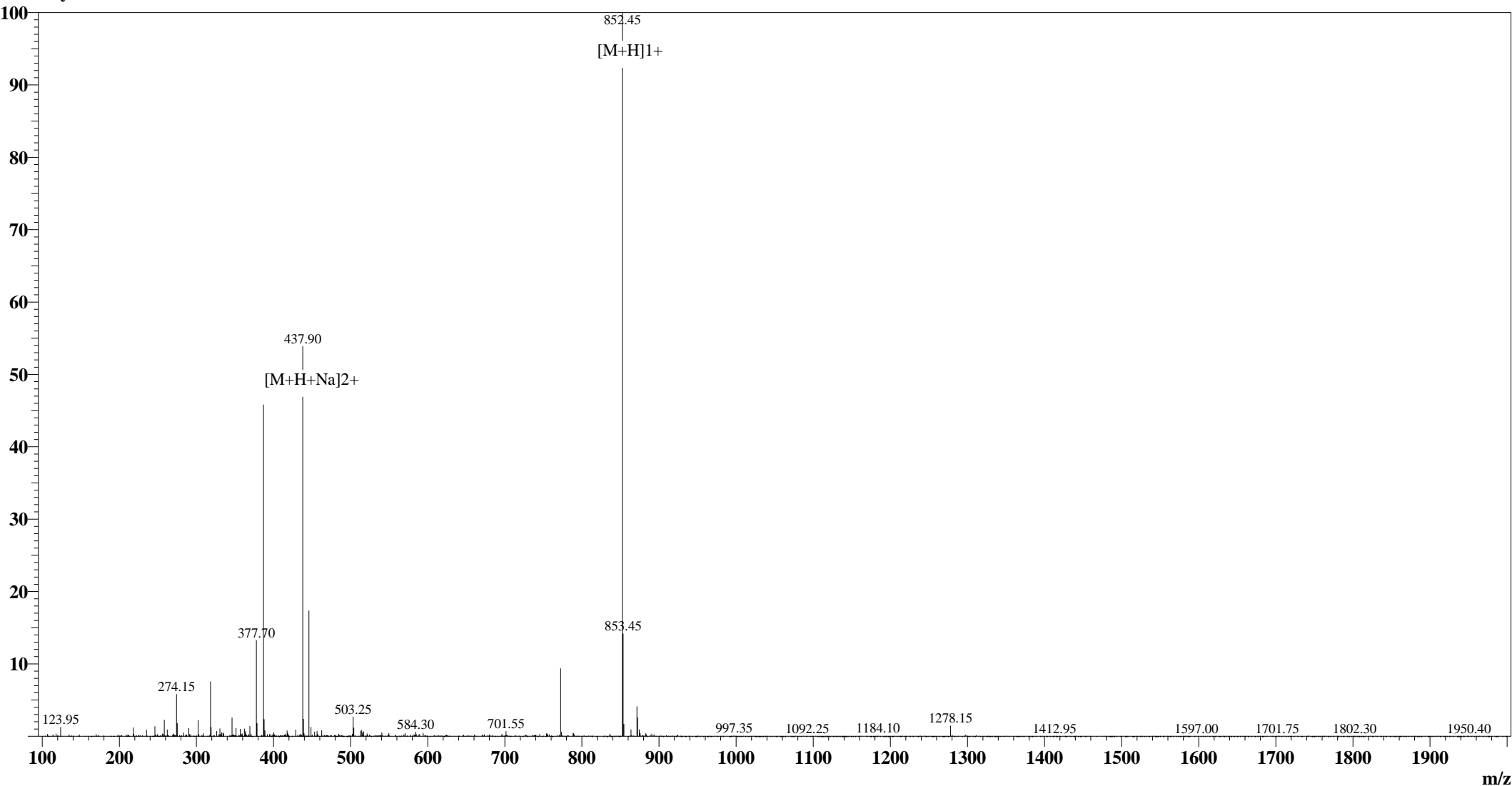


Positive

# MS Spectrum

Intensity



## Sample Information

User :xu  
Date Acquired : 2008-9-29 11:40:49  
Sample Name :Kemptide(Phospho-Ser5)  
Cat No. : RP20111  
Injection Volum : 1.000μL  
Theoretical MW :851.89  
Observed MW :851.45

Interface :ESI  
Nebulizing Gas Flow :1.50 L/min  
CDL Temp : 250°C  
CDL Volt : -25.0V  
Block Temp : 200°C

Prerod Bias :+4.5kv  
Detector :1.5kv  
T.Flow : 0.2ml/min  
B.conc : 50%H2O/50%MeOH