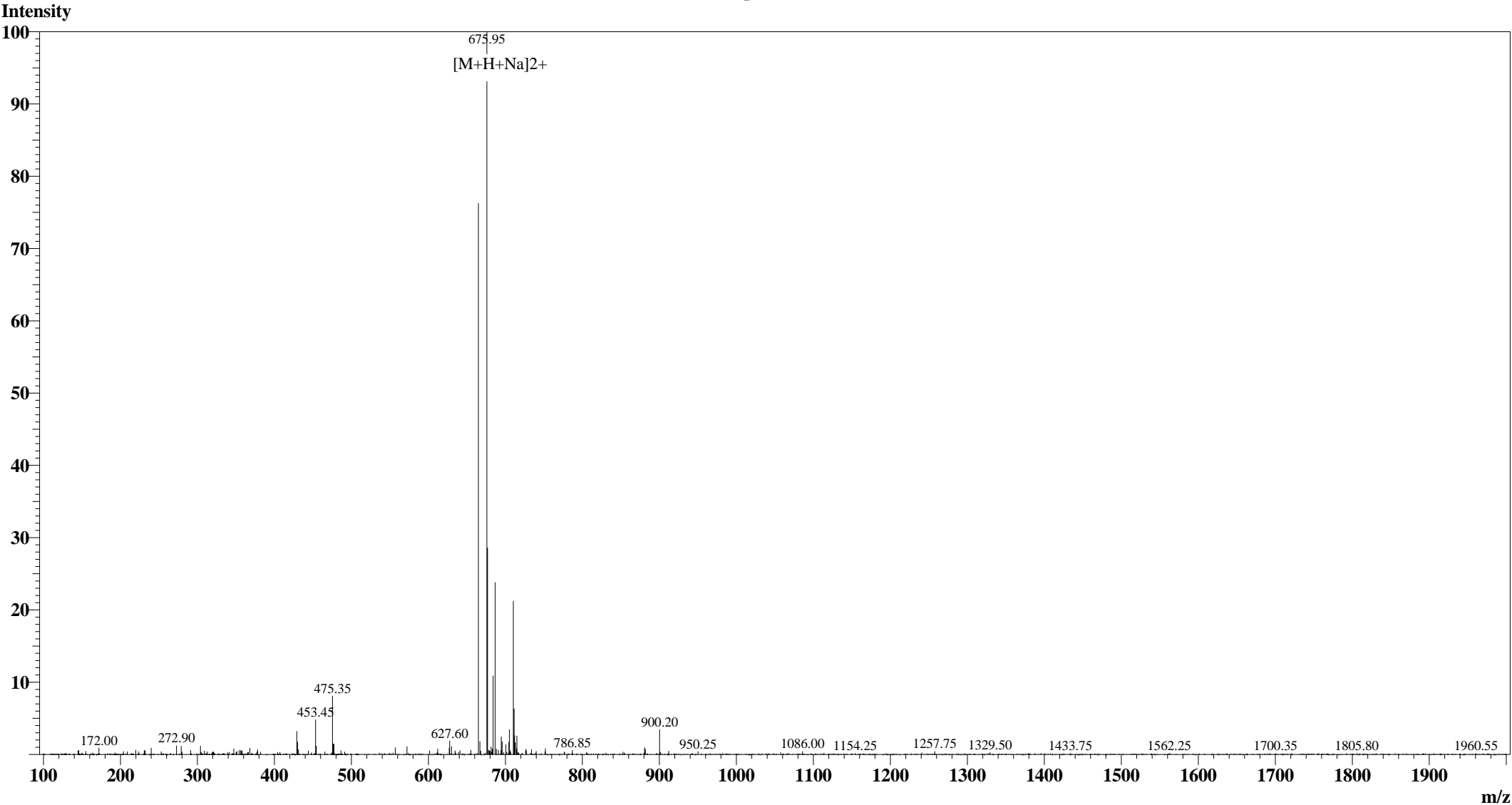


Positive

MS Spectrum



Sample Information					
User	:xu	Interface	:ESI	Prerod Bias	:+4.5kv
Date Acquired	: 2008-9-22 16:38:56	Nebulizing Gas Flow	:1.50 L/min	Detector	:1.5kv
Sample Name	:EGF Receptor Substrate 2 (Phospho- Tyr5)	CDL Temp	: 250°C	T.Flow	: 0.2ml/min
Cat No.	: RP20109	CDL Volt	: -25.0V	B.conc	: 50%H2O/50%MeOH
Injection Volum	: 1.000µL	Block Temp	: 200°C		
Theoretical MW	:1328.28				
Observed MW	:1327.90				