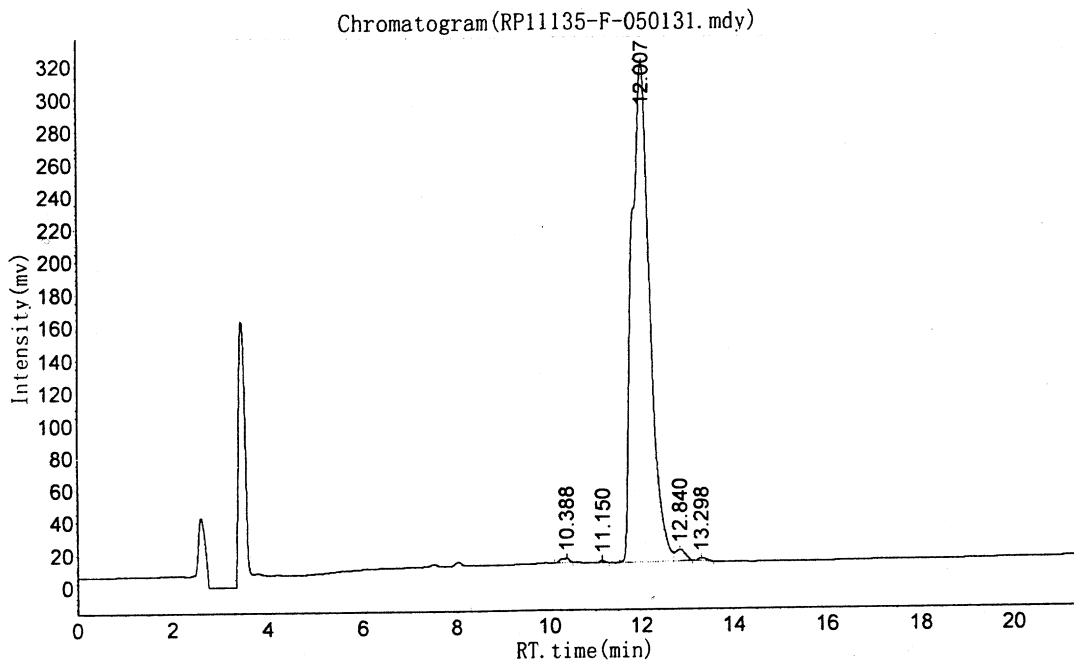


Summary:  
 Structure : RP11135  
 Column : 4.6×250mm, Kromasil C18-5  
 Solvent A : 0.1% trifluoroacetic in 100% acetonitrile  
 Solvent B : 0.1% trifluoroacetic in 100% water  
 Gradient :  
           A           B  
   0.01min   25%       75%  
   25min     50%       50%  
   25.1min   100%      0%  
   30min           STOP  
 Flow rate : 1.0 mL/min  
 Wavelength : 220nm

Cat. No.: RP11135  
 Lot No.: PY00101502



# RESULTS

| Peak No. | Peak ID | Ret Time | Height     | Area        | Conc     |
|----------|---------|----------|------------|-------------|----------|
| 1        |         | 10.388   | 2565.000   | 34908.238   | 0.4119   |
| 2        |         | 11.150   | 1466.411   | 10492.202   | 0.1238   |
| 3        |         | 12.007   | 307926.656 | 8296866.000 | 97.9050  |
| 4        |         | 12.840   | 6988.541   | 108383.984  | 1.2790   |
| 5        |         | 13.298   | 1655.829   | 23752.523   | 0.2803   |
| TOTAL    |         |          | 320602.437 | 8474402.948 | 100.0000 |