

Sample Name : Calcitonin Gene Related Peptide (CGRP) (8-37), human  
 Cat. No. : RP11089

Pump A : 0.065% trifluoroacetic in 100% water  
 Pump B : 0.05% trifluoroacetic in 100% acetonitrile  
 Total Flow:1 ml/min  
 Wavelength:214 nm

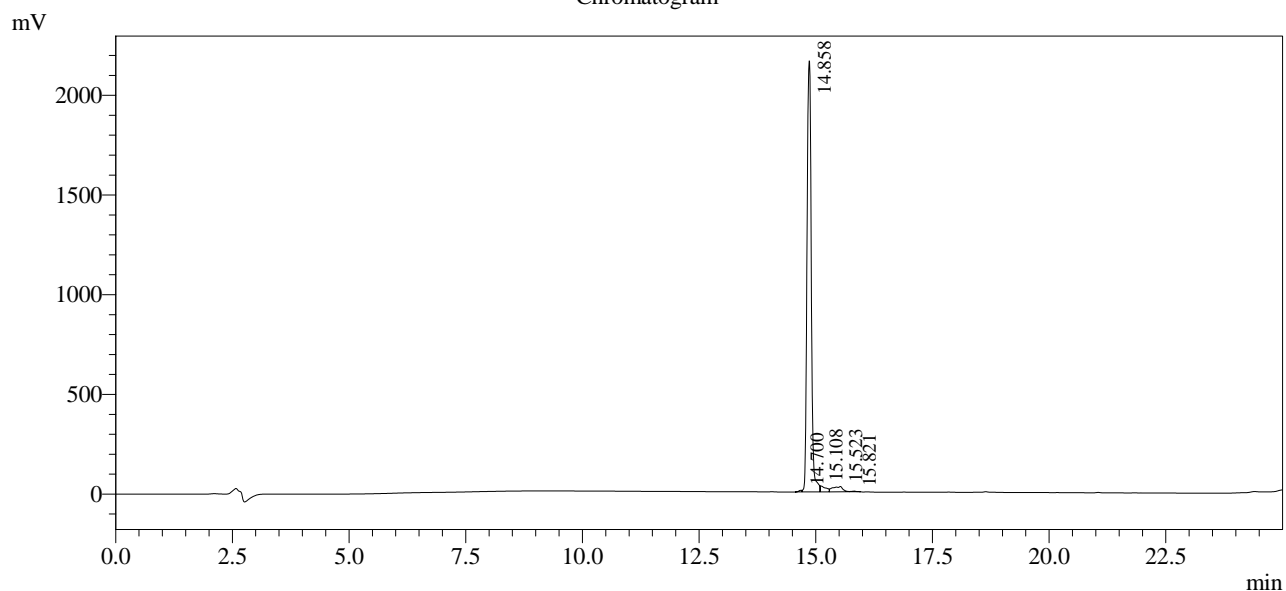
Time	Unit	Command	Value	Comment
0.01	Pumps	Pump A B.Conc	5	
25.00	Pumps	Pump A B.Conc	75	
25.10	Pumps	Pump A B.Conc	95	
33.00	Pumps	Pump A B.Conc	95	
33.10	Pumps	Pump A B.Conc	5	
43.00	Pumps	Pump A B.Conc	5	
43.10	Controller	Stop		

<<Column Performance>>

<Detector A>

Column : SHIMADZU VP-ODS 4.6 x 150 mm

Chromatogram



1 Det.A Ch1 / 214nm

Peak Table

Detector A Ch1 214nm

Peak#	Ret. Time	Area	Height	Area %
1	14.700	40471	8298	0.281
2	14.858	13668498	2162041	95.011
3	15.108	254872	28878	1.772
4	15.523	401168	26530	2.789
5	15.821	21181	2984	0.147
Total		14386190	2228730	100.000