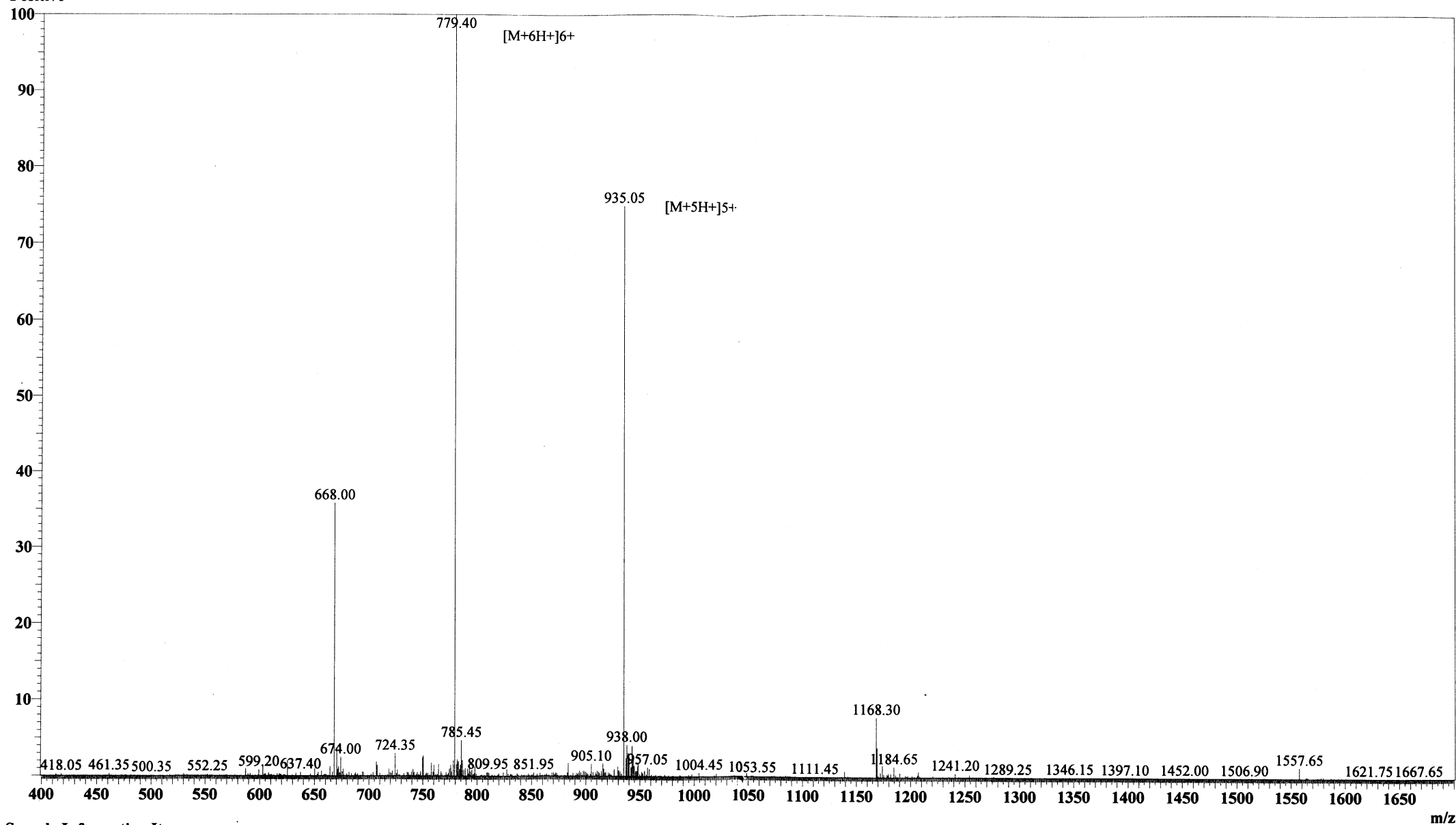


## MS Spectrum

Positive



## Sample Information Item

Date and Time : 2005-5-8 19:24:19  
User : FJS  
Sample : SA-41-NH2-2(RP10983)  
Inj. Volume : 1.000  
MW : 4670.41

Cat. No.: RP10983  
Lot No.: PJ00306506

Probe: ESI  
Nebulizer Gas Flow: 1.5L/min  
CDL: -20.0v  
CDL Temp: 250°C  
Block Temp: 200°C

Probe bias: +4.5kv  
Detector: 1.5kv  
T. Flow: 0.2ml/min  
B. conc: 50%H2O/50%ACN