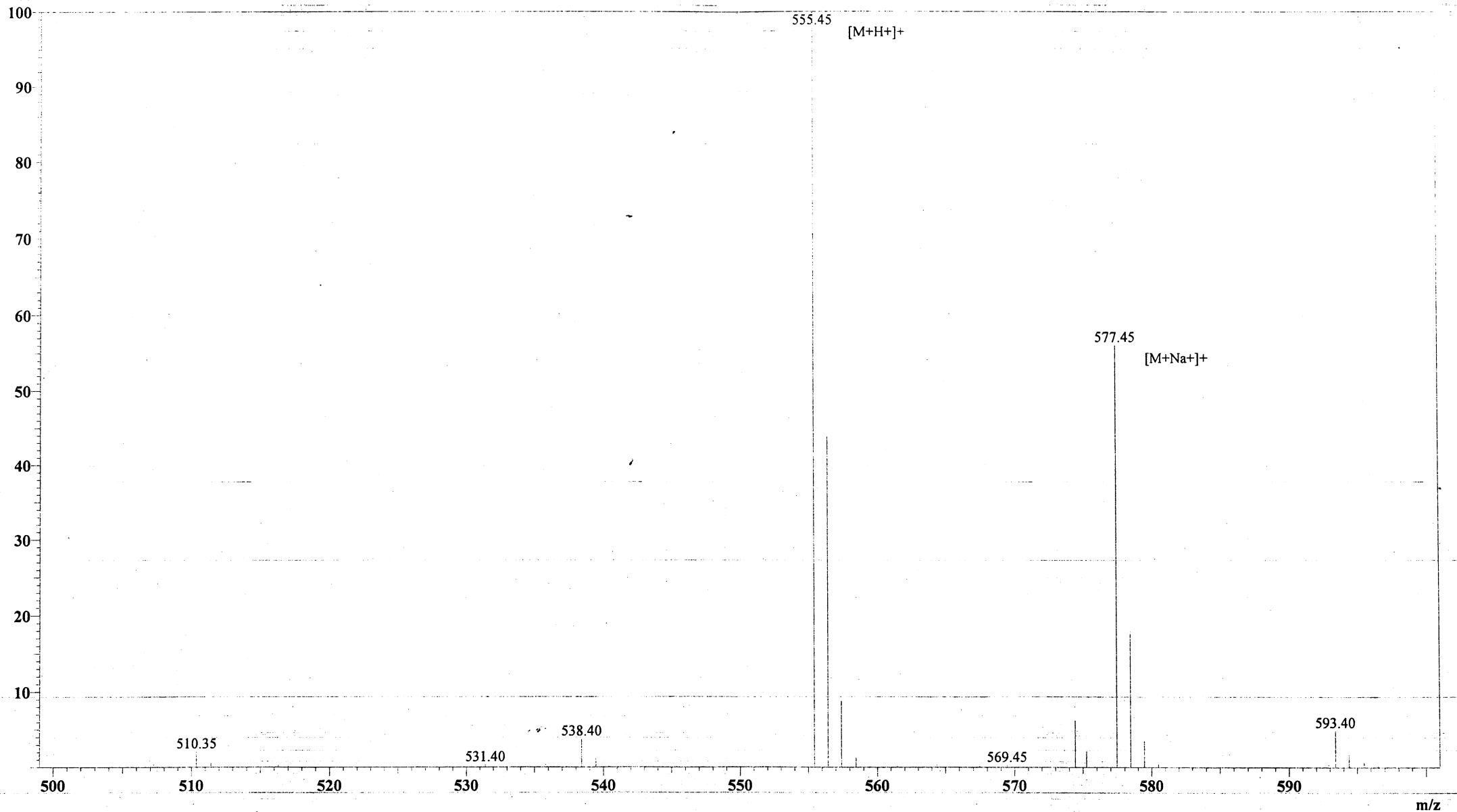


MS Spectrum

Positive



Sample Information Item

Date and Time : 2005-3-7 15:55:09
User : FJS
Sample : RP10885(YL-5-NH2)
Inj. Volume : 1.000
MW : 554.65

Cat. No.: RP10885

Lot No.: PL00308503

Probe: ESI
Nebulizer Gas Flow: 1.5L/min
CDL: -20.0v
CDL Temp: 250°C
Block Temp: 200°C

Probe bias: +4.5kv
Detector: 1.5kv
T. Flow: 0.2ml/min
B. conc: 50%H2O/50%ACN