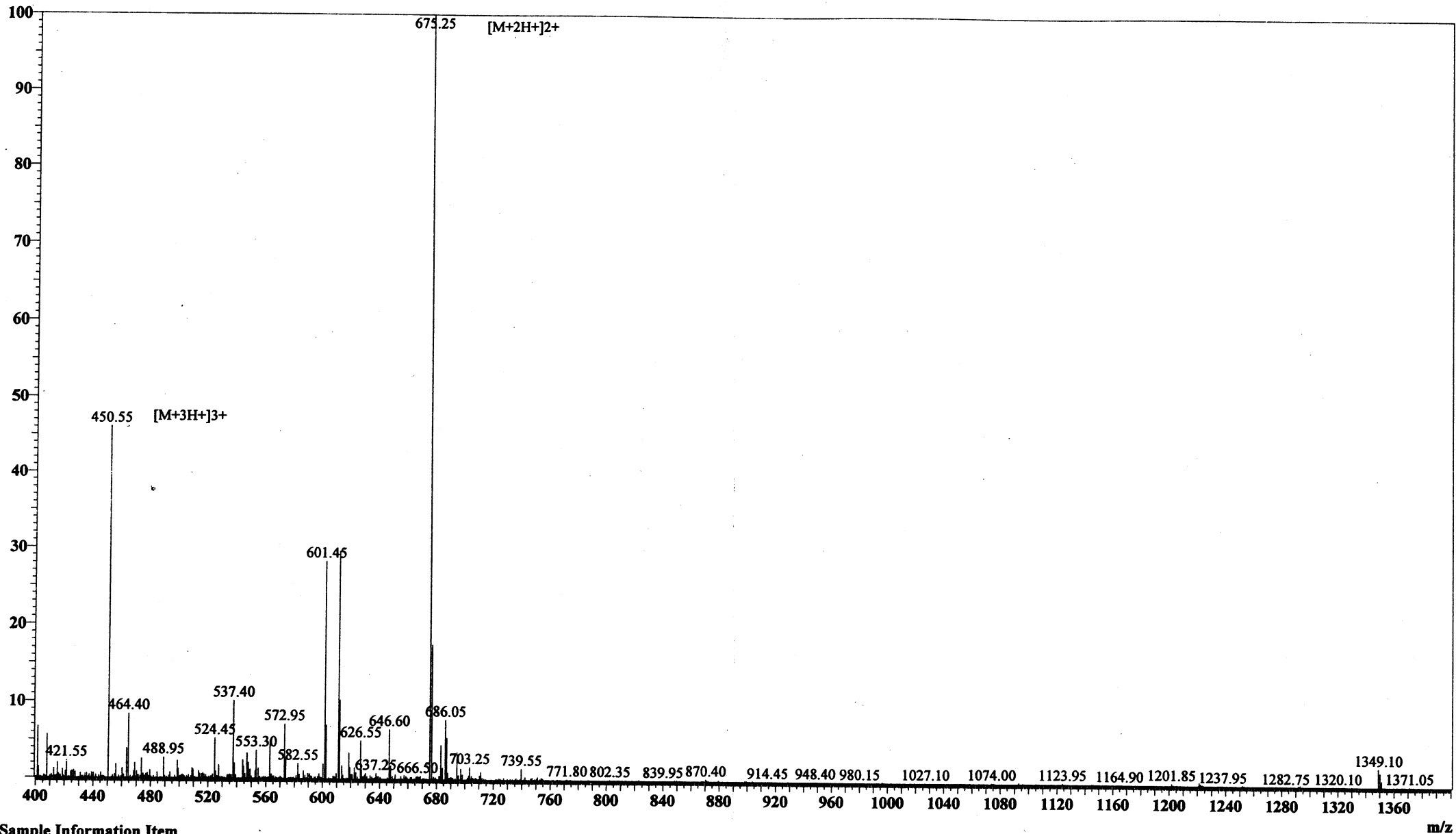


# MS Spectrum

Positive



## Sample Information Item

Date and Time : 2005-1-14 16:41:58  
 User : xie  
 Sample : RP10185(RM-11)  
 Inj. Volume : 1.000  
 MW : 1348.65

Cat. No.: RP10185  
 Lot No.: PJ00325504

Probe: ESI  
 Nebulizer Gas Flow: 1.5L/min  
 CDL: -20.0v  
 CDL Temp: 250°C  
 Block Temp: 200°C

Probe bias: +4.5kv  
 Detector: 1.5kv  
 T. Flow: 0.2ml/min  
 B. conc: 50%H<sub>2</sub>O/50%ACN