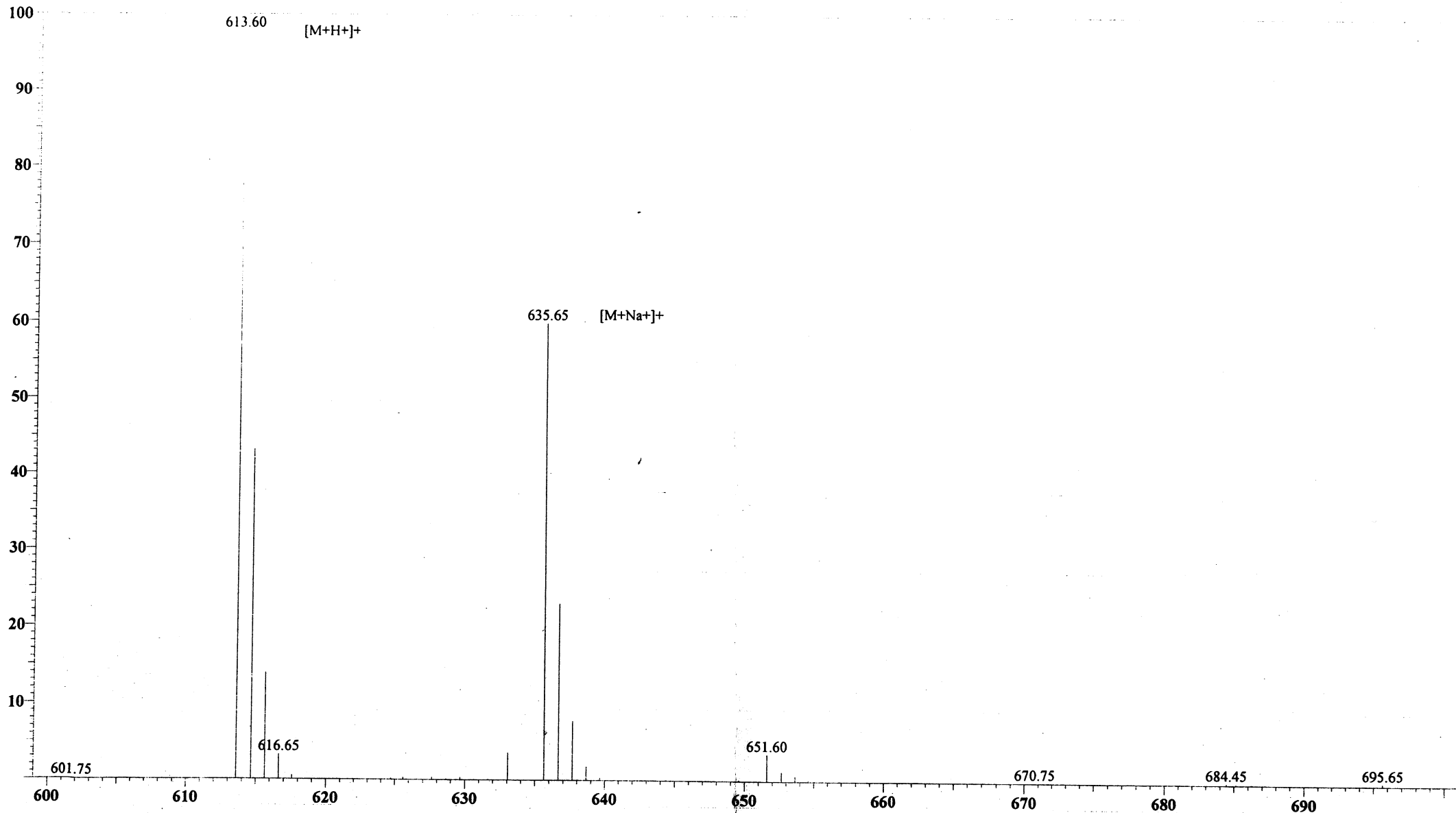


MS Spectrum

Positive



Sample Information Item

Date and Time : 2005-2-28 22:16:38
 User : xie
 Sample : RP10182 FM-5-NH2
 Inj. Volume : 1.000
 MW : 612.8

Cat. No.: RP10182

Lot No.: PX00102503

Probe: ESI
 Nebulizer Gas Flow: 1.5L/min
 CDL: -20.0v
 CDL Temp: 250°C
 Block Temp: 200°C

Probe bias: +4.5kv
 Detector: 1.5kv
 T. Flow: 0.2ml/min
 B. conc: 50%H2O/50%ACN

m/z