

Sample Name : InsB9-23
 Cat. No. :RP20391
 Lot. No. :84280002112509ZW

Pump A : 0.065% trifluoroacetic in 100% water (v/v)
 Pump B : 0.05% trifluoroacetic in 100% acetonitrile (v/v)
 Total Flow:1 ml/min
 Wavelength:220 nm

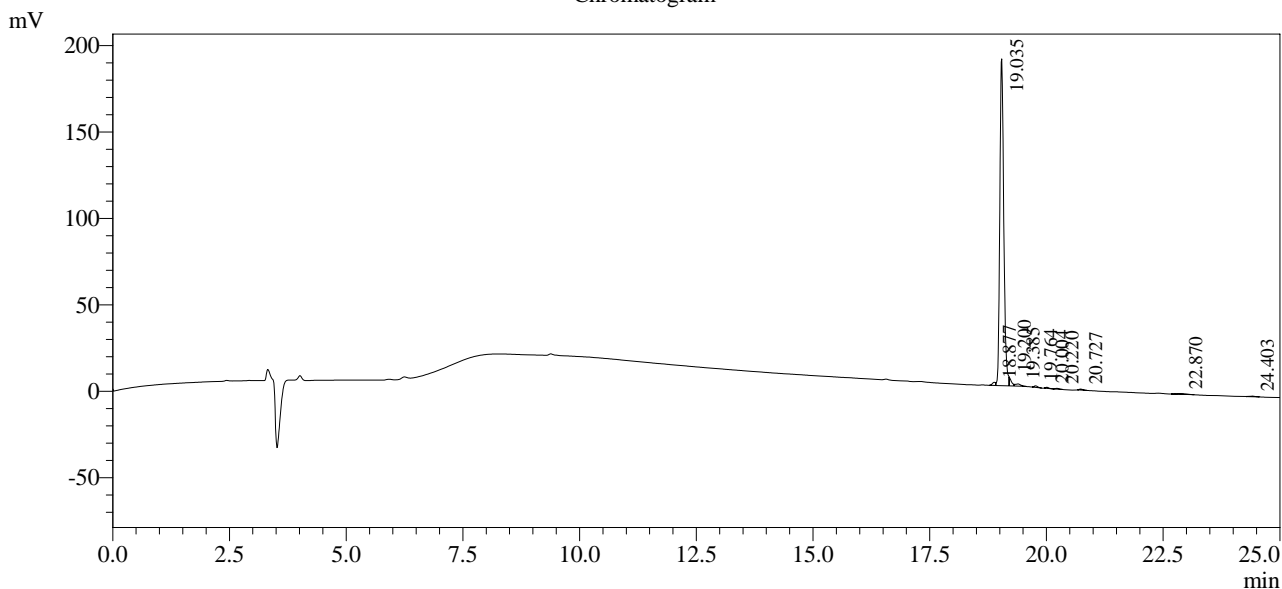
Time	Unit	Command	Value	Comment
0.01	Pumps	Pump A B.Conc	5	
25.00	Pumps	Pump A B.Conc	65	
25.01	Pumps	Pump A B.Conc	95	
31.00	Pumps	Pump A B.Conc	95	
31.01	Pumps	Pump A B.Conc	5	
40.00	Pumps	Pump A B.Conc	5	
40.01	Controller	Stop		

<<Column Performance>>

<Detector A>

Column : Alltima™ C18 4.6 x 250 mm

Chromatogram



1 Det.A Ch1 / 220nm

Peak Table

Detector A Ch1 220nm

Peak#	Ret. Time	Area	Height	Area %
1	18.877	8704	1794	0.748
2	19.035	1108185	189088	95.177
3	19.200	15900	5206	1.366
4	19.385	10453	1277	0.898
5	19.764	4566	867	0.392
6	20.004	2779	582	0.239
7	20.220	2358	458	0.202
8	20.727	3076	559	0.264
9	22.870	5623	344	0.483
10	24.403	2697	338	0.232
Total		1164342	200513	100.000