

Sample Name : Tyrosine Protein Kinase JAK 2 (pTyr8, 9)
 Cat. No. : RP20119
 Lot. No. : CE05910

Pump A : 0.065% trifluoroacetic in 100% water
 Pump B : 0.05% trifluoroacetic in 100% acetonitrile
 Total Flow : 1 ml / min

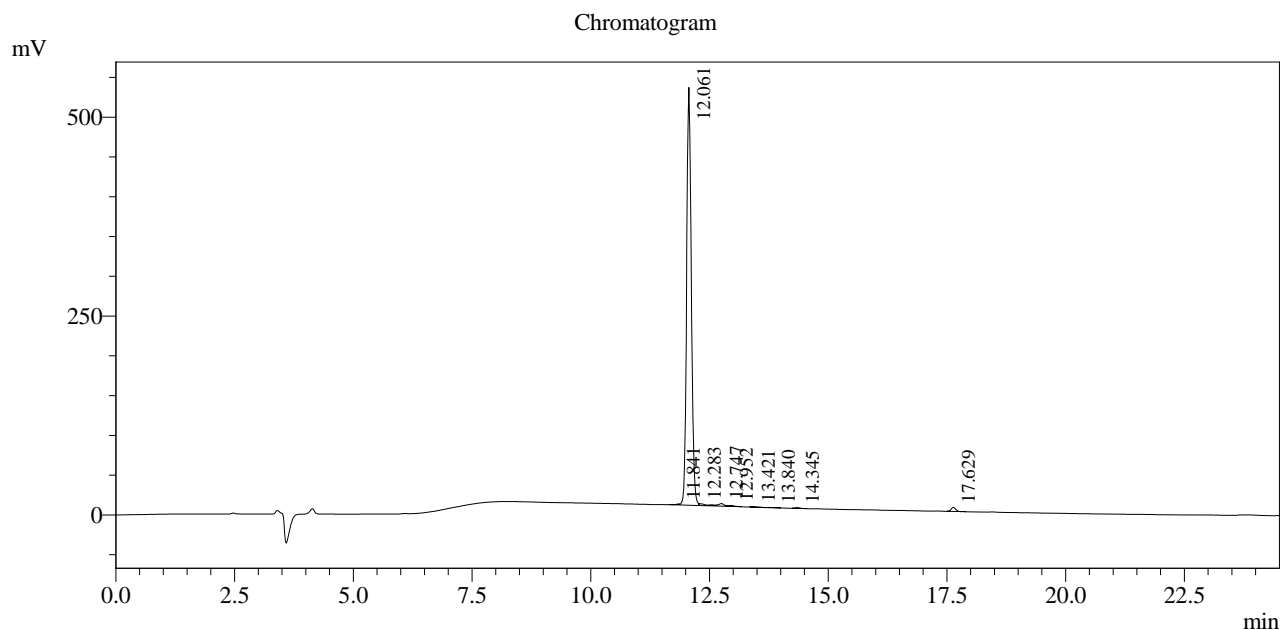
Wavelength : 220 nm

Time	Unit	Command	Value	Comment
0.01	Pumps	Pump A B.Conc	5	
25.00	Pumps	Pump A B.Conc	65	
25.01	Pumps	Pump A B.Conc	95	
35.00	Pumps	Pump A B.Conc	95	
35.01	Pumps	Pump A B.Conc	5	
45.00	Pumps	Pump A B.Conc	5	
45.01	Controller	Stop		

<<Column Performance>>

<Detector A>

Column : AlltimaTM C18 4.6 x 250 mm



1 Det.A Ch1 / 220nm

Peak Table

Detector A Ch1 220nm

Peak#	Ret. Time	Area	Height	Area %
1	11.841	5262	1206	0.141
2	12.061	3606403	525173	96.785
3	12.283	17514	2281	0.470
4	12.747	39867	3268	1.070
5	12.952	10539	1305	0.283
6	13.421	2857	358	0.077
7	13.840	2945	593	0.079
8	14.345	6661	1020	0.179
9	17.629	34166	5228	0.917
Total		3726214	540431	100.000