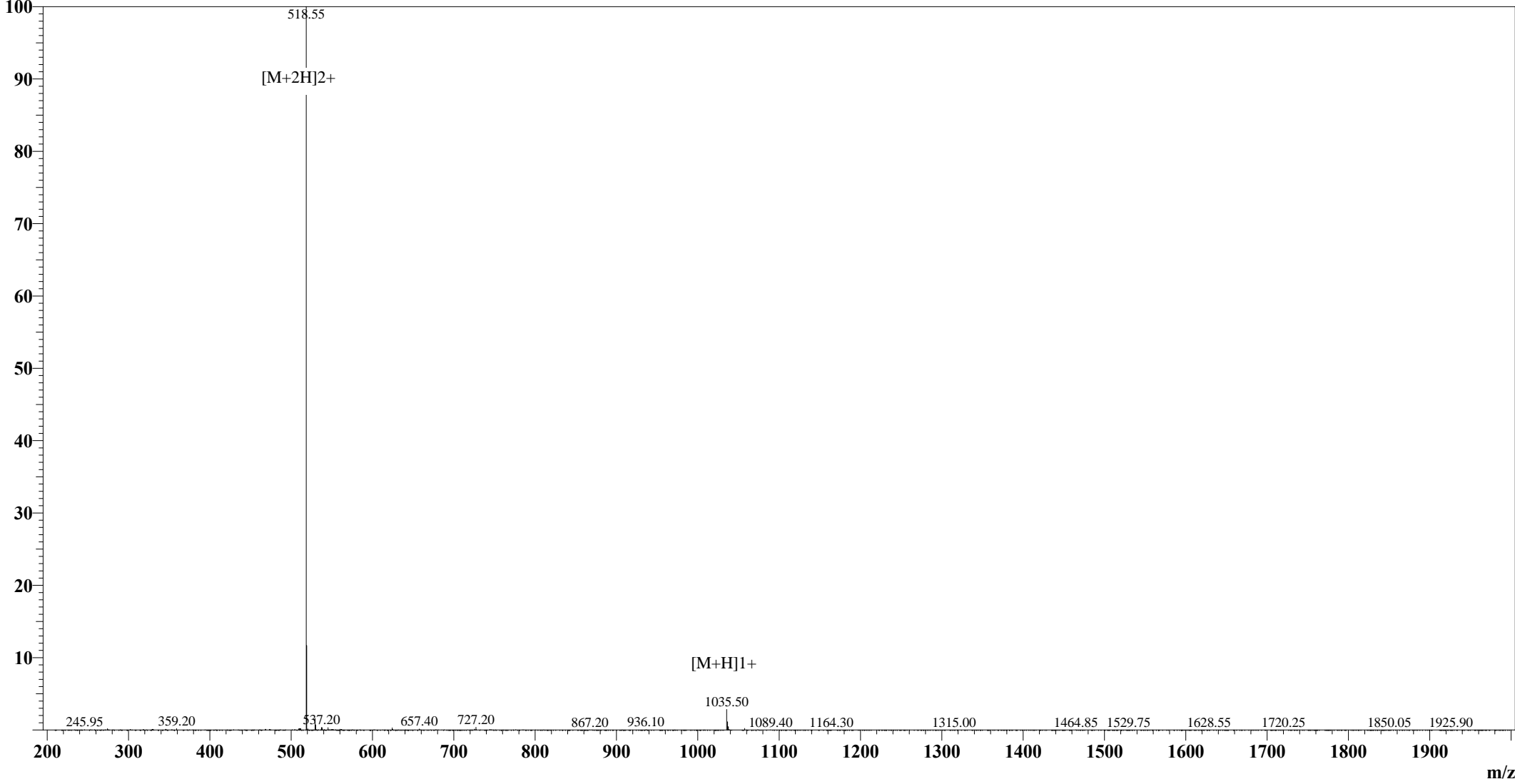


Positive

MS Spectrum

Intensity



Sample Information

User : Grace  
Date Acquired : 09/25/2009 12:16:13  
Sample Name : HEX3  
Cat No. : RP20346  
Lot No. : CD15909  
Injection Volum : 1.000μL  
Theoretical MW : 1035.20  
Observed MW : 1035.10

Interface : ESI  
Nebulizing Gas Flow : 1.50 L/min  
CDL Temp : 250°C  
CDL Volt : -25.0V  
Block Temp : 200°C

Prerod Bias : +4.5kv  
Detector : 1.5kv  
T.Flow : 0.2ml/min  
B.conc : 50%H2O/50%MeOH