

Sample Name : AGA - (C8R) HNG17, Humanin derivative
 Cat. No. : RP20314
 Lot. No. : CD14909

Pump A : 0.065% trifluoroacetic in 100% water

Pump B : 0.05% trifluoroacetic in 100% acetonitrile

Total Flow : 1 ml / min

Wavelength : 220 nm

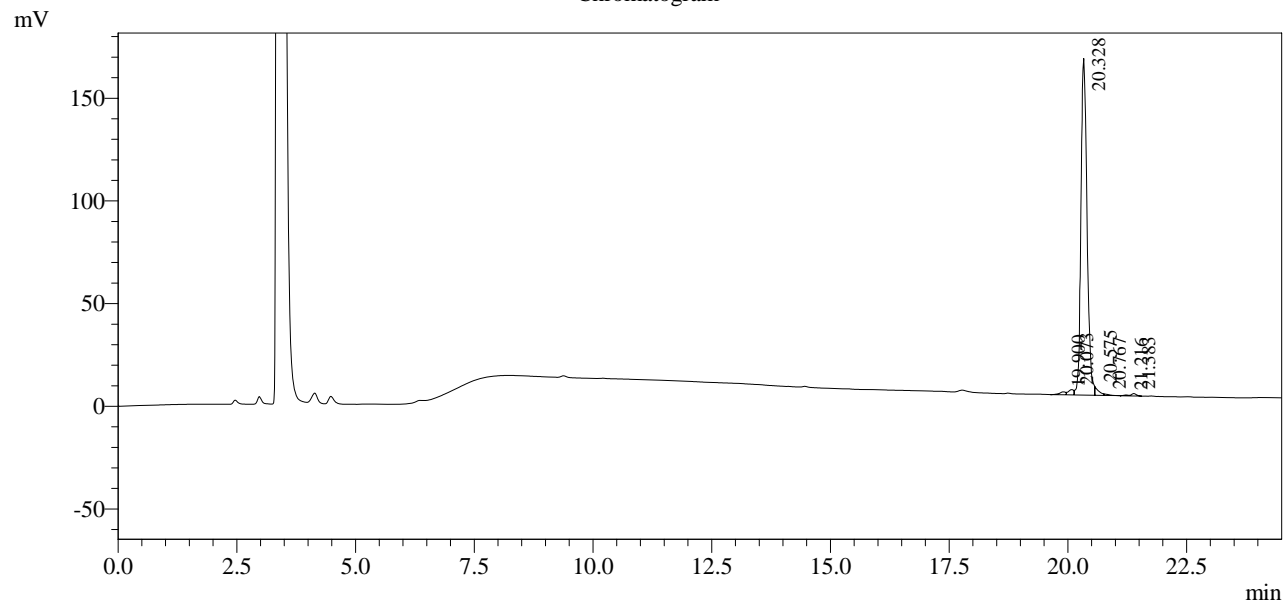
Time	Unit	Command	Value	Comment
0.01	Pumps	Pump A B.Conc	5	
25.00	Pumps	Pump A B.Conc	65	
25.01	Pumps	Pump A B.Conc	95	
35.00	Pumps	Pump A B.Conc	95	
35.01	Pumps	Pump A B.Conc	5	
45.00	Pumps	Pump A B.Conc	5	
45.01	Controller	Stop		

<<Column Performance>>

<Detector A>

Column : AlltimaTM C18 4.6 x 250 mm

Chromatogram



1 Det.A Ch1 / 220nm

Peak Table

Detector A Ch1 220nm

Peak#	Ret. Time	Area	Height	Area %
1	19.900	13451	1436	0.879
2	20.073	20766	2580	1.358
3	20.328	1456581	163941	95.236
4	20.575	22821	3992	1.492
5	20.767	4972	719	0.325
6	21.216	2508	388	0.164
7	21.383	8347	1147	0.546
Total		1529446	174204	100.000