

Sample Name : SNAP - 25 (187 - 203)  
Cat. No. :RP20259  
Lot. No. :CD20907

Pump A : 0.065% trifluoroacetic in 100% water  
Pump B : 0.05% trifluoroacetic in 100% acetonitrile  
Total Flow:1 ml/min  
Wavelength:214 nm

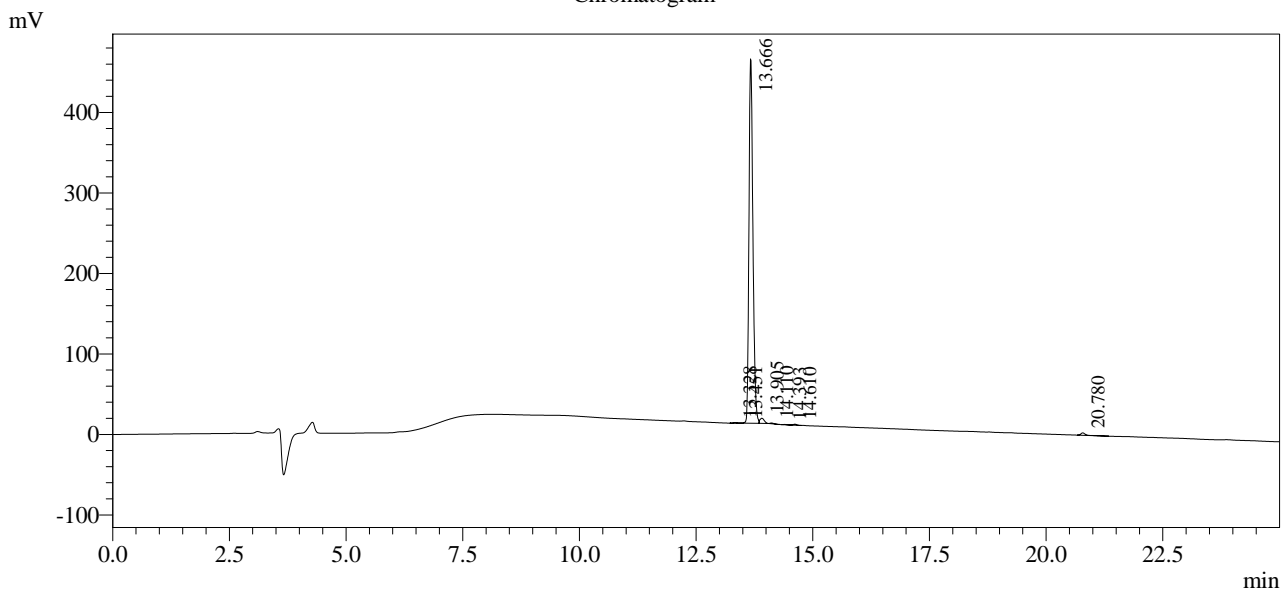
| Time  | Unit       | Command       | Value | Comment |
|-------|------------|---------------|-------|---------|
| 0.01  | Pumps      | Pump A B.Conc | 5     |         |
| 25.00 | Pumps      | Pump A B.Conc | 65    |         |
| 25.01 | Pumps      | Pump A B.Conc | 95    |         |
| 35.00 | Pumps      | Pump A B.Conc | 95    |         |
| 35.01 | Pumps      | Pump A B.Conc | 5     |         |
| 45.00 | Pumps      | Pump A B.Conc | 5     |         |
| 45.10 | Controller | Stop          |       |         |

<<Column Performance>>

<Detector A>

Column : AlltimaTM C18 4.6 x 250 mm

Chromatogram



1 Det.A Ch1 / 214nm

Peak Table

Detector A Ch1 214nm

| Peak# | Ret. Time | Area    | Height | Area %  |
|-------|-----------|---------|--------|---------|
| 1     | 13.328    | 2769    | 595    | 0.100   |
| 2     | 13.451    | 1982    | 323    | 0.072   |
| 3     | 13.666    | 2685135 | 452753 | 97.180  |
| 4     | 13.905    | 40536   | 6416   | 1.467   |
| 5     | 14.110    | 4976    | 968    | 0.180   |
| 6     | 14.393    | 1380    | 305    | 0.050   |
| 7     | 14.610    | 5957    | 1221   | 0.216   |
| 8     | 20.780    | 20328   | 2944   | 0.736   |
| Total |           | 2763062 | 465524 | 100.000 |