



抗独特型抗体

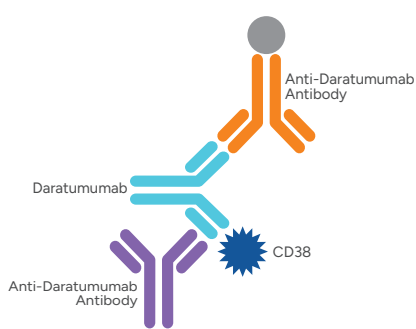
助力抗体药
药代动力学和免疫原性研究

抗独特型抗体

抗独特型抗体 (Anti-idiotypic antibody, Anti-ID Ab) 可以特异结合待测抗体位于可变区的独特位，其被广泛应用于临床前和临床研究中抗体药物含量的检测。当病人接受抗体药治疗，体内会产生抗药物抗体，有可能引起严重的免疫反应或产生具有中和能力会降低药效的中和抗体。因抗独特型抗体和抗药物抗体 (Anti-drug antibody, ADA) 的相似性，抗独特型抗体也是抗体药免疫原性分析的理想阳性参照物。金斯瑞开发了多种热销单抗药物的抗独特型抗体，助力相关创新药和生物类似药的开发。

产品应用

药代动力学 (Pharmacokinetics, PK) 研究：用于检测样本中的抗体药浓度



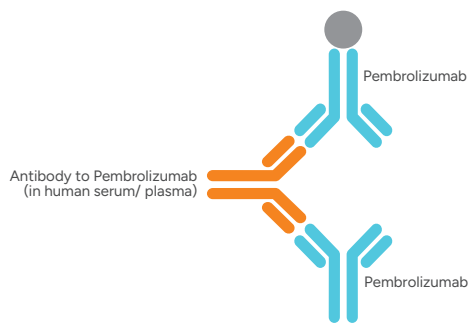
总达雷木单抗或生物类似药（游离，半结合，结合）PK检测示意图。该检测使用 Anti-Daratumumab Antibody, mAb, Mouse (Cat.No. A01996) 作为捕获抗体，Anti-Daratumumab Antibody (6A3), mAb, Mouse (Cat.No. A01997) 作为检测抗体。

注：A01977 在本试验中用生物素标记。

灵敏度	39 pg/mL
检测范围	78-1250 pg/mL
检测样本	人血清/血浆，小鼠血清/血浆

Figure 1. Example of Bridging ELISA-based PK assay

免疫原性 (Immunogenicity) 研究：用作抗药物抗体检测的阳性对照



帕博利珠单抗或生物类似物免疫原性检测示意图。Anti-Pembrolizumab Antibody, pAb, Rabbit (Cat.No. A01846) 可用作阳性对照制作标准曲线。

灵敏度	0.20 ng/mL
检测范围	1.56-100 ng/mL
检测样本	人血清/血浆（EDTA抗凝），小鼠血清，大鼠血清/血浆（肝素抗凝），兔血清/血浆（肝素抗凝）

Figure 2. Example of Bridging ELISA-based ADA assay

产品特色

高特异性

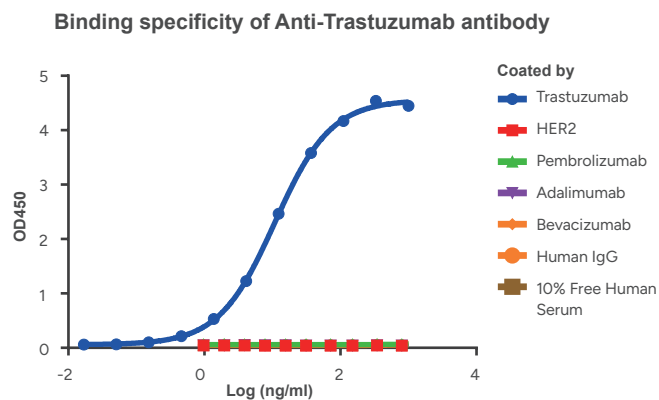


Figure 3. High specificity of Anti-Trastuzumab antibody to Trastuzumab.

The binding specificity of Anti-Trastuzumab Antibody (15H2), mAb, Mouse (A02033) to Trastuzumab was studied using indirect ELISA. No cross-reactivity was noted with human IgG, 10% free human serum, and other antibody drugs shown in the figure.

Note: 10% free human serum refers to T3/T4 Free human serum, lipid stripped.

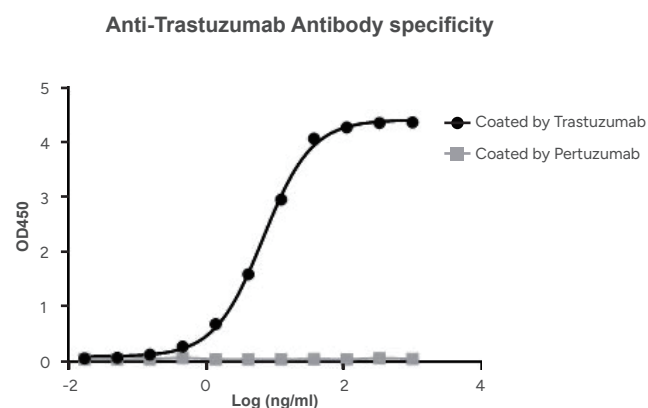


Figure 4. High specificity of Anti-Trastuzumab to Trastuzumab.

The binding specificity of Anti-Trastuzumab Antibody (15H2), mAb, Mouse (A02033) to Trastuzumab was studied using indirect ELISA. No cross-reactivity with Pertuzumab was observed.

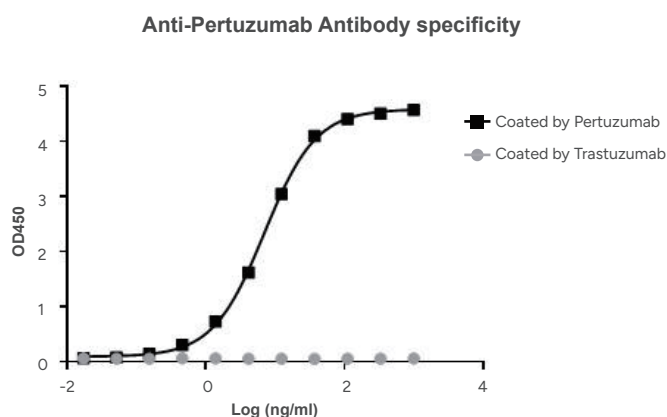


Figure 5. High specificity of Anti-Pertuzumab to Pertuzumab.

The binding specificity of Anti-Pertuzumab Antibody (1A3), mAb, Mouse (A02150) to Pertuzumab was studied using indirect ELISA. No cross-reactivity with Trastuzumab was observed.

帕妥珠单抗、曲妥珠单抗和透明质酸酶 (pertuzumab, trastuzumab, and hyaluronidase-zzxf) 被批准与多西他赛或其他化疗药物一起联用用于治疗 HER2 阳性的乳腺癌。它被用作成人局部晚期、炎症性或早期乳腺癌的新辅助疗法（在手术前缩小肿瘤）。因此，对于接受 Pertuzumab 和 Trastuzumab 共同治疗的病人样本，抗 Pertuzumab 或抗 Trastuzumab 抗体的特异性在 PK 检测中很重要。

高亲和力

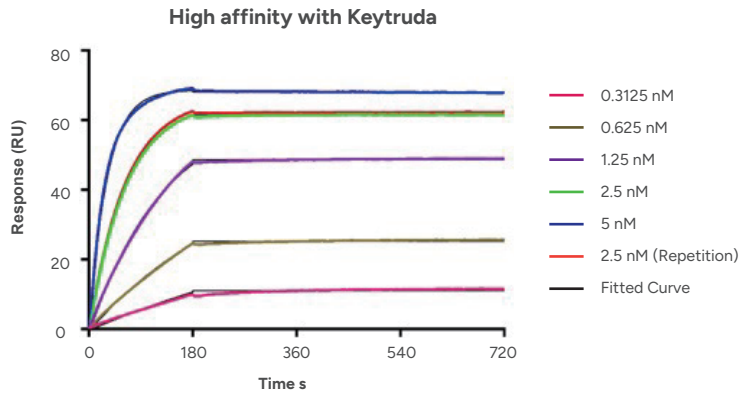


Figure 6. High affinity of Anti-Pembrolizumab antibody with Keytruda.

The affinity of MonoRab™ Anti-Pembrolizumab Antibody (90G12F8), mAb, Rabbit (Cat.No. A01853) towards Keytruda was measured by SPR method; $K_d < 10^{-12}$ M.

高稳定性

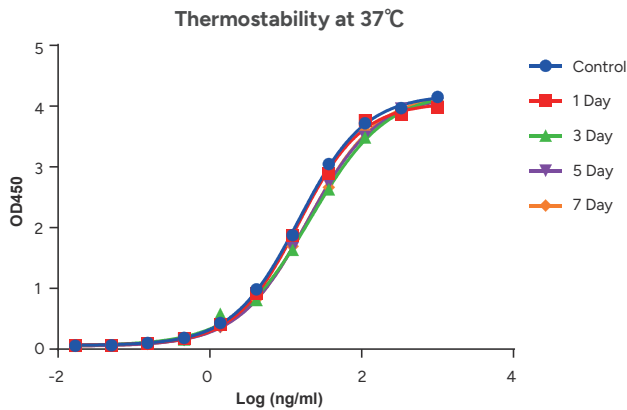


Figure 7. High thermal stability of A02033.

Anti-Trastuzumab Antibody (15H2), mAb, Mouse (A02033, 0.5 mg/mL) was aliquoted and placed at 37°C for different time periods (1, 3, 5, 7 days), along with the control placed at 4°C. No significant loss of binding activity was observed. Trastuzumab (1 µg/mL) was used as coating antigen.

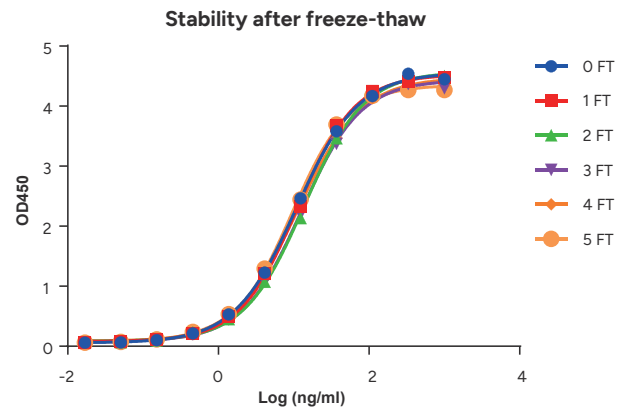


Figure 8. High freeze-thaw stability of A02033.

Anti-Trastuzumab Antibody (15H2), mAb, Mouse (A02033, 0.5 mg/mL) were subjected to the indicated number of freeze-thaw cycles (FT). No significant loss of activity was observed.

产品列表

金斯瑞开发了 100 多种抗独特型抗体产品，涵盖 28 个热门上市单抗药物。

PK研究抗体对

金斯瑞为您的药代动力学研究开发了多种即用型抗独特型抗体对。当您的研究需要极高的灵敏度时，MonoRab™ 兔单克隆抗体系列是皮摩尔级灵敏度免疫分析的完美选择。此外，金斯瑞还可为检测抗体提供定制标记服务。

药物靶点	Anti-ID 抗体	抗体类型	捕获抗体	检测抗体-非标记	检测抗体-Biotin 标记
CD20	Anti-Obinutuzumab	mAb, Mouse	A01945-40	A01946-40	A01947-40
		mAb, Rabbit	A01966-40	A01967-40	
	Anti-Rituximab	mAb, Mouse	A01969-40	A01970-40	A01971-40
		mAb, Rabbit	A01942-40	A01943-40	A01944-40
CD38	Anti-Daratumumab	mAb, Mouse	A01996-40	A01997-40	
Complement Protein C5	Anti-Eculizumab	mAb, Mouse	A02115-40	A02116-40	
CTLA-4	Anti-Ipilimumab	mAb, Mouse	A01859-40	A01961-40	A01858-40
EGF Receptor	Anti-Cetuximab	mAb, Mouse	A01939-40	A01938-40	
		mAb, Rabbit	A01991-40	A01992-40	
	Anti-Panitumumab	mAb, Mouse	A02100-40	A02099-40	
HER2	Anti-Pertuzumab	mAb, Mouse	A02150-40	A02151-40	
	Anti-Trastuzumab	mAb, Mouse	A02032-40	A02033-40	
Human IgE	Anti-Omalizumab	mAb, Mouse	A02095-40	A02094-40	
IL-12 & IL-23	Anti-Ustekinumab	mAb, Mouse	A02118-40	A02117-40	

药物靶点	Anti-ID 抗体	抗体类型	捕获抗体	检测抗体-非标记	检测抗体-Biotin 标记
IL-17A	Anti-Secukinumab	mAb, Mouse	A02152-40	A02153-40	
IL-4R α	Anti-Dupilumab	mAb, Mouse	A02098-40	A02097-40	
IL-6 Receptor	Anti-Tocilizumab	mAb, Mouse	A01978-40	A01979-40	A01980-40
	Anti-Sarilumab	mAb, Mouse	A02042-40	A02043-40	
PD-1	Anti-Nivolumab	mAb, Mouse	A01847-40	A01965-40	A01848-40
		mAb, Rabbit		A01988-40	A01989-40
	Anti-Pembrolizumab	mAb, Rabbit	A02008-40	A02007-40	
PD-L1	Anti-Atezolizumab	mAb, Mouse	A01948-40	A01949-40	A01950-40
		mAb, Rabbit	A01984-40	A01985-40	A01986-40
	Anti-Avelumab	mAb, Mouse	A02121-40	A02120-40	
RANK Ligand	Anti-Denosumab	mAb, Mouse	A02101-40	A02102-40	
RSV F	Anti-Palivizumab	mAb, Mouse	A02112-40	A02111-40	
TNF alpha	Anti-Adalimumab	mAb, Mouse	A01954-40	A01955-40	A01956-40
		mAb, Rabbit	A01921-40	A01922-40	
	Anti-Etanercept	mAb, Mouse	A02114-40	A02113-40	
	Anti-Infliximab	mAb, Mouse	A02040-40	A02041-40	
VEGF-A	Anti-Bevacizumab	mAb, Mouse	A01975-40	A01976-40	A01977-40
		mAb, Rabbit	A01895-40	A01962-40	A01896-40
		/	A02185-40 (mAb, Mouse)	A01962-40 (mAb, Rabbit)	A01896-40 (mAb, Rabbit)
	Anti-Ranibizumab	mAb, Mouse	A02035-40	A02036-40	

免疫原性分析抗体

多克隆抗体能够识别多个表位，因此可以在体内高度模拟抗药物抗体。这使得多克隆抗体成为免疫原性分析的理想阳性对照。

药物靶点	Anti-ID 抗体	抗体类型	产品编号
CD20	Anti-Obinutuzumab	pAb, Rabbit	A01933-40
	Anti-Rituximab	pAb, Rabbit	A01918-40
EGF Receptor	Anti-Panitumumab	pAb, Rabbit	A02063-40
IL-12 & IL-23	Anti-Ustekinumab	pAb, Rabbit	A02123-40
IL-6 Receptor	Anti-Tocilizumab	pAb, Rabbit	A01932-40
	Anti-Sarilumab	pAb, Rabbit	A02122-40
PD-1	Anti-Nivolumab	pAb, Rabbit	A01931-40
	Anti-Pembrolizumab	pAb, Rabbit	A01846-40
RSV F	Anti-Palivizumab	pAb, Rabbit	A02064-40
TNF alpha	Anti-Adalimumab	pAb, Rabbit	A01886-40
	Anti-Golimumab	pAb, Rabbit	A02093-40
	Anti-Infliximab	pAb, Rabbit	A02061-40
VEGF-A	Anti-Bevacizumab	pAb, Rabbit	A01887-40
	Anti-Ranibizumab	pAb, Rabbit	A02037-40

地址：江苏省南京市江宁科学园雍熙路28号

网址：www.genscript.com.cn

邮箱：product@genscript.com.cn

咨询电话：400-025-8686分机5810

售后电话：400-025-8686分机6707